

4

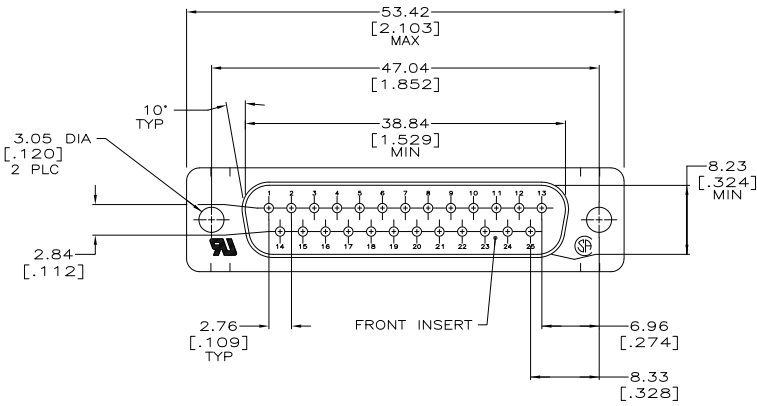
3

2

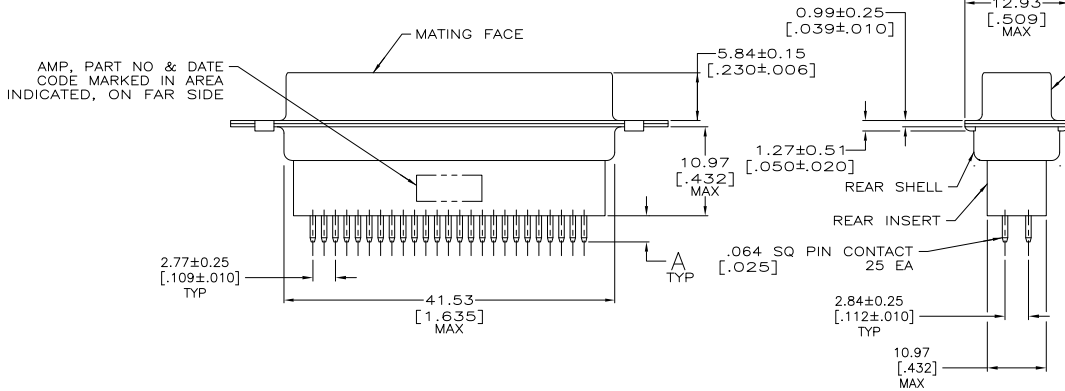
1

THIS DRAWING IS UNPUBLISHED. RELEASED FOR PUBLICATION  
 BY TYCO ELECTRONICS CORPORATION. ALL RIGHTS RESERVED.

| LOC | DIST | REVISIONS |     |                           |           |     |     |
|-----|------|-----------|-----|---------------------------|-----------|-----|-----|
| GP  | 00   | F         | LNK | DESCRIPTION               | DATE      | MIN | APD |
|     |      | Z         |     | REVISED PER ECO-10-000073 | 26JAN2010 | CJV | SB  |



- △ MOLDED PARTS: GLASS FILLED NYLON, UL 94V-0 RATED, BLACK.  
SHELLS: CARBON STEEL.  
CONTACTS: BRASS.
- △ SHELLS: 5.08µm [.000200] MIN ZINC WITH YELLOW CHROMATE COATING.  
CONTACTS: GOLD PLATED FOR LENGTH OF 3.81 [.150] MIN FROM MATING END,  
MIN GOLD (SEE TABLE) IN MATED AREA. 2.54µm [.000100] MIN TIN-LEAD  
ON SOLDER END, ALL OVER 1.27µm [.000050] MIN NICKEL.
- 3. NOTE DELETED.
- 4. NOTE DELETED.
- 5. NOTE DELETED.
- △ NOTE DELETED.
- △ OBSOLETE PART NUMBER.
- △ SHELLS: 5.08µm [.000200] MIN ZINC WITH YELLOW CHROMATE COATING.  
CONTACTS: GOLD PLATED FOR LENGTH OF 3.81 [.150] MIN FROM MATING END,  
0.76µm [.000030] MIN GOLD IN MATED AREA,  
2.54µm [.000100] MIN TIN-LEAD ON SOLDER END, BOTH OVER  
1.27µm [.000050] MIN NICKEL.  
OR  
GOLD FLASH OVER PALLADIUM-NICKEL PLATED FOR LENGTH OF  
3.81 [.150] MIN FROM MATING END,  
0.76µm [.000030] MIN TOTAL IN MATED AREA,  
2.54µm [.000100] MIN TIN-LEAD ON SOLDER END, BOTH OVER  
1.27µm [.000050] MIN NICKEL.



|                   |   |                 |   |          |
|-------------------|---|-----------------|---|----------|
|                   | - | -               | △ | 205737-9 |
| SUPSD<br>205737-7 | △ | 4.78<br>[.188]  |   | 205737-8 |
|                   |   | 4.78<br>[.188]  |   | 205737-7 |
| SUPSD<br>205737-7 | △ | 16.54<br>[.651] |   | 205737-6 |
|                   | - | -               | △ | 205737-5 |
| SUPSD<br>205737-7 | △ | 10.85<br>[.427] |   | 205737-4 |
| SUPSD<br>205737-7 | △ | 10.85<br>[.427] |   | 205737-3 |
| SUPSD<br>205737-7 | △ | 3.18<br>[.125]  |   | 205737-2 |
| SUPSD<br>205737-7 | △ | 3.18<br>[.125]  |   | 205737-1 |

| GOLD FINISH | A | PART NUMBER |
|-------------|---|-------------|
|-------------|---|-------------|

THIS DRAWING IS A CONTROLLED DOCUMENT.

|                         |                             |   |                  |
|-------------------------|-----------------------------|---|------------------|
| DWG: J. POLIGNONE       | DATE: 07FEB07               | Tyco Electronics Corporation<br>Harrisburg, PA 17105-3608 |                  |
| CHK: F. BRIANT          | DATE: 07FEB07               | Tyco Electronics  |                  |
| DWG: F. BRIANT          | DATE: 07FEB07               | PLUG ASSY, SIZE 3,<br>25 POS, VERTICAL,                   |                  |
| PRODUCT SPEC: 108-40025 | APPLICATION SPEC: 114-40013 | SIZE: A2  | DATE CODE: 00779 |
| MATERIAL: △             | FINISH: △△                  | SCALE: NTS  | SHEET: 1 of 1    |
| CUSTOMER DRAWING        |                             | REV: 7  |                  |

AMP 1471-9 REV 31MM2000

205737

A