

4

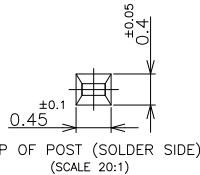
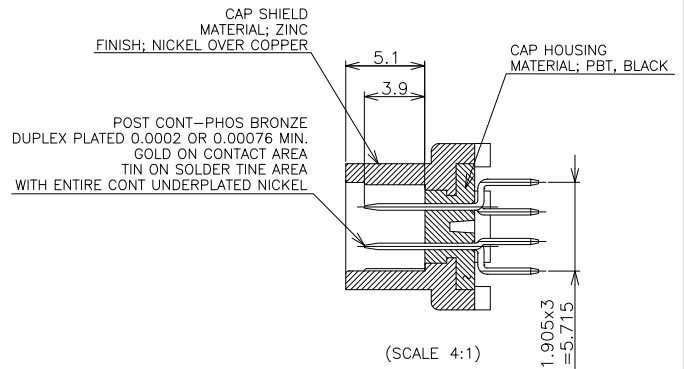
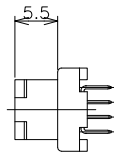
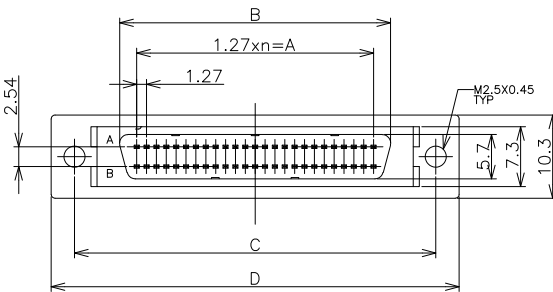
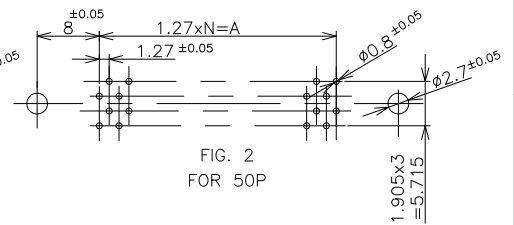
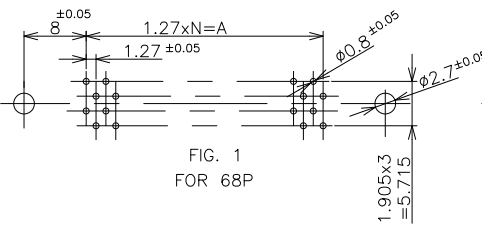
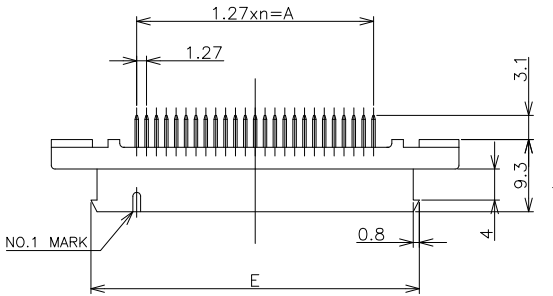
3

2

1

THIS DRAWING IS UNPUBLISHED. RELEASED FOR PUBLICATION MAY, 1989.
 © COPYRIGHT 1989 By - ALL RIGHTS RESERVED.

LOC	DIST	REVISIONS			
P	LTR	DESCRIPTION	DATE	DWN	APVD
B2		REVISED PER ECO-11-005033	25MAR11	RK	HMR



- P.C BOARD HOLE LAY-OUT AS SHOWN FIG.1 & 2.
- USED SCREW; M2.5x0.45 PANHEAD SCREW.

GENERAL TOLERANCE	68	33	41.91	46.28	57.9	63.9	53.71	0.00076	2-5174339-5
10 ≥ : ±0.2	50	24	30.48	34.85	46.5	52.5	42.28	MIN	2-5174339-4
30 ≥ > 10: ±0.25	68	33	41.91	46.28	57.9	63.9	53.71	0.0002	5174339-5
100 ≥ > 30: ±0.3	50	24	30.48	34.85	46.5	52.5	42.28	MIN	5174339-4
ANGLES: ±3'	POS	N	A	B	C	D	E	GOLD THK	PART NO.

THIS DRAWING IS A CONTROLLED DOCUMENT.		DWN Roy hao 17Aug04	 TE Connectivity
DIMENSIONS: mm	TOLERANCES UNLESS OTHERWISE SPECIFIED:	CHK Steven Yao 17Aug04	
		APVD J.Enomoto 17Aug04	
		PRODUCT SPEC	NAME
		108-60037-1	CAP HEADER (VERTICAL/M2.5)
		APPLICATION SPEC	AMPLIMITE .050 SERIES II CONN.
		WEIGHT	TYPE B
MATERIAL SEE ABOVE	FINISH SEE ABOVE	SIZE A3	CAGE CODE 00779
		DRAWING NO	5174339
		CUSTOMER DRAWING	RESTRICTED TO
		SCALE 1:1	SHEET 1 OF 1
			REV B2