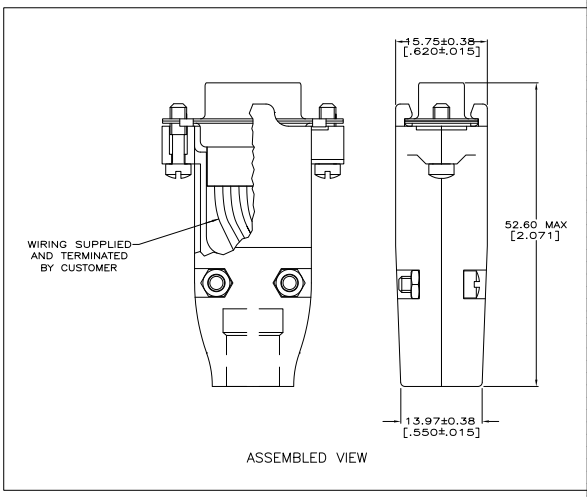
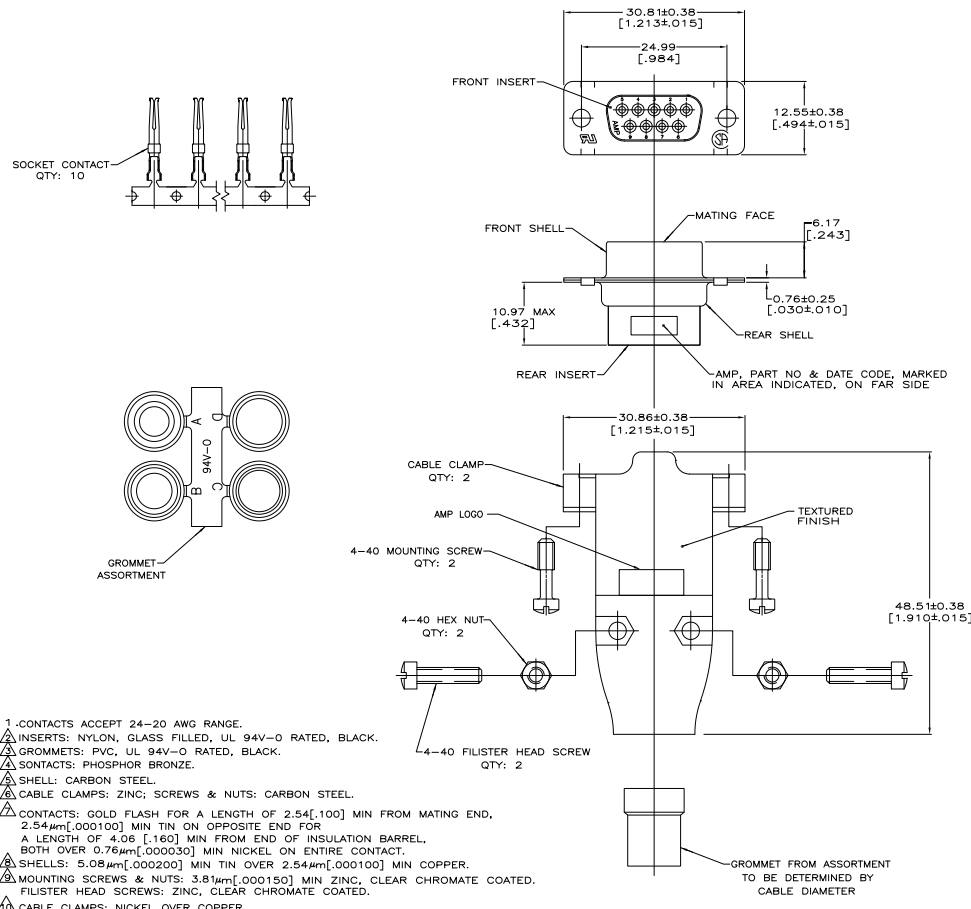


THIS DRAWING IS UNPUBLISHED  
 ALL RIGHTS RESERVED

REV	DATE	DESCRIPTION	BY	CHK
00				
B1		REVISED PER EDD-11-004835	11MMR11	RK HMR



- 1. CONTACTS ACCEPT 24-20 AWG RANGE.
- △ INSERTS: NYLON, GLASS FILLED, UL 94V-0 RATED, BLACK.
- △ GROMMETS: PVC, UL 94V-0 RATED, BLACK.
- △ CONTACTS: PHOSPHOR BRONZE.
- △ SHELL: CARBON STEEL.
- △ CABLE CLAMPS: ZINC; SCREWS & NUTS: CARBON STEEL.
- △ CONTACTS: GOLD FLASH FOR A LENGTH OF 2.54[.100] MIN FROM MATING END, 2.54µm[.000100] MIN TIN ON OPPOSITE END FOR A LENGTH OF 4.06 [0.160] MIN FROM END OF INSULATION BARREL, BOTH OVER 0.76µm[.000030] MIN NICKEL ON ENTIRE CONTACT.
- △ SHELLS: 5.08µm[.000200] MIN TIN OVER 2.54µm[.000100] MIN COPPER.
- △ MOUNTING SCREWS & NUTS: 3.81µm[.000150] MIN ZINC, CLEAR CHROMATE COATED. FILISTER HEAD SCREWS: ZINC, CLEAR CHROMATE COATED.
- △ CABLE CLAMPS: NICKEL OVER COPPER.

749806-7  
PART NUMBER

THIS DRAWING IS A CONTROLLED DOCUMENT.		REV	DATE	EPC		TE Connectivity	
UNFINISHED	FINISHED	REV	DATE	REV	DATE	RECEPTACLE KIT, UNASSEMBLED, SIZE 1, 9 POSN, METAL SHELL, AMPULITE, HSP-20	
108-40005	114-40030	REV	DATE	REV	DATE	100779	749806-7
CUSTOMER DRAWING		REV	DATE	REV	DATE	2:1	1 of 1