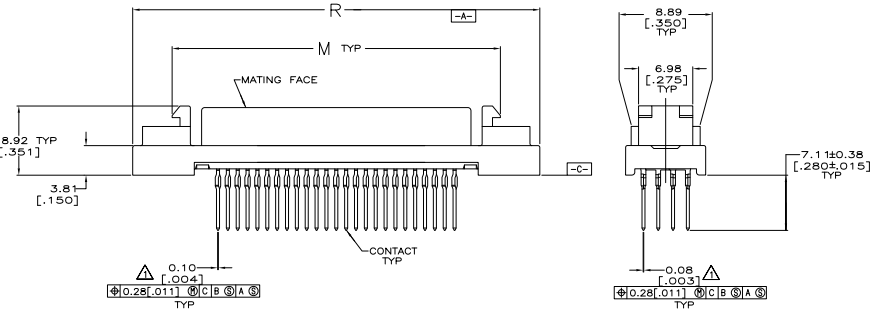
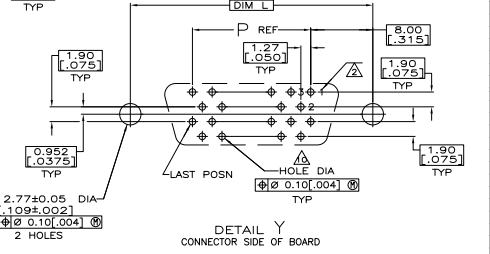
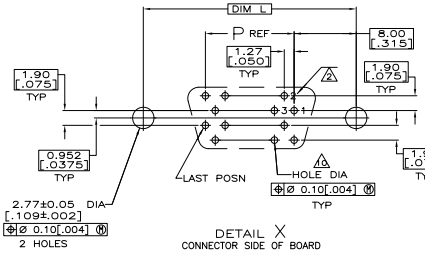
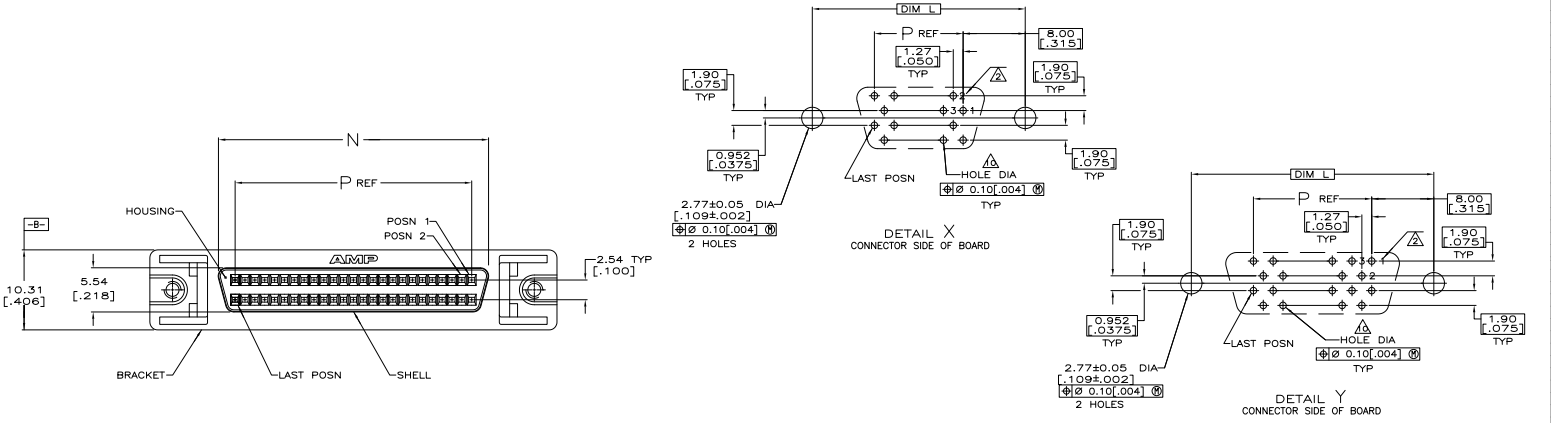


REV	DATE	DESCRIPTION	BY	APP'D
01		REVISED PER ECO-05-03847	BM	SS
02		REVISED PER ECO-10-00443	BRUNNIG	KK AEC



- ▲ POSITION TOLERANCE APPLIES AT CONTACT TIP.
- ▲ POSITION NUMBERS SHOWN FOR REFERENCE ONLY.
- ▲ POLYPHTHALAMIDE, BLACK, UL 94-V0 RATED.
- ▲ CARBON STEEL PER ASTM A109.
- ▲ PHOSPHOR BRONZE PER QQ-B-750.
- ▲ ZINC
- ▲ 5.08μm[0.000200] MIN NICKEL OVER 1.27μm[0.000050] MIN COPPER.
- ▲ 3.81μm[0.000150] MIN NICKEL OVER 5.08μm[0.000200] MIN COPPER.
- ▲ 0.76μm[0.000030] MIN GOLD FOR A LENGTH OF 0.64[0.025]MIN, 0.13[0.005] MAX FROM MATING END, 1.27μm[0.000050] MIN TIN-LEAD ON OPPOSITE END FOR A LENGTH OF 7.49 [0.295] MIN, BOTH OVER 1.27μm[0.000050] MIN NICKEL.
- ▲ PC BOARD HOLE RECOMMENDATIONS:
 - A. HOLES SHOULD BE DRILLED WITH A 0.701[0.0276] DRILL.
 - B. PC BOARD PLATING TO BE 7.62μm[0.000300] MIN TIN-LEAD OVER 0.025[0.0010]-0.038[0.0015] COPPER.
 - C. RECOMMENDED HOLE SIZE AFTER TIN-LEAD PLATING IS 0.56-0.66[0.022-0.026].
- ▲ OBSOLETE PART NUMBER.
- ▲ OBSOLETE PART NUMBER: OBSOLETE CIS STREAMLING PER D.RENAUD/D.SINISI

	96.90 [3.815]	74.93 [2.950]	79.15 [3.118]	86.74 [3.415]	90.93 [3.580]	45.47 [1.790]	120	4-786656-0
PER DETAIL X	84.20 [3.315]	62.23 [2.450]	66.46 [2.616]	74.04 [2.915]	78.23 [3.080]	39.12 [1.540]	100	786656-9
PER DETAIL X	63.88 [2.515]	41.91 [1.650]	46.13 [1.816]	53.72 [2.115]	57.91 [2.280]	28.96 [1.140]	68	786656-7
PER DETAIL Y	62.45 [2.065]	30.48 [1.200]	34.70 [1.366]	42.29 [1.665]	46.48 [1.830]	23.24 [0.915]	50	786656-5
PER DETAIL Y	37.21 [1.465]	15.24 [0.600]	19.46 [0.766]	27.05 [1.065]	31.24 [1.230]	15.62 [0.615]	26	786656-2
PER DETAIL X	33.40 [1.315]	11.43 [0.450]	15.65 [0.616]	23.24 [0.915]	27.43 [1.080]	13.72 [0.540]	20	786656-1
RECOMMENDED PCB MFG DIMENSIONS	R	P	N	M	L	K	NO OF POSN	PART NUMBER

THIS DRAWING IS A CONTROLLED DOCUMENT. DATE: 10/13/08

DESIGNED BY: STONE DATE: 10/13/08

DESIGNED BY: STONE DATE: 10/13/08

PROJECT NAME: 108-1228

REV: 114-40029

DATE: 11/13/08

REVISIONS: RECEPTACLE ASSEMBLY, SHELDED, VERTICAL, RALLED, ACTION PIN FOR 125 TO 2000 THICK BO.

DATE: 11/13/08

BY: 100779

CHECKED BY: 786656

CUSTOMER DRAWING

SCALE: 4:1

SHEET: 1 OF 1

REV: G2