

4

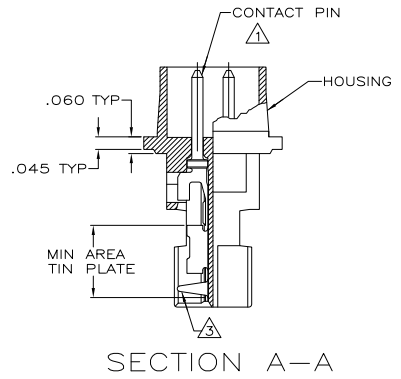
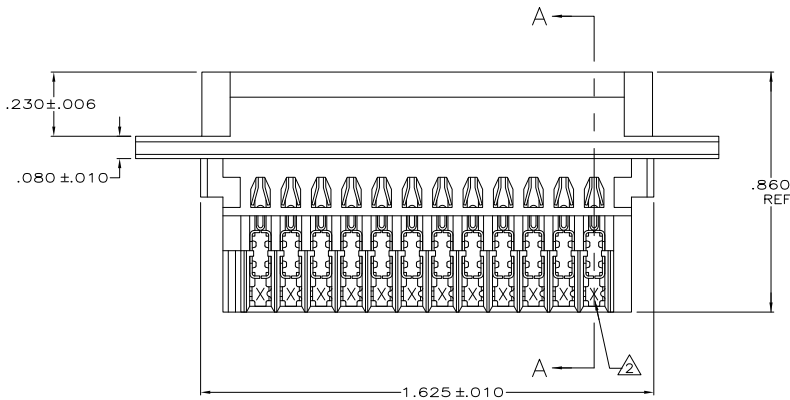
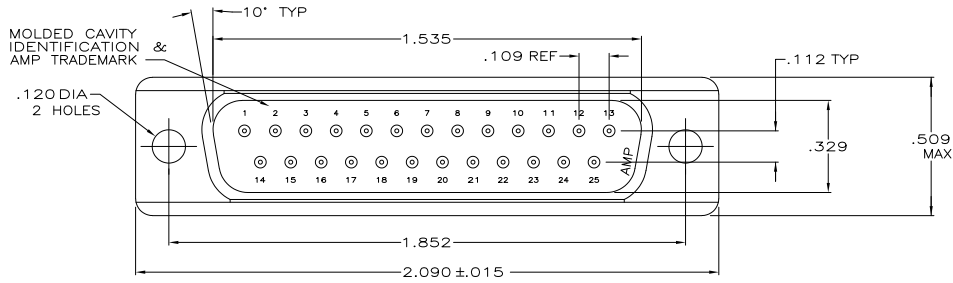
3

2

1

THIS DRAWING IS UNPUBLISHED. RELEASED FOR PUBLICATION  
 © COPYRIGHT - By - ALL RIGHTS RESERVED.

LOC		DST		REVISIONS			
P	LR	DESCRIPTION	DATE	BY	APPD		
GP	00	T1	REVISED PER ECO-11-004835	11MAR11	RK	HMR	



THIS DRAWING IS A CONTROLLED DOCUMENT.		DWG: L VARELA - DOCKS 11-15-04 CHK: GERACE 11-15-04 APD: M. WALMSLEY 11-15-04 NAME: M. WALMSLEY PRODUCT SPEC: 108-40011 APPLICATION SPEC: 114-40002 REVISION: - CUSTOMER DRAWING	DWG: L VARELA - DOCKS 11-15-04 CHK: GERACE 11-15-04 APD: M. WALMSLEY 11-15-04 NAME: M. WALMSLEY PRODUCT SPEC: 108-40011 APPLICATION SPEC: 114-40002 REVISION: - CUSTOMER DRAWING	<b>TE</b> TE Connectivity PLUG ASSEMBLY, SIZE 3, 25 POSITION, AMPLITE	SIZE: A2 CASE CODE: 00779 DRAWING NO: C=745211 SCALE: 4:1 SHEET: 1 of 2 REV: T1	RESTRICTED TO
--	--	---	---	--	--	---------------

1471-9 (3/11)

745211

A

4

3

2

1

THIS DRAWING IS UNPUBLISHED. RELEASED FOR PUBLICATION  
 © COPYRIGHT - By - ALL RIGHTS RESERVED.

LOC	DIST	REVISIONS					
GP	00	P	LTR	DESCRIPTION	DATE	MIN	APD
-	-	-	-	SEE SHEET 1	-	-	-

- ⚠ HOUSING FULLY LOADED WITH CONTACTS.
- ⚠ NUMBER ON CONTACT INDICATES WIRE RANGE.
- ⚠ CONTACT INSULATION RANGE: .060 MAXIMUM O.D.
- ⚠ CONTACTS GOLD PLATED FOR A LENGTH OF .150 MIN FROM MATING END, .000030 MIN GOLD IN MATED AREA, .000100-.000200 BRIGHT TIN OR BRIGHT TIN-LEAD IN AREA SHOWN, ALL OVER .000050 MIN NICKEL UNDERPLATE ON ENTIRE CONTACT.  
OR  
CONTACTS GOLD PLATED FOR A LENGTH OF .150 MIN FROM MATING END, GOLD FLASH OVER .000030 MIN PALLADIUM-NICKEL IN MATED AREA, .000100-.000200 BRIGHT TIN OR BRIGHT TIN-LEAD IN AREA SHOWN, ALL OVER .000050 MIN NICKEL UNDERPLATE ON ENTIRE CONTACT.
- ⚠ CONTACTS PLATED GOLD PLATED FOR LENGTH OF .150 MIN FROM MATING END, GOLD FLASH IN MATED AREA .000100-.000200 BRIGHT TIN IN TIN-LEAD AREA SHOWN. .000030 NICKEL UNDERPLATE ON ENTIRE CONTACT.
- ⚠ CONTACTS GOLD PLATED FOR A LENGTH OF .150 MIN FROM MATING END, .000030 MIN GOLD IN MATED AREA, .000100-.000200 MATTE TIN IN AREA SHOWN, ALL OVER .000050 MIN NICKEL UNDERPLATE ON ENTIRE CONTACT.  
OR  
CONTACTS GOLD PLATED FOR A LENGTH OF .150 MIN FROM MATING END, GOLD FLASH OVER PALLADIUM-NICKEL, .000030 MIN TOTAL IN MATED AREA, .000100-.000200 MATTE TIN IN AREA SHOWN, ALL OVER .000050 MIN NICKEL UNDERPLATE ON ENTIRE CONTACT.
- ⚠ CONTACTS PLATED GOLD FLASH FOR A LENGTH OF .150 MIN FROM MATING END, .000100-.000200 MATTE TIN IN AREA SHOWN, ALL OVER .000030 MIN NICKEL UNDERPLATE ON ENTIRE CONTACT.
- ⚠ HOUSING: BLACK THERMOPLASTIC 94V-0 RATED.  
CONTACTS: PHOSPHOR BRONZE.

OBSOLETE	⚠	3	#20-22	1-745211-0
	⚠	1	#26-30	745211-9
	⚠	2	#22-26	745211-8
	⚠	2	#22-26	745211-7
		3	#20-22	745211-6
OBSOLETE	⚠	2	#22-26	745211-5
OBSOLETE		1	#26-30	745211-4
OBSOLETE	⚠	3	#20-22	745211-3
OBSOLETE		2	#22-26	745211-2
OBSOLETE		1	#26-30	745211-1
	FINISH	⚠	AWG WIRE RANGE	PART NUMBER

THIS DRAWING IS A CONTROLLED DOCUMENT.

INCHES	0 PLC ± .005 1 PLC ± .005 2 PLC ± .005 3 PLC ± .005 4 PLC ± .005	OTHER DIMENSIONS UNLESS OTHERWISE SPECIFIED	DATE: 11-15-04 BY: L VARELA - DOCKS CHK: J GERACE DATE: 11-15-04 APP: M. WALMSLEY NAME: M. WALMSLEY PRODUCT SPEC: 108-40011 APPLICATION SPEC: 114-40002 REVISION: -	DATE: 11-15-04 BY: L VARELA - DOCKS CHK: J GERACE DATE: 11-15-04 APP: M. WALMSLEY NAME: M. WALMSLEY PRODUCT SPEC: 108-40011 APPLICATION SPEC: 114-40002 REVISION: -	SIZE: A2 CAGE CODE: 00779 DRAWING NO: C=745211	RESTRICTED TO: -
MATERIAL	SEE TABLE	FINISH	CUSTOMER DRAWING	SCALE: 4:1	SHEET: 2 of 2	REV: T1

TE Connectivity  
 PLUG ASSEMBLY, SIZE 3, 25 POSITION, AMPLITE