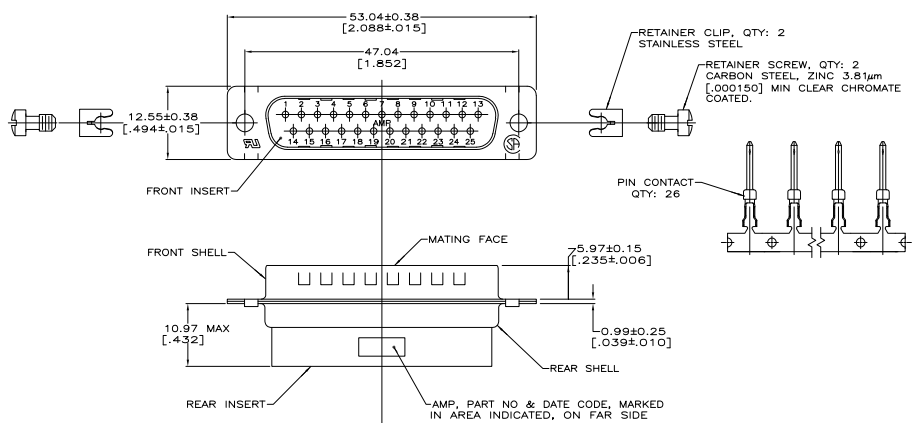
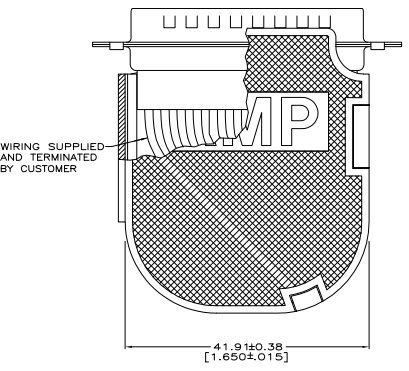
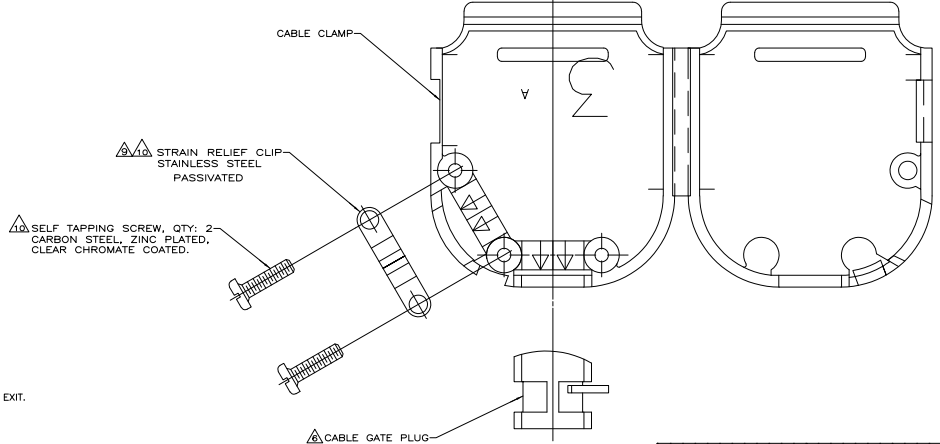


THIS DRAWING IS UNPUBLISHED. REVISIONS REQUIRED FOR FABRICATION. ALL RIGHTS RESERVED.

REV	DATE	DESCRIPTION	BY	CHK	APP
00					
A		REVISED PER EC 0513-0366-05			



- CONTACTS ACCEPT 20-24 AWG RANGE.
- INSERTS: NYLON, GLASS FILLED, UL 94V-0 RATED, BLACK.
- CABLE CLAMPS: POLYPROPYLENE, BLACK.
- CONTACTS: BRASS.
- SHELLS: CARBON STEEL.
- CABLE GATE PLUG TO BE PLACED IN CABLE EXIT NOT BEING USED.
- CONTACTS: GOLD FLASH FOR A LENGTH OF 3.8[.150] MIN FROM MATING END, 2.54µm[.000100] MIN TIN ON OPPOSITE END FOR A LENGTH OF 4.06 [.160] MIN FROM END OF INSULATION BARREL, BOTH OVER 0.76µm[.000030] MIN NICKEL ON ENTIRE CONTACT.
- SHELLS: 5.08µm[.000200] MIN TIN OVER 2.54µm[.000100] MIN COPPER.
- STRAIN RELIEF CLIP CAN BE REVERSED FOR PROPER INSTALLATION, DEPENDING ON SIZE OF CABLE DIAMETER.
- STRAIN RELIEF CLIP AND SELF TAPPING SCREWS MAY BE USED AT EITHER CABLE EXIT.
- CABLE DIAMETER RANGE = 4.58-11.68 [.180-.460].



THIS DRAWING IS A CONTROLLED DOCUMENT.		DATE	BY	CHK	APP
DATE	BY	DATE	BY	CHK	APP
114-40030	A1	00779	G	749808-7	

DESCRIPTION	QUANTITY	UNIT	REMARKS
108-40005	1	PCB	PLUG KIT, UNASSEMBLED, SIZE 3, 25 POSITION, ANISOLATE, HSP-20
114-40030	1	PCB	

REV	DATE	DESCRIPTION	BY	CHK	APP
00					
A		REVISED PER EC 0513-0366-05			