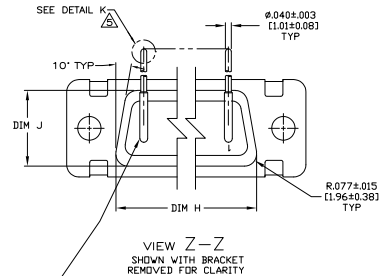
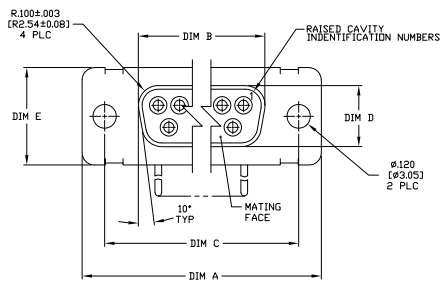


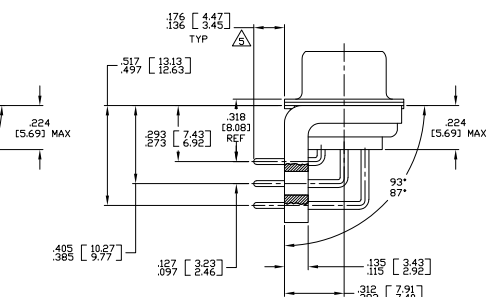
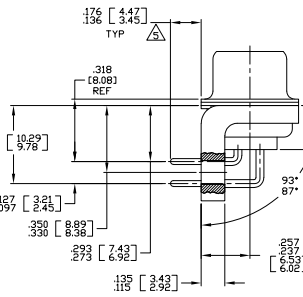
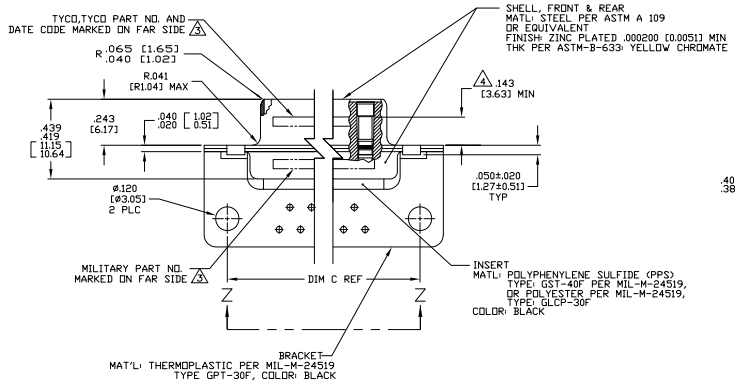
THIS DRAWING IS UNCLASSIFIED  
 UNLESS INDICATED OTHERWISE  
 © COPYRIGHT 1984 BY THE ELECTRONIC COMPONENTS ASSOCIATION

REV	DATE	DESCRIPTION	BY	CHKD
1	1-22-86	CT	DM	



- 1. SEE SHEET 2 FOR RECOMMENDED P.C. BOARD LAYOUT. TRUE POSITION TOLERANCE FOR P.C. BOARD LAYOUT IS .010 (0.25) AT MAX MATERIAL CONDITION. SUGGESTED BOARD THICKNESS IS .062 (1.57). THE CONNECTORS DESCRIBED IN THIS DOCUMENT MEET THE REQUIREMENTS OF MIL-C-24308 AND MATE WITH ANY PLUG CONNECTOR WITH SAME INSERT ARRANGEMENT.
- 2. MARKED WITH .047 (1.19)±.062 (1.57) HIGH CHARACTERS. FAR SIDE REFERS TO THE WIDE SIDE OF THE KEYSTONE. NEAR SIDE REFERS TO THE NARROW SIDE OF THE KEYSTONE. IF THE REAR SHELL IS TOO SMALL FOR THE ENTIRE MILITARY PART NUMBER, MARKING SHALL BE LOCATED AS FOLLOWS:
  - A. M24308 IN FRONT SHELL, FAR SIDE.
  - B. SLASH SHEET AND DASH NUMBER ON REAR SHELL, FAR SIDE.
  - C. 'TYCD' AND DATE CODE ON FRONT SHELL, NEAR SIDE.
  - D. TYCD PART NUMBER ON REAR SHELL, NEAR SIDE.
- 3. IF THE FRONT SHELL IS TOO SMALL FOR 'TYCD', TYCD PART NUMBER AND DATE CODE, MARKING SHALL BE SPLIT AS FOLLOWS:
  - A. TYCD PART NUMBER ON REAR SHELL, NEAR SIDE.
  - B. 'TYCD' AND DATE CODE ON FRONT SHELL, NEAR SIDE.
  - C. MILITARY PART NUMBER ON REAR SHELL, FAR SIDE.
- 4. POINT OF ELECTRICAL ENGAGEMENT - AS MEASURED WITH A 0.390-0.393 (0.991-0.998) DIA SQUARE ENDED PIN.
- 5. SOLDER DIPPED PER J-STD-001 WITH Sn63 SOLDER PER J-STD-006 IN THE ENTIRE AREA OF DIMENSION SHOWN. (1757844-6 THRU -10 ONLY.)
- 6. MEETS SOLDERABILITY PER MIL-STD-202 METHOD 20B.

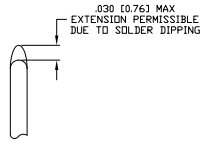
CONTACT (QTY = NO. OF POSN)  
 MATL: BRASS PER ASTM-B-16, OR BERYLLIUM COPPER PER ASTM-B-194  
 FINISH: GOLD PER ASTM-B-488, TYPE II, GRADE C, CLASS 127 IN CONTACT MATING AREA. .000010 (0.0003) MIN THK GOLD PER ASTM-B-488 OVER .000050 (0.0013) MIN THK NICKEL PER SAE-AMS-00-N-290 ON CONTACT BODY



SHELL SIZES 1 THRU 4 CONTACT CONFIGURATION

SHELL SIZE 5 CONTACT CONFIGURATION

DIM J	DIM H	DIM E	DIM D	DIM C	DIM B	DIM A	NO OF POSN	SHELL SIZE	MILITARY P/N ON CONNECTOR	TYCD P/N MARKED ON CONNECTOR	TYCD PART NO.
.544 [13.82]	2.188 [55.58]	.620 [15.75]	.428 [10.87]	2.411 [61.24]	2.069 [52.55]	2.650 [67.31]	MS18277-1	50	M24308/23-47	1757844-5	1-1757844-0
.524 [13.31]	2.188 [55.57]	.590 [14.99]	.418 [10.69]	2.401 [60.99]	2.059 [52.30]	2.620 [66.55]	MS18276-1	37	M24308/23-46	1757844-4	1757844-9
.432 [10.97]	2.282 [57.96]	.509 [12.93]	.316 [8.03]	2.505 [63.63]	2.164 [54.97]	2.744 [69.70]	MS18275-1	25	M24308/23-45	1757844-3	1757844-8
.412 [10.46]	2.282 [57.95]	.479 [12.17]	.306 [7.77]	2.495 [63.37]	2.154 [54.71]	2.714 [68.94]	MS18274-1	15	M24308/23-44	1757844-2	1757844-7
.432 [10.97]	1.635 [41.53]	.509 [12.93]	.316 [8.03]	1.857 [47.17]	1.516 [38.51]	2.103 [53.42]	MS18275-1	25	M24308/23-45	1757844-3	1757844-8
.412 [10.46]	1.615 [41.02]	.479 [12.17]	.306 [7.77]	1.847 [46.91]	1.506 [38.25]	2.073 [52.65]	MS18274-1	15	M24308/23-44	1757844-2	1757844-7
.432 [10.97]	1.093 [27.76]	.479 [12.17]	.306 [7.77]	1.307 [33.20]	.966 [24.54]	1.526 [38.76]	MS18275-1	25	M24308/23-45	1757844-3	1757844-8
.412 [10.46]	1.073 [27.25]	.479 [12.17]	.306 [7.77]	1.307 [33.20]	.966 [24.54]	1.526 [38.76]	MS18274-1	15	M24308/23-44	1757844-2	1757844-7
.432 [10.97]	.749 [19.02]	.479 [12.17]	.306 [7.77]	.979 [24.87]	.638 [16.21]	1.198 [30.43]	MS18273-1	9	M24308/23-43	1757844-1	1757844-6
.544 [13.82]	2.188 [55.58]	.620 [15.75]	.428 [10.87]	2.411 [61.24]	2.069 [52.55]	2.650 [67.31]	MS18277-1	50	M24308/23-47	1757844-5	1757844-10
.524 [13.31]	2.188 [55.07]	.590 [14.99]	.418 [10.69]	2.401 [60.99]	2.059 [52.30]	2.620 [66.55]	MS18276-1	37	M24308/23-46	1757844-4	1757844-9
.432 [10.97]	2.282 [57.96]	.509 [12.93]	.316 [8.03]	2.505 [63.63]	2.164 [54.97]	2.744 [69.70]	MS18275-1	25	M24308/23-45	1757844-3	1757844-8
.412 [10.46]	2.282 [57.95]	.479 [12.17]	.306 [7.77]	2.495 [63.37]	2.154 [54.71]	2.714 [68.94]	MS18274-1	15	M24308/23-44	1757844-2	1757844-7
.432 [10.97]	1.635 [41.53]	.509 [12.93]	.316 [8.03]	1.857 [47.17]	1.516 [38.51]	2.103 [53.42]	MS18275-1	25	M24308/23-45	1757844-3	1757844-8
.412 [10.46]	1.615 [41.02]	.479 [12.17]	.306 [7.77]	1.847 [46.91]	1.506 [38.25]	2.073 [52.65]	MS18274-1	15	M24308/23-44	1757844-2	1757844-7
.432 [10.97]	1.093 [27.76]	.479 [12.17]	.306 [7.77]	1.307 [33.20]	.966 [24.54]	1.526 [38.76]	MS18275-1	25	M24308/23-45	1757844-3	1757844-8
.412 [10.46]	1.073 [27.25]	.479 [12.17]	.306 [7.77]	1.307 [33.20]	.966 [24.54]	1.526 [38.76]	MS18274-1	15	M24308/23-44	1757844-2	1757844-7
.432 [10.97]	.749 [19.02]	.479 [12.17]	.306 [7.77]	.979 [24.87]	.638 [16.21]	1.198 [30.43]	MS18273-1	9	M24308/23-43	1757844-1	1757844-6



DETAIL K  
 SCALE 10:1  
 FOR 1757844-6 THRU -10 ONLY

THIS DRAWING IS A CONTROLLED DOCUMENT

REVISIONS: 1-23-84

DESIGNED BY: J. MILLER

DATE: 1-23-84

APPROVED BY: J. MILLER

DATE: 1-23-84

REVISIONS:

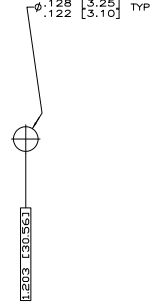
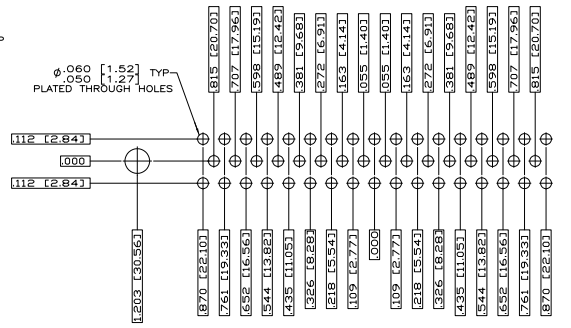
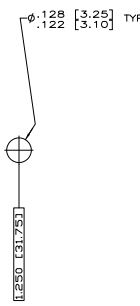
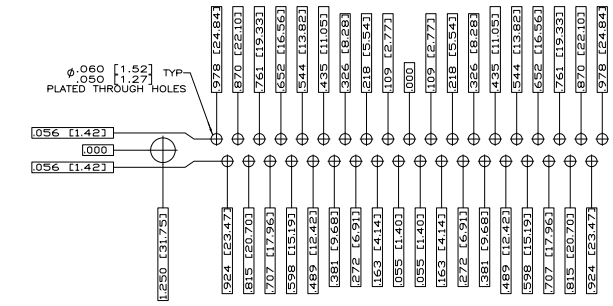
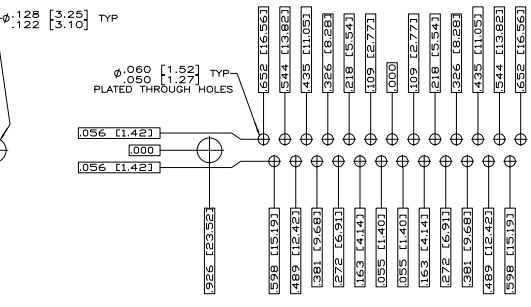
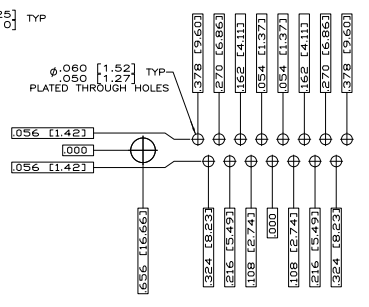
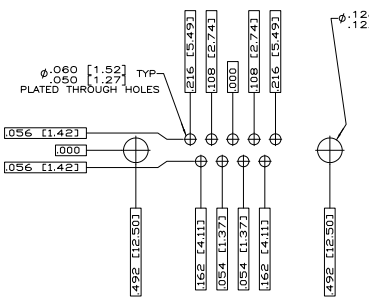
NO. DATE SIZE DRAWING NO. PART NO.

1 00779 G=1757844

CUSTOMER DRAWING

RECEPTACLE ASSEMBLY, AMPLE, RT ANGLE, SERIES 109, SIZE 1 THRU 5

REVISIONS TO: 1 2 0



THIS DRAWING IS A CONTROLLED DOCUMENT.		REV. C. THOMAS 2-27-74 REV. B. JOSEFMAN 2-27-74 REV. J. MILLER 2-27-74 REV. R. W. 2-27-74		<b>AMP</b> Tyco Electronics Corporation Harrisburg, PA 17105-3608	
DIMENSIONS: INCHES HOLES: .060 PLATED THROUGH HOLES: .060 CENTER TO CENTER: .56 SEE CALLOUTS	RECEPTACLE ASSEMBLY-AMPLIMITE RIGHT ANGLE SERIES 109 SIZE 1 THRU 5	SIZE: A1 DRAWING NO: 00779 CUSTOMER DRAWING: G=1757844	SHEET: 4.1 OF: 2	REVISIONS: 1 DATE: 2-27-74 BY: C. THOMAS CHECKED: B. JOSEFMAN APPROVED: J. MILLER	REVISIONS: 1 DATE: 2-27-74 BY: C. THOMAS CHECKED: B. JOSEFMAN APPROVED: J. MILLER