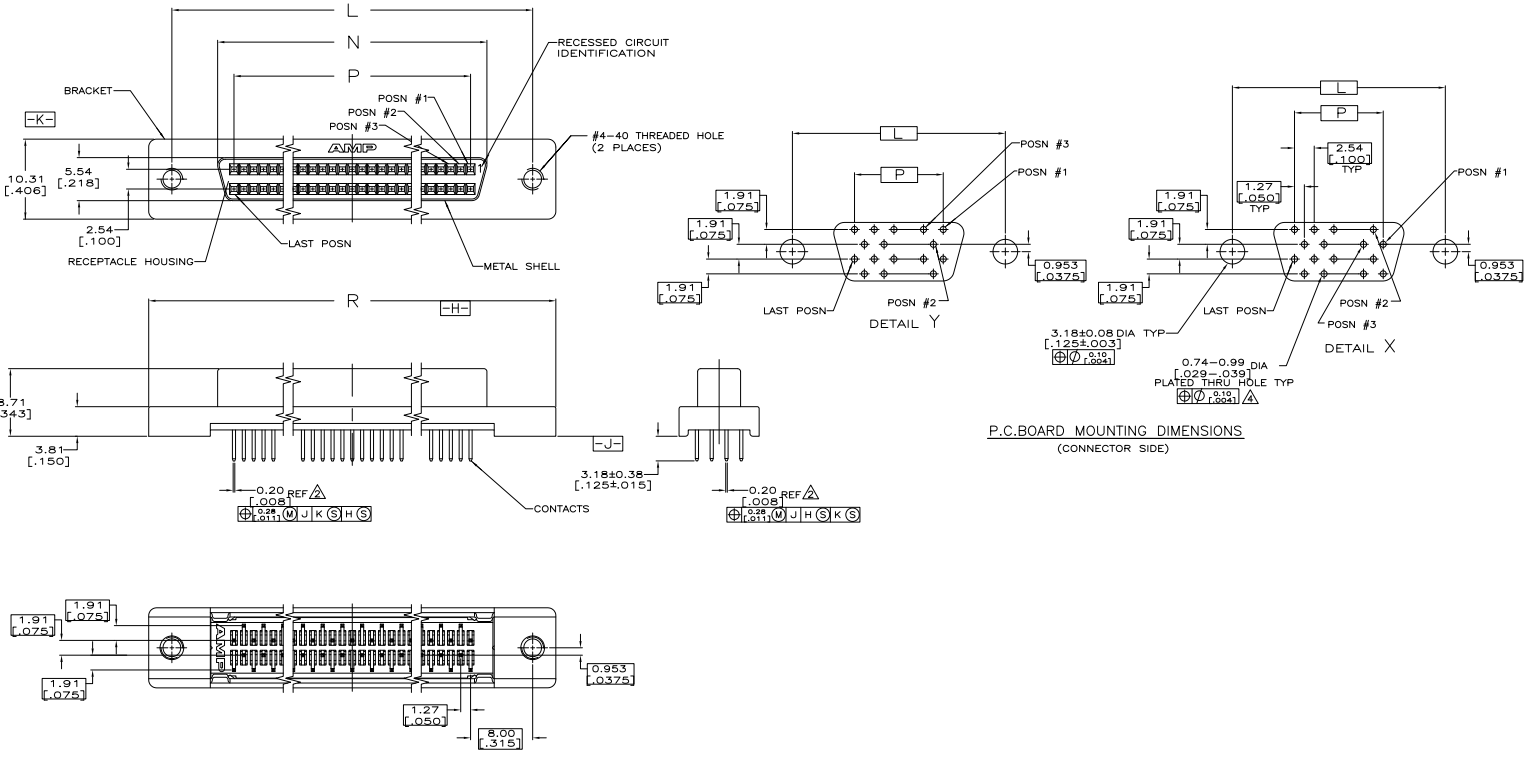


THIS DRAWING IS UNCLASSIFIED
 RECLASSIFIED FOR PROTECTION
 ALL RIGHTS RESERVED

REV	DATE	DESCRIPTION	BY	APP
00				
01		REVISED FOR ECO-02-013071	LAN2009	ZMR/SLB



P.C. BOARD MOUNTING DIMENSIONS
(CONNECTOR SIDE)

- △ FINISH:
 CONTACTS - EITHER 0.76µm [.000030] MIN THICK GOLD ON MATING END OR GOLD FLASH OVER PALLADIUM NICKEL 0.76µm [.000030] MIN THICK TOTAL ON MATING END. TIN-LEAD PLATED 3.05µm [.000120] MIN THICK ON SOLDER LEAD, ALL OVER 1.27µm [.000050] MIN THICK NICKEL UNDERPLATE.
 SHELL - 5.08µm [.000200] MIN NICKEL OVER 1.27µm [.000050] MIN COPPER.
 BRACKET - NICKEL PLATE.
- △ POSITION TOLERANCE APPLIES AT TIP ONLY.
- △ MATERIAL:
 CONTACTS - PHOSPHOR BRONZE.
 HOUSING - UL V-0 RATED THERMOPLASTIC, COLOR: BLACK.
 BRACKET - ZINC.
 SHELL - CARBON STEEL.
- △ ACTUAL HOLE SIZE USED WILL DEPEND ON TRACE ROUTING REQUIREMENTS BETWEEN HOLES AND CONNECTOR PLACEMENT TECHNIQUE.

	X	Y	Z	NO. OF POSN	PART NUMBER
X	84.20 [3.315]	62.23 [2.450]	66.45 [2.616]	100	749070-9
X	63.88 [2.515]	41.91 [1.650]	46.13 [1.816]	68	749070-7
Y	52.45 [2.065]	30.48 [1.200]	34.70 [1.366]	50	749070-5

THIS DRAWING IS A CONTROLLED DOCUMENT. DATE: 03-28-98. DRAWN BY: J. ALVISELLI. CHECKED BY: J. ALVISELLI. TITLE: RECEPTACLE ASSEMBLY, SHIELDED, VERTICAL, AMPHIMATE, 050 Series. SIZE: 4.1. SHEET: 1 OF 1.

Teco Electronics Corporation
 Harrisburg, PA 17105-3608