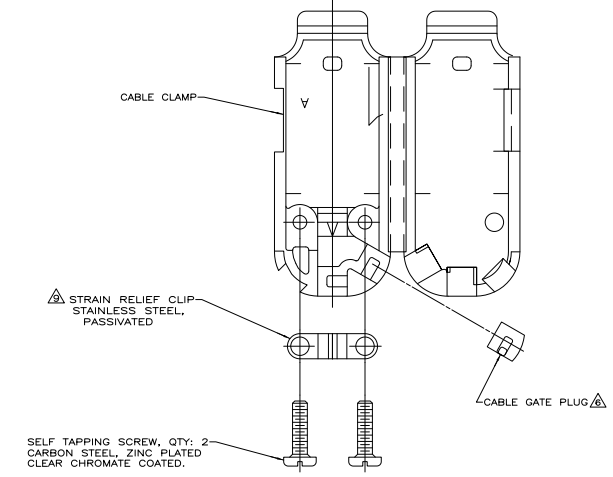
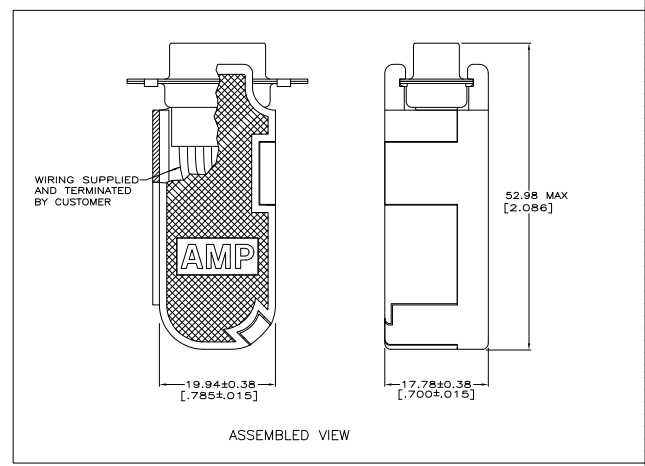
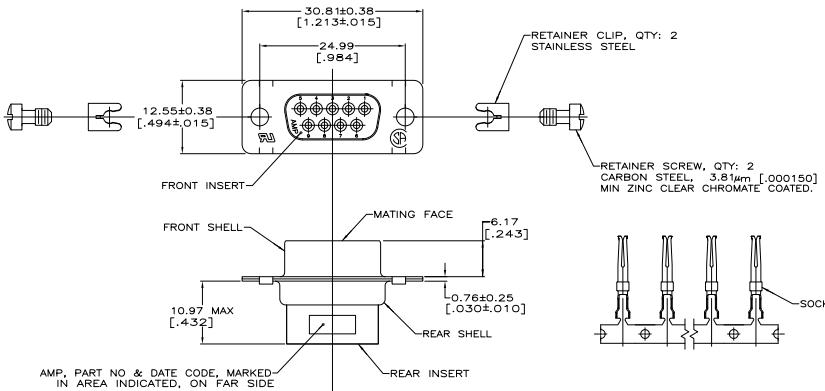


THIS DRAWING IS UNPUBLISHED
 ALL RIGHTS RESERVED

REV	DATE	DESCRIPTION	BY	CHK	APP
GP 00					
A1		REVISED PER EDD-11-004835	11MMR11	RK	HMR



- CONTACTS ACCEPT 20-24 AWG RANGE.
- INSERTS: NYLON, GLASS FILLED, UL 94V-0 RATED, BLACK.
- CABLE CLAMPS: POLYPROPYLENE, BLACK.
- CONTACTS: PHOSPHOR BRONZE.
- SHELLS: CARBON STEEL.
- CABLE GATE PLUG TO BE PLACED IN CABLE EXIT NOT BEING USED.
- CONTACTS: GOLD FLASH FOR A LENGTH OF 2.54[.100] MIN FROM MATING END, 2.54μm[.000100] MIN TIN ON OPPOSITE END FOR A LENGTH OF 4.06 [160] MIN FROM END OF INSULATION BARREL, BOTH OVER 0.76μm[.000030] MIN NICKEL ON ENTIRE CONTACT.
- SHELLS: 5.08μm[.000200] MIN TIN OVER 2.54μm[.000100] MIN COPPER.
- STRAIN RELIEF CLIP CAN BE REVERSED FOR PROPER INSTALLATION, DEPENDING ON SIZE OF CABLE DIAMETER.
- CABLE DIAMETER RANGE = 1.91-6.35 [.075-.250].

749812-7
 PART NO

THIS DRAWING IS A CONTROLLED DOCUMENT.		BY: MEITZEL	DATE: 11/01/05	TE Connectivity
DRAWING LABEL:		BY: BOLASH	DATE: 11/01/05	RECEPTACLE KIT, UNASSEMBLED, SIZE 1, 9 POSITION, AMPULITE, HSP-20
INCHES	UNLESS OTHERWISE SPECIFIED	BY: MUMFORD	DATE: 11/01/05	REVISION: 1
1/16"	0.0625	BY: 108-40005	DATE: 11/01/05	REVISED TO: 1
1/8"	0.125	BY: 114-40030	DATE: 11/01/05	REVISED TO: 1
1/4"	0.25	BY: 114-40030	DATE: 11/01/05	REVISED TO: 1
3/8"	0.375	BY: 114-40030	DATE: 11/01/05	REVISED TO: 1
1/2"	0.5	BY: 114-40030	DATE: 11/01/05	REVISED TO: 1
3/4"	0.75	BY: 114-40030	DATE: 11/01/05	REVISED TO: 1
1"	1.0	BY: 114-40030	DATE: 11/01/05	REVISED TO: 1
1 1/4"	1.5	BY: 114-40030	DATE: 11/01/05	REVISED TO: 1
1 1/2"	1.5	BY: 114-40030	DATE: 11/01/05	REVISED TO: 1
2"	2.0	BY: 114-40030	DATE: 11/01/05	REVISED TO: 1
2 1/2"	2.5	BY: 114-40030	DATE: 11/01/05	REVISED TO: 1
3"	3.0	BY: 114-40030	DATE: 11/01/05	REVISED TO: 1
3 1/2"	3.5	BY: 114-40030	DATE: 11/01/05	REVISED TO: 1
4"	4.0	BY: 114-40030	DATE: 11/01/05	REVISED TO: 1
4 1/2"	4.5	BY: 114-40030	DATE: 11/01/05	REVISED TO: 1
5"	5.0	BY: 114-40030	DATE: 11/01/05	REVISED TO: 1
5 1/2"	5.5	BY: 114-40030	DATE: 11/01/05	REVISED TO: 1
6"	6.0	BY: 114-40030	DATE: 11/01/05	REVISED TO: 1
6 1/2"	6.5	BY: 114-40030	DATE: 11/01/05	REVISED TO: 1
7"	7.0	BY: 114-40030	DATE: 11/01/05	REVISED TO: 1
7 1/2"	7.5	BY: 114-40030	DATE: 11/01/05	REVISED TO: 1
8"	8.0	BY: 114-40030	DATE: 11/01/05	REVISED TO: 1
8 1/2"	8.5	BY: 114-40030	DATE: 11/01/05	REVISED TO: 1
9"	9.0	BY: 114-40030	DATE: 11/01/05	REVISED TO: 1
9 1/2"	9.5	BY: 114-40030	DATE: 11/01/05	REVISED TO: 1
10"	10.0	BY: 114-40030	DATE: 11/01/05	REVISED TO: 1
10 1/2"	10.5	BY: 114-40030	DATE: 11/01/05	REVISED TO: 1
11"	11.0	BY: 114-40030	DATE: 11/01/05	REVISED TO: 1
11 1/2"	11.5	BY: 114-40030	DATE: 11/01/05	REVISED TO: 1
12"	12.0	BY: 114-40030	DATE: 11/01/05	REVISED TO: 1
12 1/2"	12.5	BY: 114-40030	DATE: 11/01/05	REVISED TO: 1
13"	13.0	BY: 114-40030	DATE: 11/01/05	REVISED TO: 1
13 1/2"	13.5	BY: 114-40030	DATE: 11/01/05	REVISED TO: 1
14"	14.0	BY: 114-40030	DATE: 11/01/05	REVISED TO: 1
14 1/2"	14.5	BY: 114-40030	DATE: 11/01/05	REVISED TO: 1
15"	15.0	BY: 114-40030	DATE: 11/01/05	REVISED TO: 1
15 1/2"	15.5	BY: 114-40030	DATE: 11/01/05	REVISED TO: 1
16"	16.0	BY: 114-40030	DATE: 11/01/05	REVISED TO: 1
16 1/2"	16.5	BY: 114-40030	DATE: 11/01/05	REVISED TO: 1
17"	17.0	BY: 114-40030	DATE: 11/01/05	REVISED TO: 1
17 1/2"	17.5	BY: 114-40030	DATE: 11/01/05	REVISED TO: 1
18"	18.0	BY: 114-40030	DATE: 11/01/05	REVISED TO: 1
18 1/2"	18.5	BY: 114-40030	DATE: 11/01/05	REVISED TO: 1
19"	19.0	BY: 114-40030	DATE: 11/01/05	REVISED TO: 1
19 1/2"	19.5	BY: 114-40030	DATE: 11/01/05	REVISED TO: 1
20"	20.0	BY: 114-40030	DATE: 11/01/05	REVISED TO: 1
20 1/2"	20.5	BY: 114-40030	DATE: 11/01/05	REVISED TO: 1
21"	21.0	BY: 114-40030	DATE: 11/01/05	REVISED TO: 1
21 1/2"	21.5	BY: 114-40030	DATE: 11/01/05	REVISED TO: 1
22"	22.0	BY: 114-40030	DATE: 11/01/05	REVISED TO: 1
22 1/2"	22.5	BY: 114-40030	DATE: 11/01/05	REVISED TO: 1
23"	23.0	BY: 114-40030	DATE: 11/01/05	REVISED TO: 1
23 1/2"	23.5	BY: 114-40030	DATE: 11/01/05	REVISED TO: 1
24"	24.0	BY: 114-40030	DATE: 11/01/05	REVISED TO: 1
24 1/2"	24.5	BY: 114-40030	DATE: 11/01/05	REVISED TO: 1
25"	25.0	BY: 114-40030	DATE: 11/01/05	REVISED TO: 1
25 1/2"	25.5	BY: 114-40030	DATE: 11/01/05	REVISED TO: 1
26"	26.0	BY: 114-40030	DATE: 11/01/05	REVISED TO: 1
26 1/2"	26.5	BY: 114-40030	DATE: 11/01/05	REVISED TO: 1
27"	27.0	BY: 114-40030	DATE: 11/01/05	REVISED TO: 1
27 1/2"	27.5	BY: 114-40030	DATE: 11/01/05	REVISED TO: 1
28"	28.0	BY: 114-40030	DATE: 11/01/05	REVISED TO: 1
28 1/2"	28.5	BY: 114-40030	DATE: 11/01/05	REVISED TO: 1
29"	29.0	BY: 114-40030	DATE: 11/01/05	REVISED TO: 1
29 1/2"	29.5	BY: 114-40030	DATE: 11/01/05	REVISED TO: 1
30"	30.0	BY: 114-40030	DATE: 11/01/05	REVISED TO: 1
30 1/2"	30.5	BY: 114-40030	DATE: 11/01/05	REVISED TO: 1
31"	31.0	BY: 114-40030	DATE: 11/01/05	REVISED TO: 1
31 1/2"	31.5	BY: 114-40030	DATE: 11/01/05	REVISED TO: 1
32"	32.0	BY: 114-40030	DATE: 11/01/05	REVISED TO: 1
32 1/2"	32.5	BY: 114-40030	DATE: 11/01/05	REVISED TO: 1
33"	33.0	BY: 114-40030	DATE: 11/01/05	REVISED TO: 1
33 1/2"	33.5	BY: 114-40030	DATE: 11/01/05	REVISED TO: 1
34"	34.0	BY: 114-40030	DATE: 11/01/05	REVISED TO: 1
34 1/2"	34.5	BY: 114-40030	DATE: 11/01/05	REVISED TO: 1
35"	35.0	BY: 114-40030	DATE: 11/01/05	REVISED TO: 1
35 1/2"	35.5	BY: 114-40030	DATE: 11/01/05	REVISED TO: 1
36"	36.0	BY: 114-40030	DATE: 11/01/05	REVISED TO: 1
36 1/2"	36.5	BY: 114-40030	DATE: 11/01/05	REVISED TO: 1
37"	37.0	BY: 114-40030	DATE: 11/01/05	REVISED TO: 1
37 1/2"	37.5	BY: 114-40030	DATE: 11/01/05	REVISED TO: 1
38"	38.0	BY: 114-40030	DATE: 11/01/05	REVISED TO: 1
38 1/2"	38.5	BY: 114-40030	DATE: 11/01/05	REVISED TO: 1
39"	39.0	BY: 114-40030	DATE: 11/01/05	REVISED TO: 1
39 1/2"	39.5	BY: 114-40030	DATE: 11/01/05	REVISED TO: 1
40"	40.0	BY: 114-40030	DATE: 11/01/05	REVISED TO: 1
40 1/2"	40.5	BY: 114-40030	DATE: 11/01/05	REVISED TO: 1
41"	41.0	BY: 114-40030	DATE: 11/01/05	REVISED TO: 1
41 1/2"	41.5	BY: 114-40030	DATE: 11/01/05	REVISED TO: 1
42"	42.0	BY: 114-40030	DATE: 11/01/05	REVISED TO: 1
42 1/2"	42.5	BY: 114-40030	DATE: 11/01/05	REVISED TO: 1
43"	43.0	BY: 114-40030	DATE: 11/01/05	REVISED TO: 1
43 1/2"	43.5	BY: 114-40030	DATE: 11/01/05	REVISED TO: 1
44"	44.0	BY: 114-40030	DATE: 11/01/05	REVISED TO: 1
44 1/2"	44.5	BY: 114-40030	DATE: 11/01/05	REVISED TO: 1
45"	45.0	BY: 114-40030	DATE: 11/01/05	REVISED TO: 1
45 1/2"	45.5	BY: 114-40030	DATE: 11/01/05	REVISED TO: 1
46"	46.0	BY: 114-40030	DATE: 11/01/05	REVISED TO: 1
46 1/2"	46.5	BY: 114-40030	DATE: 11/01/05	REVISED TO: 1
47"	47.0	BY: 114-40030	DATE: 11/01/05	REVISED TO: 1
47 1/2"	47.5	BY: 114-40030	DATE: 11/01/05	REVISED TO: 1
48"	48.0	BY: 114-40030	DATE: 11/01/05	REVISED TO: 1
48 1/2"	48.5	BY: 114-40030	DATE: 11/01/05	REVISED TO: 1
49"	49.0	BY: 114-40030	DATE: 11/01/05	REVISED TO: 1
49 1/2"	49.5	BY: 114-40030	DATE: 11/01/05	REVISED TO: 1
50"	50.0	BY: 114-40030	DATE: 11/01/05	REVISED TO: 1
50 1/2"	50.5	BY: 114-40030	DATE: 11/01/05	REVISED TO: 1
51"	51.0	BY: 114-40030	DATE: 11/01/05	REVISED TO: 1
51 1/2"	51.5	BY: 114-40030	DATE: 11/01/05	REVISED TO: 1
52"	52.0	BY: 114-40030	DATE: 11/01/05	REVISED TO: 1
52 1/2"	52.5	BY: 114-40030	DATE: 11/01/05	REVISED TO: 1
53"	53.0	BY: 114-40030	DATE: 11/01/05	REVISED TO: 1
53 1/2"	53.5	BY: 114-40030	DATE: 11/01/05	REVISED TO: 1
54"	54.0	BY: 114-40030	DATE: 11/01/05	REVISED TO: 1
54 1/2"	54.5	BY: 114-40030	DATE: 11/01/05	REVISED TO: 1
55"	55.0	BY: 114-40030	DATE: 11/01/05	REVISED TO: 1
55 1/2"	55.5	BY: 114-40030	DATE: 11/01/05	REVISED TO: 1
56"	56.0	BY: 114-40030	DATE: 11/01/05	REVISED TO: 1
56 1/2"	56.5	BY: 114-40030	DATE: 11/01/05	REVISED TO: 1
57"	57.0	BY: 114-40030	DATE: 11/01/05	REVISED TO: 1
57 1/2"	57.5	BY: 114-40030	DATE: 11/01/05	REVISED TO: 1
58"	58.0	BY: 114-40030	DATE: 11/01/05	REVISED TO: 1
58 1/2"	58.5	BY: 114-40030	DATE: 11/01/05	REVISED TO: 1
59"	59.0	BY: 114-40030	DATE: 11/01/05	REVISED TO: 1
59 1/2"	59.5	BY: 114-40030	DATE: 11/01/05	REVISED TO: 1
60"	60.0	BY: 114-40030	DATE: 11/01/05	REVISED TO: 1
60 1/2"	60.5	BY: 114-40030	DATE: 11/01/05	REVISED TO: 1
61"	61.0	BY: 114-40030	DATE: 11/01/05	REVISED TO: 1
61 1/2"	61.5	BY: 114-40030	DATE: 11/01/05	REVISED TO: 1
62"	62.0	BY: 114-40030	DATE: 11/01/05	REVISED TO: 1
62 1/2"	62.5	BY: 114-40030	DATE: 11/01/05	REVISED TO: 1
63"	63.0	BY: 114-40030	DATE: 11/01/05	REVISED TO: 1
63 1/2"	63.5	BY: 114-40030	DATE: 11/01/05	REVISED TO: 1
64"	64.0	BY: 114-40030	DATE: 11/01/05	REVISED TO: 1
64 1/2"	64.5	BY: 114-40030	DATE: 11/01/05	REVISED TO: 1
65"	65.0	BY: 114-40030	DATE: 11/01/05	REVISED TO: 1
65 1/2"	65.5	BY: 114-40030	DATE: 11/01/05	REVISED TO: 1
66"	66.0	BY: 114-40030	DATE: 11/01/05	REVISED TO: 1
66 1/2"	66.5	BY: 114-40030	DATE: 11/01/05	REVISED TO: 1
67"	67.0	BY: 114-40030	DATE: 11/01/05	REVISED TO: 1
67 1/2"	67.5	BY: 114-40030	DATE: 11/01/05	REVISED TO: 1
68"	68.0	BY: 114-40030	DATE: 11/01/05	REVISED TO: 1
68 1/2"	68.5	BY: 114-40030	DATE: 11/01/05	REVISED TO: 1
69"	69.0	BY: 114-40030	DATE: 11/01/05	REVISED TO: 1
69 1/2"	69.5	BY: 114-40030	DATE: 11/01/05	REVISED TO: 1
70"	70.0	BY: 114-40030	DATE: 11/01/05	REVISED TO: 1
70 1/2"	70.5	BY: 114-40030	DATE: 11/01/05	REVISED TO: 1
71"	71.0	BY: 114-40030	DATE: 11/01/05	REVISED TO: 1
71 1/2"	71.5	BY: 114-40030	DATE: 11/01/05	REVISED TO: 1
72"	72.0			