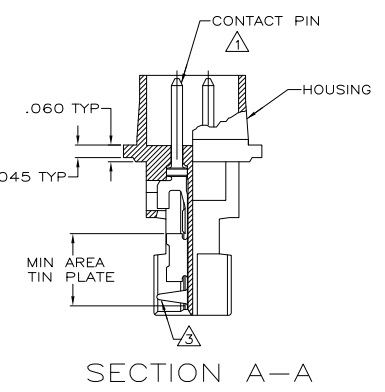
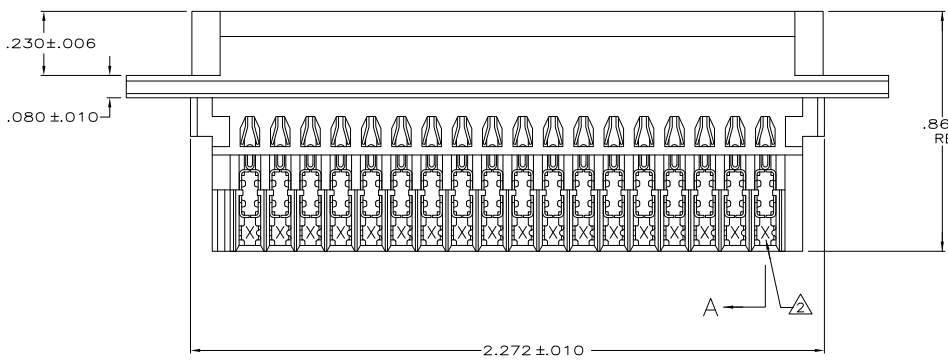
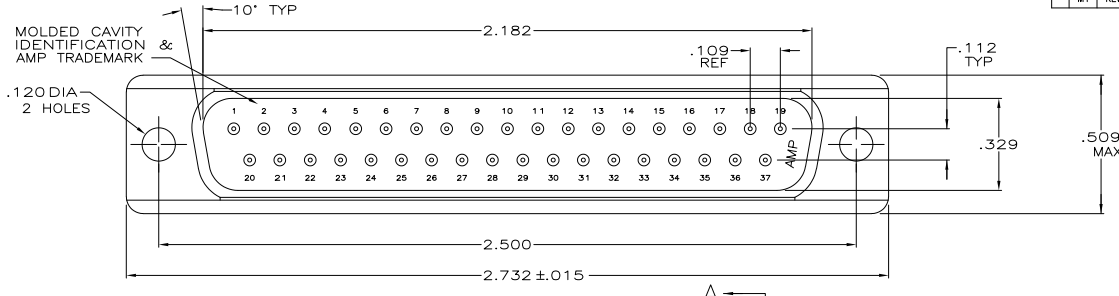


THIS DRAWING IS UNPUBLISHED. RELEASED FOR PUBLICATION. ALL RIGHTS RESERVED.

LOC	DIST	REVISIONS					
GP	00	P	LTR	DESCRIPTION	DATE	BY	APPD
		M1		REVISED PER ECO-11-004835	11MAR11	RK	HMR



- 1 HOUSING FULLY LOADED WITH CONTACTS.
- 2 NUMBER ON CONTACT INDICATES WIRE RANGE.
- 3 CONTACT INSULATION RANGE: .060 MAXIMUM O.D.
- 4 CONTACTS PLATED GOLD PLATED FOR LENGTH OF .150 MIN FROM MATING END, .000030 MIN GOLD IN MATED AREA, .000100-.000200 BRIGHT TIN OR BRIGHT IN TIN-LEAD AREA SHOWN. .000050 NICKEL UNDERPLATE ON ENTIRE CONTACT.
- 5 CONTACTS PLATED GOLD PLATED FOR LENGTH OF .150 MIN FROM MATING END, GOLD FLASH IN MATED AREA, .000100-.000200 BRIGHT TIN OR BRIGHT IN TIN-LEAD AREA SHOWN. .000030 NICKEL UNDERPLATE ON ENTIRE CONTACT.
- 6 CONTACTS GOLD PLATED FOR A LENGTH OF .150 MIN FROM MATING END, .000030 MIN GOLD IN MATED AREA, .000100-.000200 MATTE TIN IN AREA SHOWN, ALL OVER .000050 MIN NICKEL UNDERPLATE ON ENTIRE CONTACT.
OR
CONTACTS GOLD PLATED FOR A LENGTH OF .150 MIN FROM MATING END, GOLD FLASH OVER PALLADIUM-NICKEL, .000030 MIN TOTAL IN MATED AREA, .000100-.000200 MATTE TIN IN AREA SHOWN, ALL OVER .000050 MIN NICKEL UNDERPLATE ON ENTIRE CONTACT.
- 7 HOUSING: BLACK THERMOPLASTIC 94V-0 RATED.
CONTACTS: PHOSPHOR BRONZE.

FINISH	AWG WIRE RANGE	PART NUMBER	
6	2	#22-26	745215-7
6	3	#20-22	745215-6
5	2	#22-26	745215-5
5	1	#26-30	745215-4
4	3	#20-22	745215-3
4	2	#22-26	745215-2
4	1	#26-30	745215-1

THIS DRAWING IS A CONTROLLED DOCUMENT.

DIMENSIONS: INCHES 0 PLC ± .005 1 PLC ± .002 2 PLC ± .001 3 PLC ± .0005 4 PLC ± .0002 ANGLES ± .5°	DRAWN BY: VARELA - DOCKS DATE: 11-18-04 CHECKED BY: GERACE DATE: 11-18-04 NAME: M. WALMSLEY PRODUCT SPEC: 108-40011 APPLICATION SPEC: 114-40002 WEIGHT: -	SIZE: A2 CASE CODE: 00779 DRAWING NO: C=745215 SCALE: 4:1 SHEET: 1 of 1 REV: M1
---	--	--

CUSTOMER DRAWING