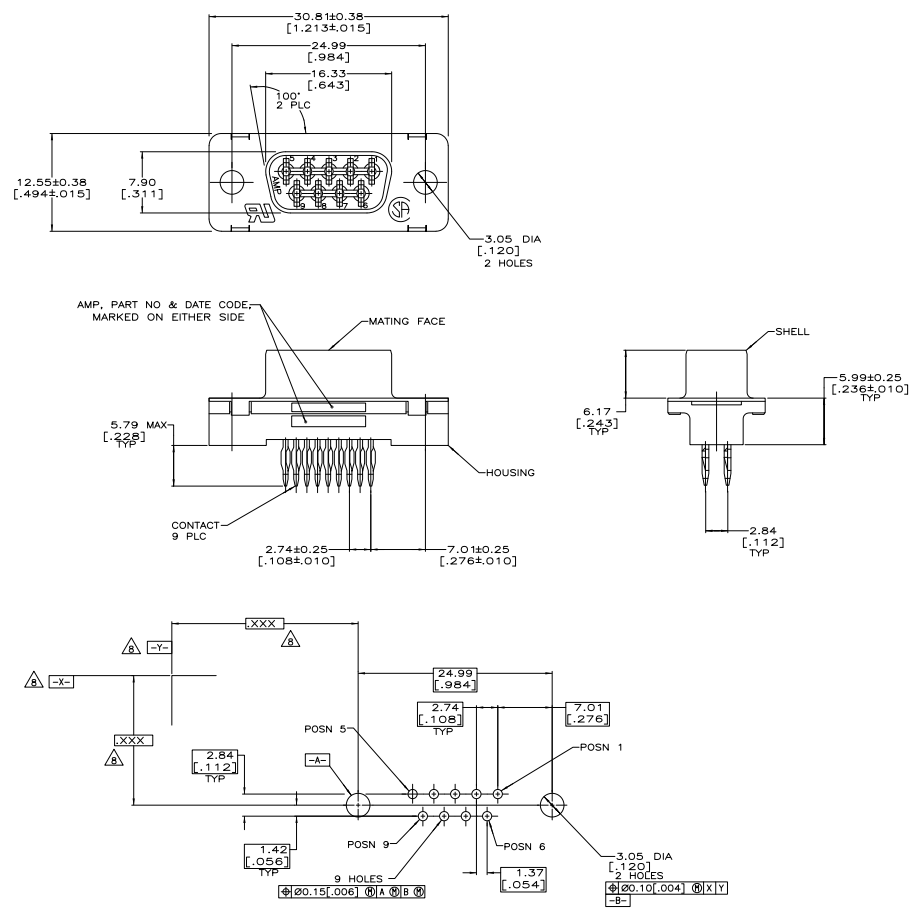


REV	DATE	DESCRIPTION	BY	APP
00				
L		REVISED PER EDD-10-018804	DMOYHO	HMR JL



- △ RECOMMENDATIONS FOR 2.36 [.093] MIN THICK PC BOARD:
 - A. HOLE DIAMETER AFTER DRILLING=1.14±0.03 [.045±.001]
 - B. HOLE DIAMETER AFTER TIN-LEAD PLATING = 0.94-1.09 [.037-.043]
 - C. HOLE DIAMETER AFTER REFLOW = 0.91-1.09 [.036-.043]
 - D. PC BOARD PLATING TO BE 7.62µm [.000300] MIN TIN-LEAD OVER 0.05±0.03 [.002±.001] COPPER.
- △ HOUSING: NYLON OR POLYESTER, UL 94V-0 RATED, GLASS FILLED, BLACK.
- △ CONTACTS: COPPER ALLOY.
- △ SHELL: CARBON STEEL.
- △ GOLD FLASH IN MATING AREA.
2.54 MICROMETERS [.000100] MINIMUM TIN OR TIN-LEAD ON COMPLIANT PIN.
ALL OVER 1.27 MICROMETERS [.000050] MINIMUM NICKEL.
- △ SHELL: 5.08µm [.000200] MIN TIN OVER 2.54µm [.000100] MIN COPPER.
- △ 0.76 MICROMETERS [.000030] MIN GOLD IN MATING AREA.
2.54 MICROMETERS [.000100] MIN TIN OR TIN-LEAD ON COMPLIANT PIN.
ALL OVER 1.27 MICROMETERS [.000050] MIN NICKEL.
- OR
GOLD FLASH OVER PALLADIUM NICKEL.
0.76 MICROMETERS [.000030] MIN TOTAL IN MATING AREA.
2.54 MICROMETERS [.000100] MIN TIN OR TIN-LEAD ON COMPLIANT PIN.
ALL OVER 1.27 MICROMETERS [.000050] MIN NICKEL.
- △ DATUM AND BASIC DIMENSION ESTABLISHED BY CUSTOMER.

RECOMMENDED PC BOARD MOUNTING DIMENSIONS △
CONNECTOR SIDE OF BOARD

747089-2	△
747089-1	△
CONTACT FINISH	△
PART NO	△

THIS DRAWING IS A CONTROLLED DOCUMENT.		DATE	REV	BY	APP
INCHES	MM	10/17/01	00/00/01		
DESIGNED BY	DATE	10/17/01	00/00/01		
DRAWN BY	DATE	10/17/01	00/00/01		
CHECKED BY	DATE	10/17/01	00/00/01		
APPROVED BY	DATE	10/17/01	00/00/01		
CUSTOMER DRAWING	DATE	10/17/01	00/00/01		