

4

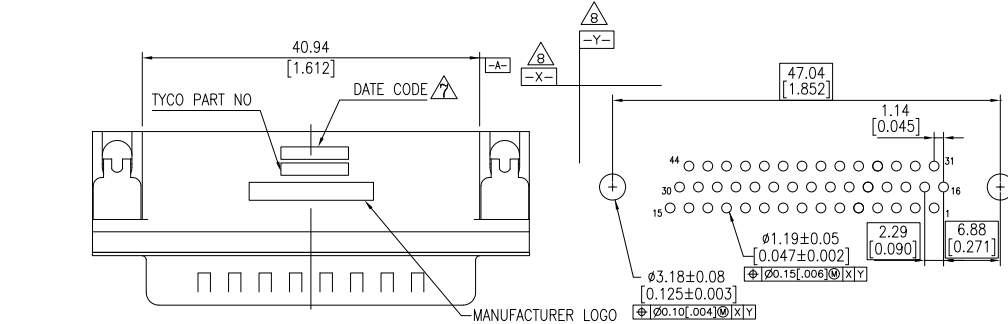
3

2

1

THIS DRAWING IS UNPUBLISHED. RELEASED FOR PUBLICATION.
 BY TYCO ELECTRONICS CORPORATION. ALL RIGHTS RESERVED.

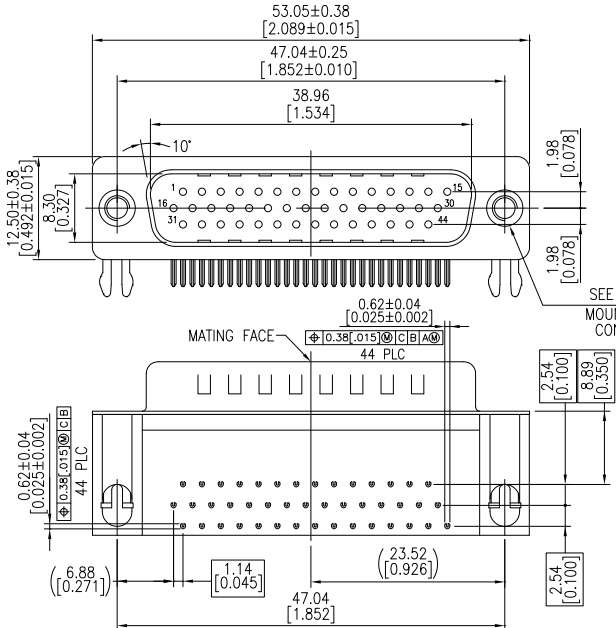
LOC	DIST	REVISIONS					
GP	00	F	LR	DESCRIPTION	DATE	BY	APP'D
		A		REVISED PER ECO-09-005756	15APR2009	ZMR	SLB



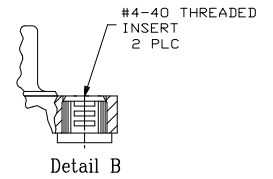
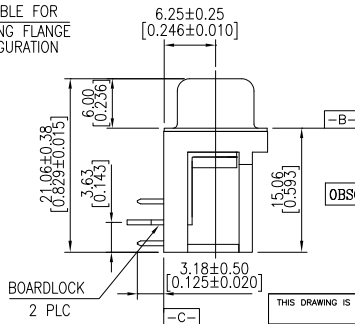
- HOUSING MATERIAL: PBT, GLASS FILLED, BLACK, UL 94V-0 RATED.
 - CONTACT MATERIAL: PHOSPHOR BRONZE.
 - CONTACT FINISH: GOLD PLATE IN MATING AREA (SEE TABLE), 120µ" MIN TIN PLATE ON SOLDER TAIL, BOTH OVER 50µ" MIN NICKEL UNDERPLATE.
 - SHELL: STEEL, NICKEL PLATE.
 - BOARDLOCK: BRASS, 100µ" MIN TIN PLATE.
 - THREADED INSERTS: BRASS, NICKEL PLATE.
- ▲ FOUR DIGIT DATE CODE IN THIS FORMAT.

Year 01 45 Manufacturing Week

▲ DATUMS $\square-X-$ & $\square-Y-$ TO BE ESTABLISHED BY CUSTOMER.



RECOMMENDED PCB LAYOUT



OBSOLETE	Tray	Detail B	Gold flash	5749771-3
	Tray	Detail B	15µ" MIN	5749771-2
	Tray	Detail B	30µ" MIN	5749771-1
Packaging	Mounting Flange Configuration	CONTACT MATING AREA FINISH	PART NUMBER	

THIS DRAWING IS A CONTROLLED DOCUMENT.		DRG	BL	MCMASTER	225EPOS	Tyco Electronics Corporation Harrisburg, PA 17105-3608		
DIMENSIONS: mm		CHK	S	BOLASH	225EPOS			
TOLERANCES UNLESS OTHERWISE SPECIFIED:		APP'D	M	WALMSLEY	225EPOS	AMPLITE HD-22 44 POS PLUG, RIGHT ANGLE		
MATERIAL: FINISH:		APPLICATION SPEC:	PRODUCT SPEC:		SIZE	CAGE CODE	DRAWING NO	RESTRICTED TO
		WEIGHT:			A2	00779	5749771	
		CUSTOMER DRAWING		SCALE	3:1	SHEET	1 of 1	REV A

AMP 1471-9 REV 31MM2000

5749771

A