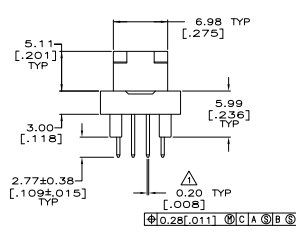
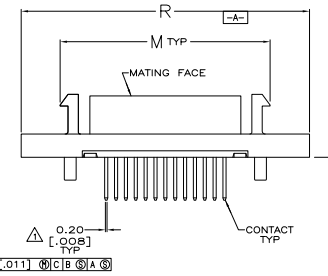
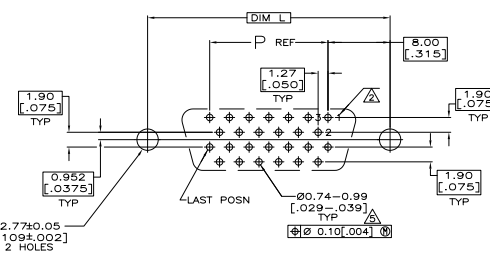
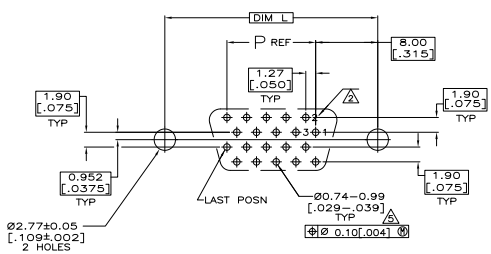
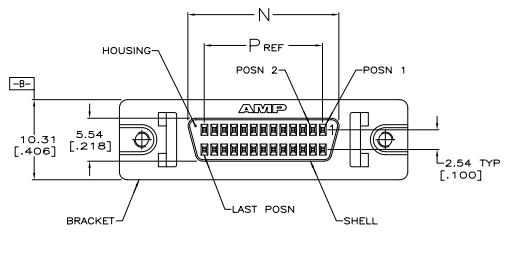
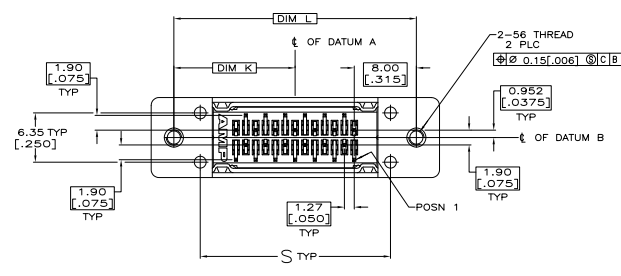


THIS DRAWING IS UNPUBLISHED
 ALL RIGHTS RESERVED

REV	DATE	DESCRIPTION	BY	CHK
00				
B		REVISED PER ECO-08-02084	ZMURBAS	
B1		REVISED PER ECO-09-024927	KK	AEG



- △ POSITION TOLERANCE APPLIES AT CONTACT TIP.
- △ POSITION NUMBERS SHOWN FOR REFERENCE ONLY.
- △ MATERIAL
 HOUSING: POLYESTER, UL 94V-0 RATED, BLACK.
 SHELL: CARBON STEEL
 CONTACTS: PHOSPHOR BRONZE
 BRACKET: ZINC
- △ FINISH
 SHELL: 5.08µm [.000200] MIN NICKEL OVER 1.27µm [.000050] MIN COPPER.
 BRACKET: 3.81µm [.000150] MIN NICKEL OVER 5.08µm [.000200] MIN COPPER.
 CONTACTS: EITHER 0.76µm [.000030] MIN GOLD PLATE FOR A LENGTH OF 0.64 [.025] MIN, 0.13 [.005] MAX FROM MATING END, OR GOLD FLASH PLATED OVER PALLADIUM NICKEL PLATE, 0.76µm [.000030] MIN TOTAL FOR A LENGTH OF 0.64 [.025] MIN, 0.13 [.005] MAX FROM MATING END. 3.81µm [.000150] MIN TIN ON SOLDER POST, BOTH OVER 1.27µm [.000050] MIN NICKEL.
- △ ACTUAL HOLE SIZE WILL DEPEND ON TRACE ROUTING REQUIREMENTS BETWEEN HOLES AND CONNECTOR PLACEMENT TECHNIQUE.
- △ OBSOLETE PARTS: OBSOLETE CIS STREAMLINING PER D.RENAUD/D.SINISI



OBSOLETE	PER DETAIL X	58.80 [2.315]	71.50 [2.819]	49.53 [1.950]	53.75 [2.116]	61.34 [2.415]	65.53 [2.580]	32.77 [1.290]	80	-5750456-0-
	PER DETAIL Y	39.75 [1.565]	52.45 [2.065]	30.48 [1.200]	34.70 [1.366]	42.29 [1.665]	46.48 [1.830]	23.24 [.915]	50	5750458-5
	RECOMMENDED PCB MTC DIMENSIONS	S	R	P	N	M	L	K	NO OF POSN	PART NO.

**COPYRIGHT 2005
 TYCO ELECTRONICS CORP
 ALL RIGHTS RESERVED**

THIS DRAWING IS A CONTROLLED DOCUMENT.

APPROVED: [Signature] DATE: 03-21-05
 DESIGNED: [Signature] DATE: 03-21-05
 CHECKED: [Signature] DATE: 03-21-05
 DRAWN: [Signature] DATE: 03-21-05

RECEIPTABLE ASSEMBLY
 WITH STAND-OFFS, SHIELDED,
 VERTICAL, ANPLATE, 020 Series

DATE: 11-4-0029
 SIZE: 114-40029
 PART: A100779 (G=5750458)

CUSTOMER DRAWING

TYCO Electronics Corporation
 Harrisburg, PA 17105-3608

REV: 4.1 SHEET: 1 OF 1