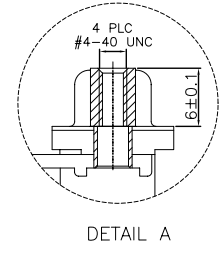
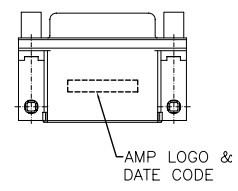
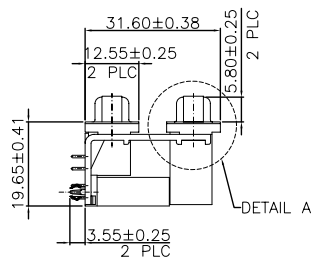
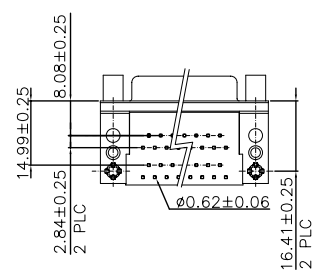
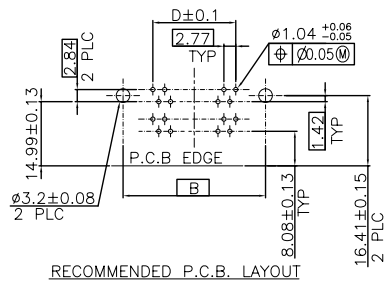
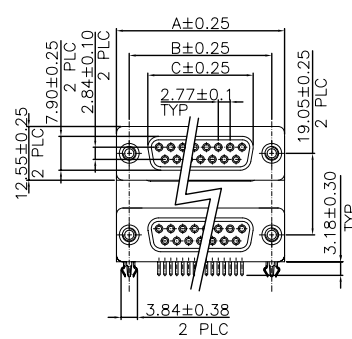


THIS DRAWING IS UNPUBLISHED. RELEASED FOR PUBLICATION AUG. 2006.
 © COPYRIGHT 2009 BY TYCO ELECTRONICS CORPORATION. ALL RIGHTS RESERVED.

LOC		DIST		REVISIONS			
P	LTR	DESCRIPTION	DATE	DWN	APVD		
B		REVISED (ECR-11-003466)	17FEB11	SC	WK		



- 1 NOTES:
- MATERIAL:
 - HOUSING: THERMOPLASTIC(SEE TABLE), UL94V-0; COLOR: SEE TABLE.
 - CONTACTS: COPPER ALLOY
 - BOARDLOCK: COPPER ALLOY
 - BRACKET: ZINC ALLOY
 - SHELL: STEEL
 - FINISH:
 - CONTACT:
 - GOLD PLATING (SEE TABLE) ON CONTACT AREA.
 - 2.54um [100u"] MIN. MATTE TIN PLATING ON SOLDER TAIL AREA.
 - 1.27um [50u"] MIN. NICKEL UNDERPLATING OVERALL.
 - BOARDLOCK:
 - 1.52um [60u"] MIN. MATTE TIN PLATING OVERALL.
 - 1.27um [50u"] MIN. NICKEL UNDERPLATING OVERALL.
 - SHELL:
 - 60u" MIN. BRIGHT TIN PLATING OVERALL.
- ▲ WAVE SOLDER CAPABLE TO 265°C PER TE SPEC. 109-202, CONDITION B.
 ▲ REFLOW SOLDER CAPABLE TO 260°C PER TE SPEC. 109-201, CONDITION B.
 5. CHOOSE PRE-FIX FROM LEFT TABLE AND SUFFIX FROM RIGHT TABLE FOR DESIRED PART NUMBER COMBINATION.

PART NO.	GOLD PLATING	HSG COLOR
X-1734286-6	30 u"	PC99/ACTUAL COLOR
X-1734286-5	10 u"	PC99/ACTUAL COLOR
X-1734286-4	GOLD FLASH	PC99/ACTUAL COLOR AVAILABLE
X-1734286-3	30 u"	BLACK
X-1734286-2	10 u"	BLACK
X-1734286-1	GOLD FLASH	BLACK

PART NO.	PINS	A	B	C	D	HOUSING
5-1734286-X	15-15	39.30	33.30	24.60	19.39	NY9T ▲
3-1734286-X	37-37	69.34	63.50	54.80	49.86	
2-1734286-X	25-25	53.10	47.04	38.30	33.24	PBT ▲
1-1734286-X	15-15	39.30	33.30	24.60	19.39	
1734286-X	9-9	30.95	24.99	16.20	11.08	

THIS DRAWING IS A CONTROLLED DOCUMENT.

DWN: S. CHIEN 18MAY2009	Tyco Electronics Corporation Taipei, Taiwan
CHK: S. CHIEN 18MAY2009	
APVD: W. KODAMA 18MAY2009	NAME: D-SUB STACKED RCPT. OVER RCPT. R/A TYPE, WITH #4-40 SCREWLOCK
PRODUCT SPEC: 108-57517	SIZE: CAGE CODE: DRAWING NO: 501-57590
APPLICATION SPEC: 501-57590	RESTRICTED TO: A3 00779 ©=1734286
MATERIAL: SEE NOTE	WEIGHT: GRAMS
FINISH: SEE NOTE	CUSTOMER DRAWING

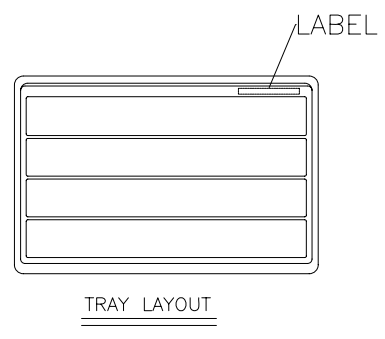
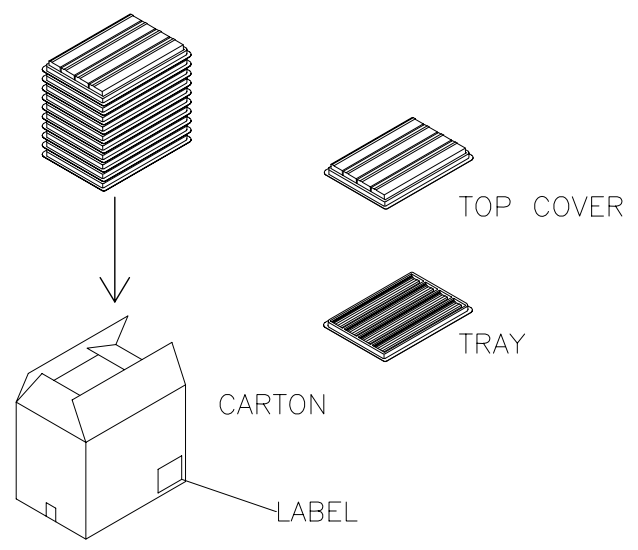
SCALE: — SHEET: 1 of 2 REV: B

THIS DRAWING IS UNPUBLISHED. RELEASED FOR PUBLICATION AUG. 2006.
 © COPYRIGHT 2009 BY TYCO ELECTRONICS CORPORATION. ALL RIGHTS RESERVED.

LOC	DIST	REVISIONS			
P	LTR	DESCRIPTION	DATE	DWN	APVD
		SEE SHEET 1.			

- NOTE :
- DIMENSION :
 TRAY : L=315, W=215, H=30
 CARTON : L=335, W=230, H=280
 - TRAY : PS or PET
 - QUANTITY:

PIN NO.	9-9	15-15	25-25	37-37
PCS/TRAY	36	28	20	16
TRAY/CARTON	10	10	10	10
PCS/CARTON	360	280	200	160
NET WEIGHT	10.33	10.0	9.85	10.57
GROSS WEIGHT	11.75	11.25	11.28	11.73



THIS DRAWING IS A CONTROLLED DOCUMENT.		DWN	Tyco Electronics Corporation Taipei, Taiwan	
DIMENSIONS: MM		CHK	NAME	
		APVD	D-SUB STACKED RCPT. OVER RCPT. R/A TYPE, WITH #4-40 SCREWLOCK	
TOLERANCES UNLESS OTHERWISE SPECIFIED:		PRODUCT SPEC	SIZE	CAGE CODE
0 PLC	± -	APPLICATION SPEC	A3	00779
1 PLC	± -	WEIGHT	DRAWING NO. C=1734286	
2 PLC	± -	MATERIAL	RESTRICTED TO	
3 PLC	± -	FINISH	CUSTOMER DRAWING	
4 PLC	± -		SCALE	SHEET
ANGLES	± -			2 OF 2
				REV B