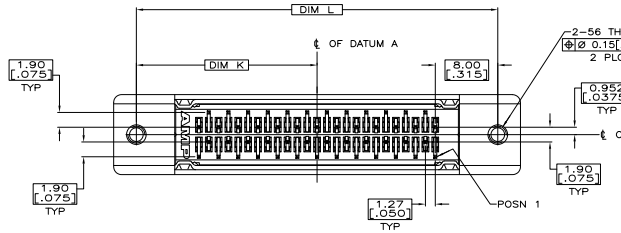
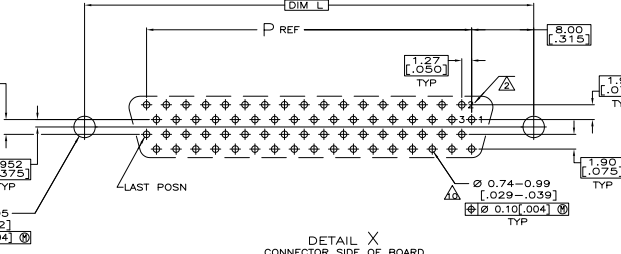
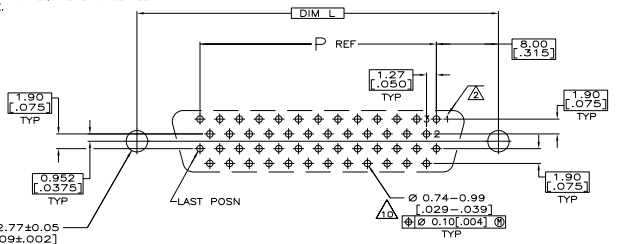
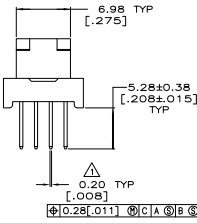
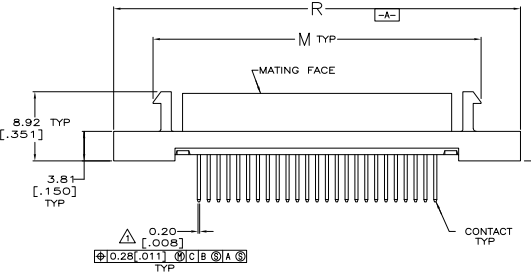
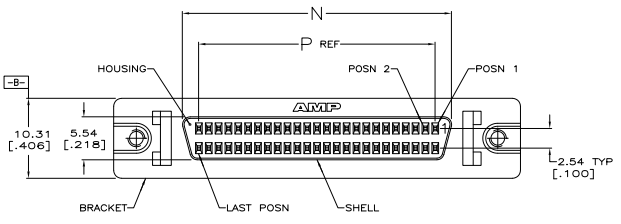


REV	DATE	DESCRIPTION	BY	CHK	APP
GP 00					
B		REVISED PER ECO-08-02084			ZM/RBAS

- ▲ POSITION TOLERANCE APPLIES AT CONTACT TIP.
- ▲ POSITION NUMBERS SHOWN FOR REFERENCE ONLY.
- ▲ MATERIAL
 HOUSING: POLYESTER, UL 94V-0 RATED, BLACK.
 SHELL: CARBON STEEL.
 CONTACTS: PHOSPHOR BRONZE.
 BRACKET: ZINC.
- ▲ FINISH
 SHELL: 5.08µm [.000200] MIN NICKEL OVER 1.27µm [.000050] MIN COPPER.
 BRACKET: 3.81µm [.000150] MIN NICKEL OVER 5.08µm [.000200] MIN COPPER.
 CONTACTS: EITHER 0.76µm [.000030] MIN GOLD PLATE FOR A LENGTH OF 0.64 [.025] MIN, 0.13 [.005] MAX FROM MATING END, OR GOLD FLASH PLATED OVER PALLADIUM NICKEL PLATE, 0.76µm [.000030] MIN TOTAL FOR A LENGTH OF 0.64 [.025] MIN, 0.13 [.005] MAX FROM MATING END. 3.81µm [.000150] MIN TIN ON SOLDER POST, ALL OVER 1.27µm [.000050] MIN NICKEL UNDERPLATE.
- ▲ ACTUAL HOLE SIZE WILL DEPEND ON TRACE ROUTING REQUIREMENTS BETWEEN HOLES AND CONNECTOR PLACEMENT TECHNIQUE.



PER DETAIL Y	52.45 [2.065]	30.48 [1.200]	34.70 [1.366]	42.29 [1.665]	46.48 [1.830]	23.24 [.915]	50	5786136-5
RECOMMENDED PCB MFG DIMENSIONS	R	P	N	M	L	K	NO OF POSN	PART NO

**COPYRIGHT 2005
 TYCO ELECTRONICS CORP
 ALL RIGHTS RESERVED**

THIS DRAWING IS A CONTROLLED DOCUMENT. ATTACHMENT NO. 000001

APPROVED	DATE	BY	CHK	APP

RECEPACLE ASSEMBLY, SHIELDED, VERTICAL, 050 SERIES AMP/LMITE

114-40029

100779 C=5786136

CUSTOMER DRAWING