

4

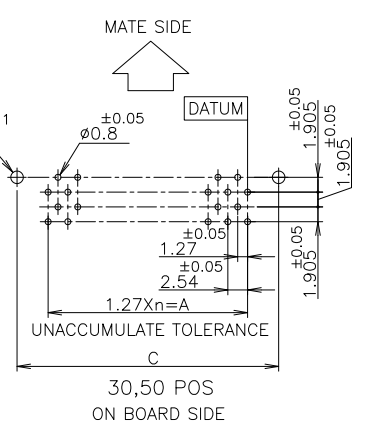
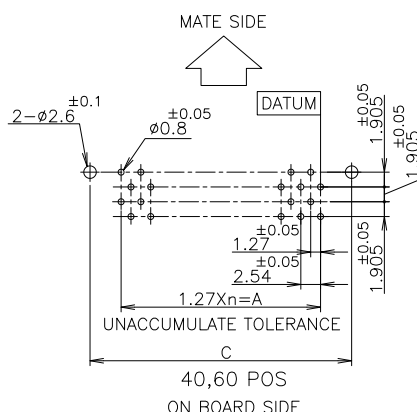
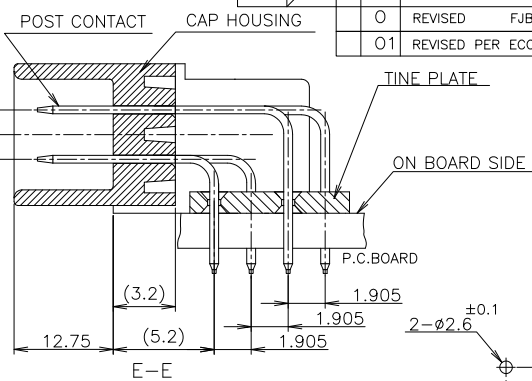
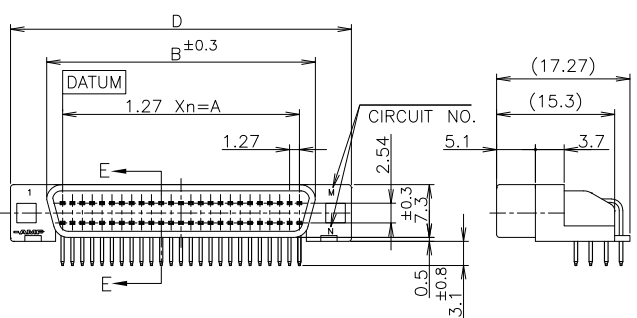
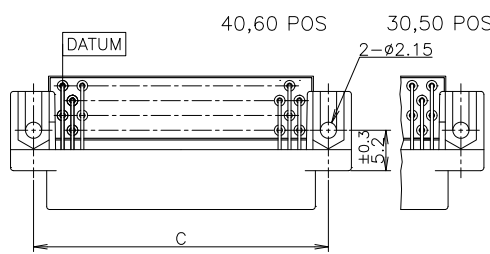
3

2

1

THIS DRAWING IS UNPUBLISHED. RELEASED FOR PUBLICATION OCT. 1988.
 COPYRIGHT 1988 BY TYCO ELECTRONICS CORPORATION. ALL RIGHTS RESERVED.

P	LTR	DESCRIPTION	DATE	DWN	APVD
0		REVIS	FJBO-0871-04	18AUG04	C.W I.E
01		REVISED PER ECO-09-024927	09NOV09	KK	AEG



- 1 USE A P.C.B. WHOSE ARE TREATED WITH SOLDER RESIST.
 - 2 SHOW P.C.B LAYOUT FROM ON BOARD SURFACE SIDE.
 - 3 NUMBER THE CONTACT IN THE P.C.B OR CONNECTOR CONSECUTIVELY FROM "DATUM" SIDE.
 - 4 APPLY M2 SCREW & NUT TO FIX OF CONNECTOR.
- △ HOUSING MATERIAL : P.B.T(UL94V-0) / BLACK
 △ CONTACT MATERIAL : PHOS-BRONZE
 △ FINISH : NICKEL 0.00127 MIN THK, OVERALL SELECTIVE GOLD 0.00076 MIN. OR 0.0002 MIN. THK ON CONTACT AREA AND TIN 0.001 MIN THK. ON TINE AREA.
 △ OBSOLETE PARTS: OBSOLETE CIS STREAMLINING PER D.RENAUD/D.SINISI

REMARK	PART NUMBER	POS	n	A	B	C	D		
Au PL. 0.00076 MIN.	△	6	-4	60	29	36.83	42.80	44.23	50.23
		6	-3	50	24	30.48	36.45	37.88	43.88
		6	-2	40	19	24.13	30.10	31.53	37.53
		6	-1	30	14	17.78	23.75	25.18	31.18
		6	-4	60	29	36.83	42.80	44.23	50.23
		6	-3	50	24	30.48	36.45	37.88	43.88
Au PL. 0.0002 MIN.	△	6	-2	40	19	24.13	30.10	31.53	37.53
		6	-1	30	14	17.78	23.75	25.18	31.18
5173278-1		30	14	17.78	23.75	25.18	31.18		

LEAD FREE

GENERAL TOLERANCE
 10 ≥ : ±0.2
 30 ≥ > 10: ±0.25
 100 ≥ > 30: ±0.3
 ANGLES: ±3'

THIS DRAWING IS A CONTROLLED DOCUMENT.

DIMENSIONS: MM

TOLERANCES UNLESS OTHERWISE SPECIFIED:
 0 PLC ±
 1 PLC ±
 2 PLC ±
 3 PLC ±
 4 PLC ±
 ANGLES ±

MATERIAL: SEE NOTE △
 FINISH: SEE NOTE △

DWN: COREL WANG
 CHK: STEVEN YAO
 APVD: I. ENOMOTO
 PRODUCT SPEC: 108-60036
 APPLICATION SPEC

18AUG04
 18AUG04
 18AUG04

Tyco Electronics AMP K.K.
 Kawasaki, Japan

NAME: CAP ASSY (HORIZONTAL / W/O LEG)
 AMPLIMITE .050 SERIES I B-TO-B CONN.

SIZE: A3
 CAGE CODE: 00779
 DRAWING NO: 5173278
 RESTRICTED TO

CUSTOMER DRAWING
 SCALE: NTS
 SHEET: 1 OF 1
 REV: 01