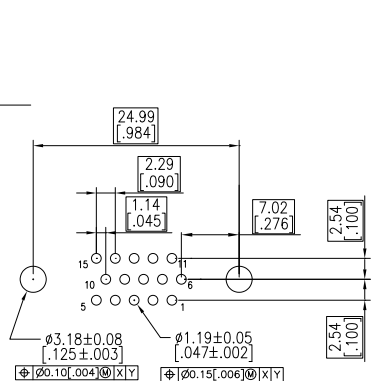
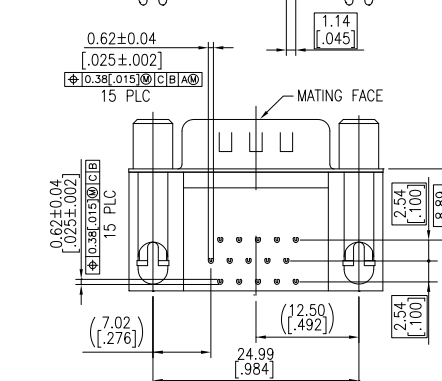
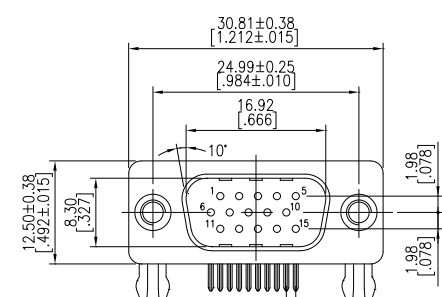
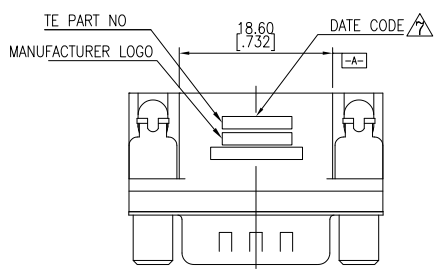
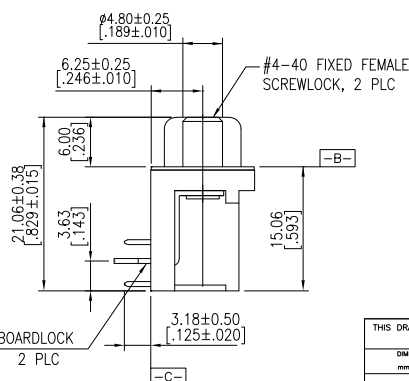


THIS DRAWING IS UNPUBLISHED. RELEASED FOR PUBLICATION.  
 BY TYCO ELECTRONICS CORPORATION. ALL INTERNATIONAL RIGHTS RESERVED.

LOC		DIST		REVISIONS			
GP	00	F	LNK	DESCRIPTION	DATE	BY	APP'D
		C		REVISED PER ECO-09-005756	15APR2009	ZMR	SLB



RECOMMENDED PCB LAYOUT



- HOUSING MATERIAL: PBT, GLASS FILLED, BLACK, UL 94V-0 RATED.
  - CONTACT MATERIAL: PHOSPHOR BRONZE.
  - CONTACT FINISH: GOLD PLATE IN MATING AREA (SEE TABLE), 120µ" MIN TIN PLATE ON SOLDER TAIL, BOTH OVER 50µ" MIN NICKEL UNDERPLATE.
  - SHELL: STEEL, NICKEL PLATE.
  - BOARDLOCK: BRASS, 100µ" MIN TIN PLATE.
  - FEMALE SCREWLOCK: BRASS, NICKEL PLATE.
- △ FOUR DIGIT DATE CODE IN THIS FORMAT.  
 Year 01 45 Manufacturing Week
- △ DATUMS -X- & -Y- TO BE ESTABLISHED BY CUSTOMER.

OBSOLETE	Gold Flash	5749768-3
OBSOLETE	15µ" MIN	5749768-2
	30µ" MIN	5749768-1
	CONTACT MATING AREA FINISH	PART NUMBER

THIS DRAWING IS A CONTROLLED DOCUMENT.		DRN	J. GERACE	22FEB04	Tyco Electronics Corporation Harrisburg, PA 17105-3608
DIMENSIONS: mm [INCHES]		CHK	S. BOLASH	22FEB04	
TOLERANCES UNLESS OTHERWISE SPECIFIED:		APP'D	M. MALMSLEY	NAME	
0 PLC ± .005 [0.005]		PRODUCT SPEC	108-1092		AMPLITE HD-22
1 PLC ± 0.38 [0.015]		APPLICATION SPEC	114-13198		15 POS PLUG, RIGHT ANGLE
2 PLC ± 0.25 [0.010]		SIZE	CAGE CODE	DRAWING NO	RESTRICTED TO
3 PLC ± 0.15 [0.006]		HEIGHT	A2	00779	C=5749768
4 PLC ± .005 [0.005]					
ANGLES ± .5°		CUSTOMER DRAWING	SCALE	3:1	SHEET 1 of 1
SEE NOTES	SEE NOTES				REV C