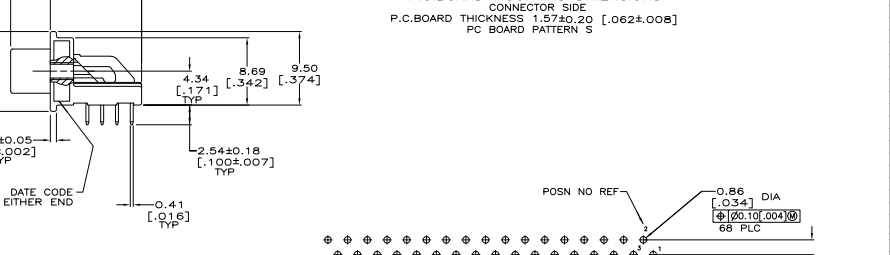
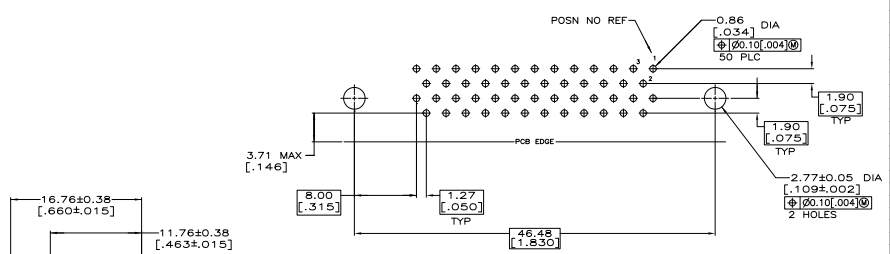
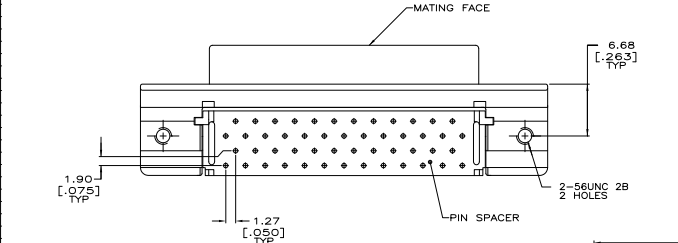
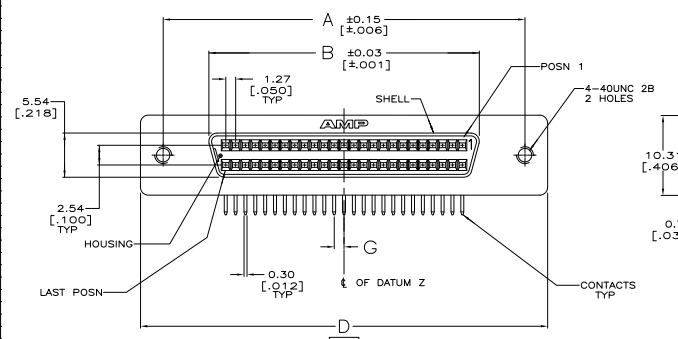
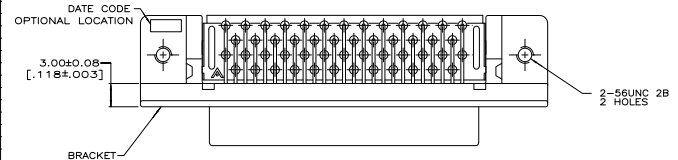


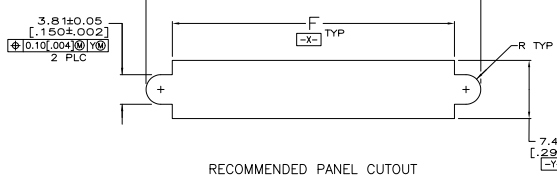
THIS DRAWING IS UNCLASSIFIED
 UNLESS INDICATED OTHERWISE
 ALL RIGHTS RESERVED

REV	DATE	DESCRIPTION	BY	CHK
GP 00	T1	REVISED PER EDD-11-004835	11MM11	RK HMR



MATERIAL
 CONTACTS: PHOSPHOR BRONZE
 HOUSING & PIN SPACER: UL 94V-O RATED, THERMOPLASTIC,
 BLACK
 BRACKET: ZINC
 SHELL: CARBON STEEL

FINISH
 CONTACTS: EITHER 0.76µm [0.00030] MIN GOLD PLATE FOR A LENGTH OF 0.64 [0.025] MAX, 0.13 [0.005] MIN FROM MATING END OR GOLD FLASH OVER PALLADIUM NICKEL PLATE, 0.76µm [0.00030] MIN TOTAL FOR A LENGTH OF 0.64 [0.025] MAX, 0.13 [0.005] MIN FROM MATING END, 3.81µm [0.00150] MIN TIN-LEAD ON OPPOSITE END FOR A OF 2.72 [0.107] MIN, ALL OVER 1.27µm [0.00050] MIN NICKEL UNDERPLATE.
 SHELL: 5.08µm [0.000200] MIN NICKEL OVER 1.27µm [0.00050] MIN COPPER.
 BRACKET: 2.54µm [0.000100] MIN NICKEL OVER 5.08µm [0.000200] COPPER.



PC BOARD PATTERN	L	G	F	E	D	B	A	NO OF POSN	PART NUMBER
T	78.23	0.64	69.44	82.04	84.20	66.45	78.23	100	787169-9
	3.080	[0.025]	2.734	3.230	3.315	2.616	3.080		
T	57.91	0.64	49.12	61.72	63.88	46.13	57.91	68	787169-7
	2.280	[0.025]	1.934	2.430	2.515	1.816	2.280		
S	-	1.27	37.69	50.29	52.45	34.70	46.48	50	787169-5
		[0.050]	1.484	1.980	2.065	1.366	1.830		

THIS DRAWING IS A CONTROLLED DOCUMENT. THE USER SHALL BE RESPONSIBLE FOR THE LATEST REVISION.

TE Connectivity
 RECEPTACLE ASSEMBLY, SHIELDED, RIGHT ANGLE, J50 SERIES, AMP/PLMITE

114-40029
 108-1228
 114-40029
 108-1228

DATE: 11/11
 DRAWING NO: 100779
 PART NO: 787169