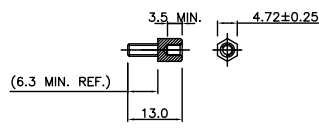
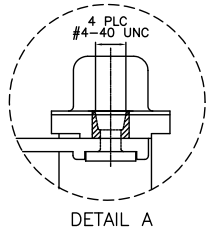
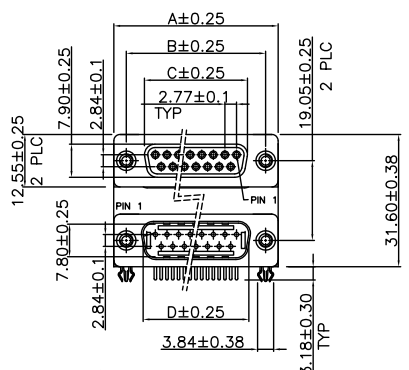


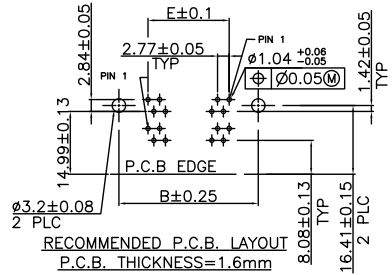
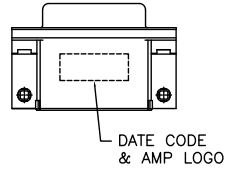
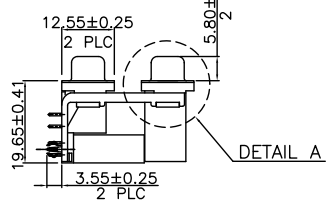
THIS DRAWING IS UNPUBLISHED. RELEASED FOR PUBLICATION
 © COPYRIGHT BY TYCO ELECTRONICS CORPORATION. ALL RIGHTS RESERVED.

LOC	DIST	REVISIONS					
DW	-	P	LTR	DESCRIPTION	DATE	DWN	APVD
		B		REVISED (ECR-11-003466)	17FEB11	JC	WK

- NOTES:
- MATERIAL:
 - HOUSING/BACK COVER: THERMOPLASTIC(PBT), UL94V-0; COLOR: SEE TABLE.
 - CONTACTS: PLUG: BRASS. RCPT.: PHOSPHOR BRONZE.
 - BOARDLOCK: BRASS.
 - BRACKET: ZINC ALLOY.
 - SHELL: STEEL.
 - FINISH:
 - CONTACT: GOLD PLATING(SEE TABLE) ON CONTACT AREA. 2.54um[100u"] MIN. MATTE TIN PLATING ON SOLDERTAILS. 1.27um[50u"] MIN. NICKEL UNDERPLATING OVERALL.
 - BOARDLOCK: 1.52um[60u"] MIN. MATTE TIN OVERALL. 1.27um[50u"] MIN. NICKEL UNDERPLATED OVERALL.
 - SHELL: 1.27um[50u"] MIN. NICKEL OVERALL.
 - WAVE SOLDER CAPABLE TO 265°C PER TE SPEC. 109-202, CONDITION B.



THIS PRODUCT EQUIPPED WITH NO SCREW
 RECOMMENDED OUTSOURCING SCREW TYPE



RECOMMENDED P.C.B. LAYOUT
 P.C.B. THICKNESS=1.6mm

3-1734207-X	37-37	69.34	63.50	55.42	54.80	49.86
2-1734207-X	25-25	53.10	47.04	38.96	38.30	33.24
1-1734207-X	15-15	39.30	33.30	25.25	24.60	19.39
1734207-X	9-9	30.95	24.99	16.92	16.20	11.08
PART NO.	PINS	A	B	C	D	E

X-1734207-6	30 u"	PC99/ACTUAL COLOR	37-37 NOT AVAILABLE
X-1734207-5	10 u"	PC99/ACTUAL COLOR	
X-1734207-4	GOLD FLASH	PC99/ACTUAL COLOR	
X-1734207-3	30 u"	BLACK	
X-1734207-2	10 u"	BLACK	
X-1734207-1	GOLD FLASH	BLACK	
PART NO.	GOLD PLATING	HSG COLOR	

THIS DRAWING IS A CONTROLLED DOCUMENT.

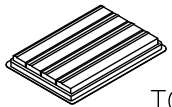
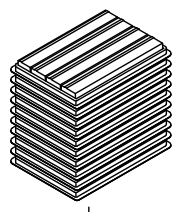
DWNS	J. LEE	19OCT2006	 Tyco Electronics Corporation Taipei, Taiwan
CHK	S. HOU	19OCT2006	
APVD	W. J. KE	19OCT2006	
DIMENSIONS: MM TOLERANCES UNLESS OTHERWISE SPECIFIED: 0 PLC ± 0.5 1 PLC ± 0.3 2 PLC ± 0.2 3 PLC ± 0.15 4 PLC ± ANGLES ± 3°			NAME D-SUB STACKED RCPT. OVER PLUG R/A TYPE, THREAD INSERTS
MATERIAL SEE NOTE			FINISH SEE NOTE
PRODUCT SPEC 108-57517		QUALIFICATION TEST REPORT 501-57590	SIZE A3
WEIGHT SEE TABLE		CAGE CODE 00779	DRAWING NO 1734207
CUSTOMER DRAWING			RESTRICTED TO - SCALE - SHEET 1 OF 2 REV B

THIS DRAWING IS UNPUBLISHED. RELEASED FOR PUBLICATION
 © COPYRIGHT BY TYCO ELECTRONICS CORPORATION. ALL RIGHTS RESERVED.

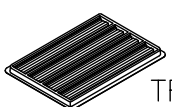
LOC	DIST	REVISIONS			
P	LTR	DESCRIPTION	DATE	DWN	APVD
DW	-	SEE SHEET 1.			

- NOTES:
 1. DIMENSION:
 TRAY: L=315, W=215, H=30
 CARTON: L=335, W=230, H=280
 2. TRAY: PS or PET
 3. QUANTITY:

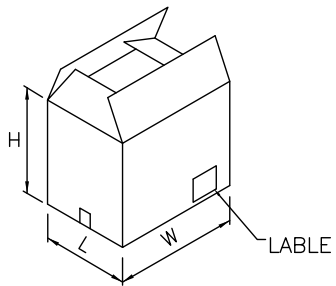
PIN NO.	9-9	15-15	25-25	37-37
PCS/TRAY	36	28	20	16
TRAY/CARTON	10	10	10	10
PCS/CARTON	360	280	200	160
NET WEIGHT	9.72	9.48	9.30	10.3
GROSS WEIGHT	11.22	10.91	10.80	11.46



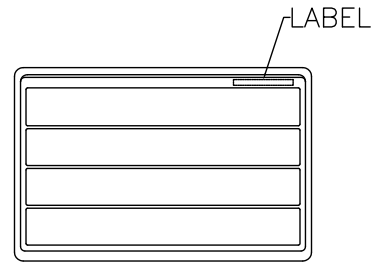
TOP COVER



TRAY



CARTON



TRAY LAYOUT

THIS DRAWING IS A CONTROLLED DOCUMENT.		DWN J. LEE 19OCT2006	Tyco Electronics Corporation Taipi, Taiwan	
DIMENSIONS: MM		CHK S. HOU 19OCT2006	NAME	
TOLERANCES UNLESS OTHERWISE SPECIFIED: 0 PLC ± - 1 PLC ± - 2 PLC ± - 3 PLC ± - 4 PLC ± - ANGLES ± -		APVD W. J. KE 19OCT2006	PRODUCT SPEC D-SUB STACKED RCPT. OVER PLUG R/A TYPE, THREAD INSERTS	
MATERIAL	FINISH	APPLICATION SPEC	SIZE A3	CAGE CODE 00779
		WEIGHT	DRAWING NO C=1734207	RESTRICTED TO
CUSTOMER DRAWING			SCALE	SHEET 2 OF 2 REV B