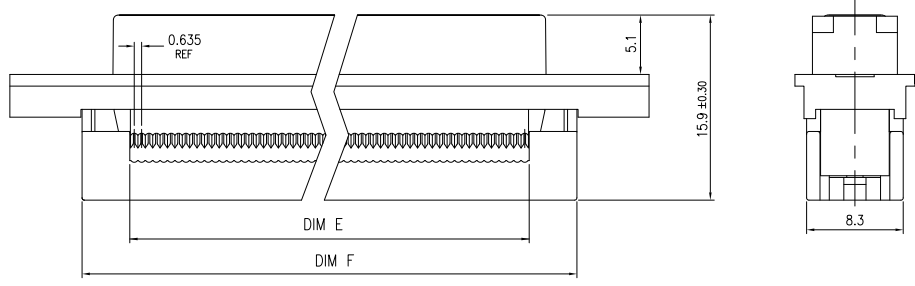
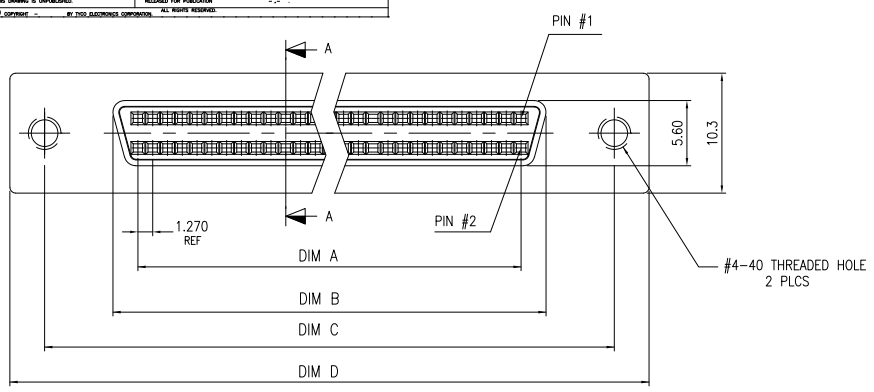
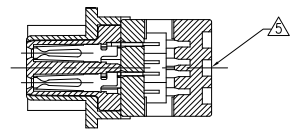


REV	DATE	DESCRIPTION	BY	CHK	APP
B		REVISED PER ECO-09-028043	15JAN2010	CR	SB
B1		REVISED PER ECO-10-002990	20JAN2010	KK	HMR



- △ HOUSING: PBT, 30% GLASS REINFORCED, UL94V-0, COLOR BLACK.  
CONTACTS: PHOS. BRONZE.  
BRACKET: ZINC ALLOY.
- △ CONTACTS: GOLD PLATED (SEE TABLE) ON MATING END, 1.27um [.000050in] MIN MATTE TIN ON TERMINATION AREA, ALL OVER 1.27um [.000050in] MIN NICKEL ON ENTIRE CONTACT.  
BRACKET: 1.27um [.000050in] MIN NICKEL.
- △ SPECIFICATIONS:  
CURRENT RATING: 1A.  
VOLTAGE RATING: 30V AC.  
INSULATION RESISTANCE: 1000 MEGOHMS MIN. AT 500V DC.  
CONTACT RESISTANCE: 55 MILLIOHMS MAX.  
DIELECTRIC WITHSTANDING VOLTAGE: 250V AC FOR 1 MINUTE.  
CONTACT RETENTION FORCE: 600 gf MIN.  
TOTAL INSERTION FORCE: 4 Kgf MAX. (FORCE DEPENDENT ON MATING CONNECTOR)  
TOTAL WITHDRAWAL FORCE: 1.5 Kgf MAX. (FORCE DEPENDENT ON MATING CONNECTOR)  
WIRE COVER RETENTION FORCE: 6 Kgf MIN.  
OPERATION TEMPERATURE: -55°C TO 85°C.
- △ FOR USE WITH 30 & 32 AWG FLAT RIBBON CABLE.  
SELECTION OF COMPATIBLE RIBBON CABLE AND APPLICATION TOOLING FOR USE WITH THIS PRODUCT IS THE RESPONSIBILITY OF THE USER.
- △ TYCO LOGO LOCATED ON THIS SURFACE.
- 6. SPECIFICATIONS SUBJECT TO CHANGE WITHOUT NOTICE.  
CONTACT TYCO ELECTRONICS FOR THE LATEST SPECIFICATIONS.
- 7. PACKAGED IN TRAYS.



SEC. A-A

SUP BY	DIM F	DIM E	DIM D	DIM C	DIM B	DIM A	CONTACT FINISH	NO OF POS	PART NUMBER
SUP BY 5390378-7	51.5	43.30	63.90	57.93	46.20	41.91	0.38um [.000015in]	68	1-5390378-7
OBSOLETE	40.07	31.87	52.47	46.50	34.77	30.48	0.38um [.000015in]	50	1-5390378-5
OBSOLETE	51.5	43.30	63.90	57.93	46.20	41.91	0.76um [.000030in]	68	5390378-7
OBSOLETE	40.07	31.87	52.47	46.50	34.77	30.48	0.76um [.000030in]	50	5390378-5

THIS DRAWING IS A CONTROLLED DOCUMENT. UNLESS OTHERWISE SPECIFIED, DIMENSIONS ARE IN MILLIMETERS.

TYCO ELECTRONICS CORPORATION  
Harrisburg, Pa 17105-3008

RECEPTACLE ASSEMBLY,  
0.64(.025) CENTERLINE,  
AMPLITUDE 1.27(.050) SERIES

DATE: 10/07/09 DRAWING NO: A100779 (C)=5390378

CUSTOMER DRAWING