

4

3

2

1

THIS DRAWING IS UNPUBLISHED. RELEASED FOR PUBLICATION.
 © COPYRIGHT BY TYCO ELECTRONICS CORPORATION. ALL INTERNATIONAL RIGHTS RESERVED.

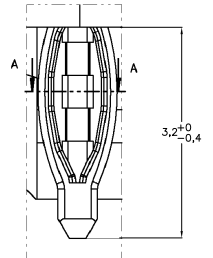
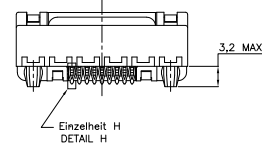
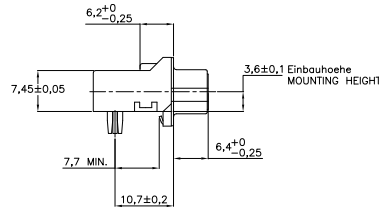
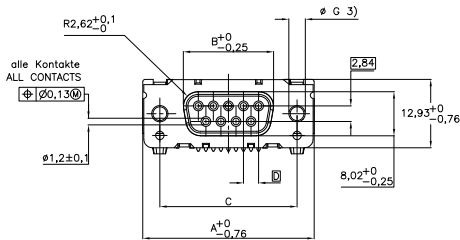
LOC	DIST	REVISIONS		
F	LNK	DESCRIPTION	DATE	BY APD
A3		SR10-0524-02	20-12-02	KV
A4		ECR-08-024220	15-10-08	AEG/KMA
A5		REVISED PER ECO-09-024927	10NOV09	KK/AEG

NOTES:

- 1 ACCORDING TO DIN 41652 P.2 AND P.4
- 2 ACCORDING TO DIN 41611 P.5, DIN IEC 352-5; INCL. PLATING
- 3 TORQUERETENTION >=70 Ncm
- 4 PLATED-THROUGH HOLE ; INCL. PLATING
 SUITABLE FOR COMPLIANT PRESS-IN ZONE
 PCB-PLATING-THROUGH : 5...15µm Sn OR SnPb OVER MIN. 25µm Cu
 DRILLED HOLES : Ø1,15 ±0,025 AND Ø3,15 ±0,025

- 1 Nach DIN 41652 T.2 und T.4
- 2 Nach DIN 41611 T.5, DIN IEC 352-5; incl. Oberflächenbehandlung
- 3 Verdrehsicherheit >= 70 Ncm
- 4 Durchmetallisierte Löcher ; incl. Oberflächenbehandlung:
 Geeignet für elastische Einpreßzonen
 Metallisierung des Loches: 5...15µm Sn oder SnPb über min 25µm Cu
 Bohrdurchmesser: Ø1,15 ± 0,025 und Ø3,15 ± 0,025

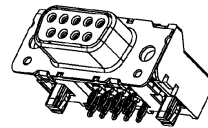
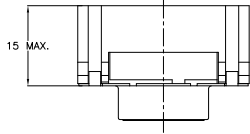
OBSELETE PARTS: OBSELETE CIS STREAMLINING PER D.RENAUD/D.SINISI



Einzelheit H (20:1)
DETAIL H (20:1)



Schnitt A-A (20:1)
SECTION A-A (20:1)



Sachnr./ORDERCODE V23529-S1****-	Polzahl n CONTACTS N	Maß / DIMENSION			
		A	B	C	D
B*09	09	31,19	16,46	25,00 ^{+0,13} / _{-0,13}	2,74
B*15	15	39,52	24,79	33,30 ^{+0,15} / _{-0,15}	2,74
B*25	25	53,42	38,50	47,04 ^{+0,13} / _{-0,13}	2,76
B*37	37	69,70	54,96	63,50 ^{+0,13} / _{-0,13}	2,76

Anforderungsstufe 1)
PERFORMANCE LEVEL 1)

Sachnr./ORDERCODE	Maß / DIMENSION
V23529-	Ø G
S1*02-B***	M3
S1*03-B***	4-40UNC

Dargestellt wird die 9-polige Ausführung V23529-S1202-C209
ON THE DRAWING : THE 9 POLE VERSION V23529-S1202-C209

THIS DRAWING IS A CONTROLLED DOCUMENT. DIM: STERCKX 16JAN98
 OK: --
 ZPDC: --
 ECOS D1: --
 PRODUCT SPEC: --
 APPLICATION SPEC: --
 WEIGHT: --

Ytyco Electronics Corporation
 's-Hertogenbosch, Nederland

Sub-D 90° abgewinkelt Eurostyle Einpreß Buchsenleiste
 D-SUB 90° ANGLED EUROSTYLE PRESS FIT SOCKET
 OLD FN: V23529-S****-B****-7427

SIZE: A2 00779 C=1-1393482-2
 SCALE: NTS SHEET: 1 of 3 REV: A5

1:1



4

3

2

1

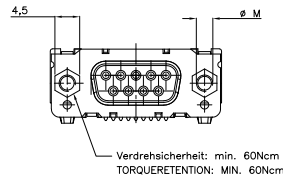
THIS DRAWING IS UNPUBLISHED. RELEASED FOR PUBLICATION.
 © COPYRIGHT BY TYCO ELECTRONICS CORPORATION. ALL INTERNATIONAL RIGHTS RESERVED.

LOC	DIST	REVISIONS				
H		F	LR	DATE	DRN	APD
		-	-	SEE SHEET 1	-	-

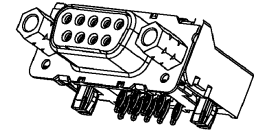
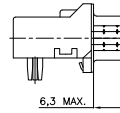
**Verpreßhinweis
PRESS-IN INFORMATION**

- Einpressen über Kunststoff mit :
- 2-Hub-Press 60kN : 1-1393491-3
 - Einpreßmaschine 60/100kN : 4-1393488-2
- Zu verwendenden Werkzeuge :
- Drückstück : 1393490-6
 - Amboß : 3-1393489-5
- Einstellhöhe : Abstand zwischen LP und angedrucktem Stempel : 7,45 bis 7,6mm
- PRESSING IN VIA THE PLASTIC BODY :
- 2-STROKE PRESS 60kN : 1-1393491-3
 - PRESS-FIT MACHINE 60/100kN : 4-1393488-2
- PRESSING-IN TOOLS :
- COMPRESSION TOOL : 1393490-6
 - ANVIL : 3-1393489-5
- SET-UP HEIGHTS : DISTANCE BETWEEN PCB AND COMPRESSION TOOL : 7,45 TO 7,6 mm

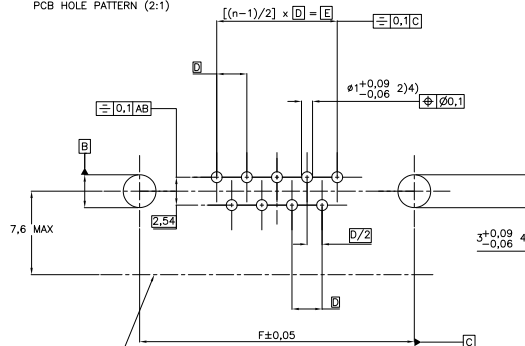
Ausführung mit Gewindebolzen
 VERSION WITH STUDBOLT
 V23529-S1*04/S1*05-B***



Sachnr./ORDERCODE	Maß / DIMENSION
V23529-	ø M
S1*04-B***	M3
S1*05-B***	4-40UNC



Leiterplattenbohrung (2:1)
 PCB HOLE PATTERN (2:1)



Kantenseite der Leiterplatte
 PCB-BOARDER

Erläuterungen siehe Seite 1
 REMARKS SEE PAGE 1

Sachnr./ORDERCODE	Polzahl n CONTACTS N	Maß / DIMENSION		
		D	E	F
B*09	09	2,74	10,96	25,00
B*15	15	2,74	19,18	33,30
B*25	25	2,76	33,12	47,04
B*37	37	2,76	49,68	63,50

Anforderungsstufe 1)
 PERFORMANCE LEVEL 1)

THIS DRAWING IS A CONTROLLED DOCUMENT. DRN: STERCKX, 16JAN98, Tyco Electronics Corporation, 's-Hertogenbosch, Nederland.

DIMENSIONS: mm	TOLERANCES UNLESS OTHERWISE SPECIFIED:	APPC: ECOS-D1	NAME: Sub-D 90° abgewinkelt Eurostyle Einpreß Buchsenleiste
0 PLG ±	1 PLG ±	2 PLG ±	3 PLG ±
4 PLG ±	ANGLES ±	MATERIAL: FINISH	HEIGHT: -

PRODUCT SPEC: D-SUB 90° ANGLED EUROSTYLE PRESS FIT SOCKET
 OLD PN: V23529-S***-B***-7427
 APPLICATION SPEC: SIZE: A2, 00779, C=1-1393482-2
 CUSTOMER DRAWING, SCALE: NTS, SHEET: 2 of 3, REV: A5

1-1393482-2

A

4

3

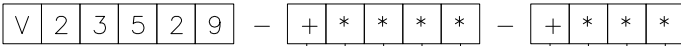
2

1

THIS DRAWING IS UNPUBLISHED. RELEASED FOR PUBLICATION.
 © COPYRIGHT BY TYCO ELECTRONICS CORPORATION. ALL INTERNATIONAL RIGHTS RESERVED.

LOC	DIST	REVISONS	DATE	BY	APPD
H	-	F LK			
		SEE SHEET 1			

SUB-D 90° abgewinkelt Einpreß // D-SUB 90° PRESS-IN



EINBAUHÖHE // MOUNTING HEIGHT
 S = Eurostylebauhöhe 3.6mm // EUROSTYLE 3.6 mm

AUFBAU // CONFIGURATION
 1 = isoliert // INSULATED
 2 = geschirmt 1) // SHIELDED 1)

BESCHRIFTUNG // MARKING
 1 = TE // TE
 2 = Neutral // NEUTRAL
 3 = Sonderbeschriftung A // SPECIAL MARKING A
 4 = Sonderbeschriftung B // SPECIAL MARKING B
 5 = Sonderbeschriftung C // SPECIAL MARKING C

ANSCHLUBAUFÜHRUNG // CONTACT TYPE
 0,1 = EP-Stiel 3.2 mm // PRESS-IN PIN 3.2 mm LONG

BEFESTIGUNG Steckseite/Leiterplattenseite // MOUNTING CONNECTOR/PCB
 01 = Loch Ø3 / ohne Massekontakt 1) // HOLE Ø3 / WITHOUT GROUNDING
 02 = Gewinde M3 / mit Massekontakt // THREAD M3 / WITH GROUNDING
 03 = Gewinde 4-40 UNC / mit Massekontakt // THREAD 4-40 UNC 1 WITH GROUNDING
 04 = Gewindehülzen M3 / mit Massekontakt // STUDBOLT SREWLOCK M3 / WITH GROUNDING
 05 = Gewindebolzen 4-40 UNC / mit Massekontakt // STUDBOLT SREWLOCK 4-40 UNC / WITH GROUNDING 0 UNC /

STECKERPOLZAHN // NO OF CONTACTS
 09 = 9-polig // 9-CONTACT
 15 = 15-polig // 15-CONTACT
 25 = 25-polig // 25-CONTACT
 37 = 37-polig // 37-CONTACT

ANFORDERUNGSSTUFE // PERFORMANCE LEVEL
 2 = Anf. II // PL II

STECKERART //CONNECTOR TYPE
 B = Buchsenleiste // FEMALE CONNECTOR

ACTIVE PART NUMBERS. CONTACT TYCO ELECTRONICS FOR OTHER CONFIGURATION AVAILABILITY

OLD PART NUMBER	TE PART NUMBER
V23529-S1102-B209	1-1393482-2
V23529-S1102-B215	1-1393482-3
V23529-S1102-B225	9-1393487-2
V23529-S1102-B237	2-1393497-9
V23529-S1103-B209	1-1393482-6
V23529-S1103-B215	1-1393482-8
V23529-S1103-B225	3-1392010-9
V23529-S1103-B237	4-1392010-0
V23529-S1104-B209	2-1393482-0
V23529-S1105-B209	2-1393482-2
V23529-S1105-B215	2-1393482-4
V23529-S1105-B225	2-1393482-6
V23529-S1105-B237	2-1393482-8

△ OBSOLETE

1) in Vorbereitung // IN PREPARATION

THIS DRAWING IS A CONTROLLED DOCUMENT. DIM: STERCKX 16JAN98

TYCO Electronics Tyco Electronics Corporation 's-Hertogenbosch, Nederland

DIMENSIONS: mm	TOLERANCES UNLESS OTHERWISE SPECIFIED:	APPC	NAME
0 P.L.C. ±	0.15	ECOS D1	Sub-D 90° abgewinkelt Eurostyle Einpreß Buchsenleiste
1 P.L.C. ±	0.25	PRODUCT SPEC	D-SUB 90° ANGLED EUROSTYLE PRESS FIT SOCKET
2 P.L.C. ±	0.38	APPLICATION SPEC	OLD PN: V23529-S****-B****-7427
3 P.L.C. ±	0.51	WEIGHT	SIZE ONE CODE DRAWING NO
4 P.L.C. ±	0.64	RESTRICTED TO	A2 00779 ©=1-1393482-2
ANGLES	±	CUSTOMER DRAWING	SCALE NTS SHEET 3 of 3 REV A5
FINISH			

1-1393482-2

A