

4

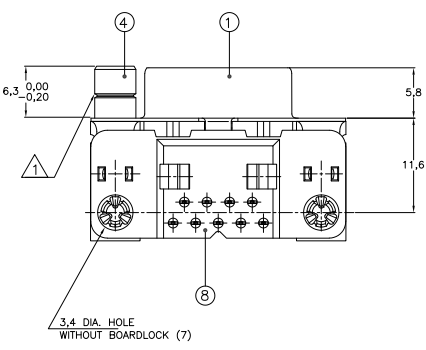
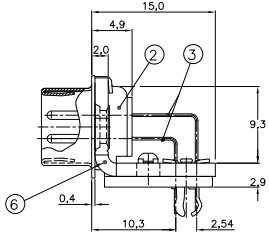
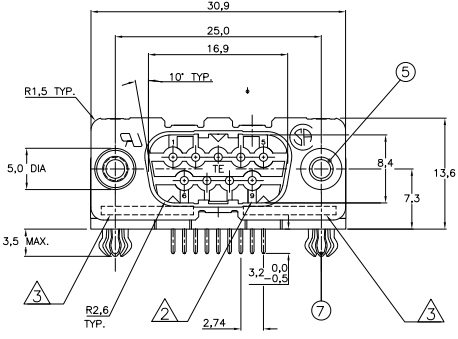
3

2

1

THIS DRAWING IS UNPUBLISHED. RELEASED FOR PUBLICATION
 © COPYRIGHT BY TYCO ELECTRONICS CORPORATION. ALL RIGHTS RESERVED.

LOC	DIST	REVISIONS					
H	-	F	LR	DESCRIPTION	DATE	BY	APPD
		F		EHC0-0061-04	07-04-04	JvdH	-
		G		ECR-06-016736	04-11-06	BSV	MK
		G1		ECR-10-013804	07-07-10	GSK	KMA



ACCESSORIES PREFIX	ITEM NR.	DESCRIPTION OF ACCESSORY	2	2	2	2	2	2	2
	5	3,1 DIA. INSERT	2	2	2	2	2	2	2
	5	INSERT WITH INNER THREAD 4-40 UNC	2	2	2	2	2	2	2
	5	INSERT WITH INNER THREAD M3	2	2	2	2	2	2	2
	4	FEMALE SCREWLOCK WITH 4-40 UNC	2	2	2	2	2	2	2
	4	FEMALE SCREWLOCK WITH M3	2	2	2	2	2	2	2
	7	BOARDLOCK	2	2	2	2	2	2	2

HOW TO ORDER

9 POS. -----> Z-338168-Y

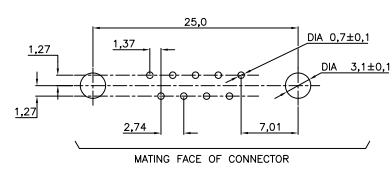
PREFIX FOR ACCESSORIES }
 BASIC PARTNR. }
 SUFFIX FOR PLATING }

PLATING SUFFIX	DESCRIPTION
	GOLD OVER NICKEL AS PER PERFORMANCE LEVEL 2 (DIN 41652)
-Y	SOLDERPART :2,5µm TIN OVER NICKEL
-	
-	

- 1 GROOVE INDICATES VERSION WITH 4-40 UNC INNER THREAD; WITHOUT GROOVE INDICATES VERSION WITH M3 INNER THREAD.
- 2 CAVITY IDENTIFICATION AT FRONT SIDE ONLY.
- 3 PARTNUMBER AND DATE CODE.
- 4 SHELL HAS 2x2 GROUNDING SPRINGS; PITCH IS 3,6 mm
- 5 AIR AND CREEPAGE DISTANCES ACCORDING TO DIN 41652

- ITEM NRS./MATERIAL :**
- 1 SHELL : BRIGHT TINPLATED STEEL
 - 2 HOUSING : GLASSFILLED POLYESTER, COLOR : BLACK
 - 3 CONTACTS : PH.BRONZE (PLATING : SEE TABLE ABOVE)
 - 4 FEMALE SCREWLOCK : TINPLATED STEEL (INNER THREAD 4-40 UNC OR M3)
 - 5 INSERT : TINPLATED STEEL (INNER THREAD 4-40 UNC OR M3 OR 3,1 DIA THRU-HOLE)
 - 6 BRACKET : TINPLATED STEEL
 - 7 BOARDLOCK : TINPLATED PHOSPHORBRONZE
 - 8 POSTALIGNMENT PLATE : GLASSFILLED NYLON. COLOR : BLACK

RECOMMENDED P.C. BOARD HOLE-LAYOUT



THIS DRAWING IS A CONTROLLED DOCUMENT. DIM D. KESSLER 18 JAN 99

DRW. W. SOOMERS
 DATE 18 JAN 99
 NAME Tyco Electronics
 Tyco Electronics Corporation
 s-Hertogenbosch, Netherlands.

HD-20 SIZE 1
 RIGHT ANGLE PLUG HEADER; MARK II+

SIZE CASE CODE DRAWING NO. RESTRICTED TO
 A2 00779 C=338168

CUSTOMER DRAWING SCALE NTS SHEET 1 OF 1 REV G1

AMP 1471-9 REV 31MM2000

338168