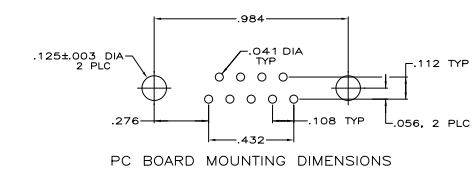
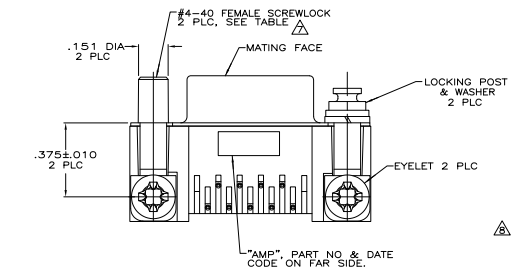
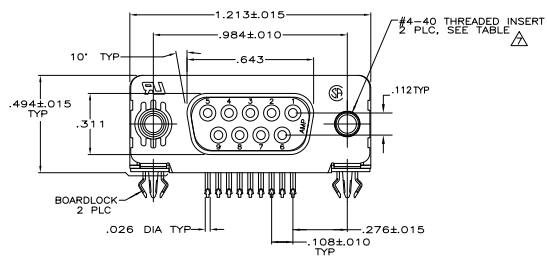


REV	DATE	DESCRIPTION	BY	CHK
00				
01		REVISED PER EDD-11-004835	11MR11	RK HMR



- CONNECTOR MATES WITH ANY 9 POSN PLUG IN AMPLIMITE® SERIES.
- MOLDED PARTS: FLAME RETARDANT 94V-0 RATED THERMOPLASTIC, BLACK; SHELL: STEEL PER ASTM A109; CONTACTS: PHOSPHOR BRONZE PER QQ-B-750; EYELETS: BRASS; SCREWLOCKS: ZINC; INSERTS: ZINC; BOARDLOCKS: COPPER ALLOY.
- SHELL: .000100 MIN TIN OR TIN-LEAD; CONTACTS: SEE TABLE; EYELETS: TIN; SCREWLOCKS: CLEAR CHROMATE; BOARDLOCKS: SEE TABLE; INSERTS: CLEAR CHROMATE.
- GOLD PLATING PER MIL-G-45204, NICKEL PLATING PER QQ-N-290, TIN PLATING PER MIL-T-10727.
- GOLD FLASH FOR A DISTANCE OF .100 MIN FROM MATING END, .000100-.000200 BRIGHT TIN OR BRIGHT TIN-LEAD ON TERMINATION END, ALL OVER .000050 NICKEL ON ENTIRE CONTACT.
- .000030 GOLD FOR A DISTANCE OF .100 MIN FROM MATING END, .000100-.000200 BRIGHT TIN OR BRIGHT TIN-LEAD ON TERMINATION END, ALL OVER .000050 NICKEL ON ENTIRE CONTACT.
- SCREWLOCKS & INSERTS WILL WITHSTAND 4 IN LBS TORQUE & 20 LBS PULL OUT FORCE FROM MATING FACE SIDE.
- DIMENSION APPLIES TO CENTER LINE OF CONTACTS.
- OBsolete PARTS: OBsolete CIS STREAMLINING PER D.RENAUD/D.SINISI

-	FEMALE SCREWLOCKS	TIN	7-747844-1
-	FEMALE SCREWLOCKS	TIN	7-747844-0
-	TRAY	TIN	6-747844-9
-	THREADED INSERTS	TIN	6-747844-8
-	THREADED INSERTS	TIN	6-747844-7
SUPSD BY 747844-4	TUBE	TIN-LEAD	6-747844-2
-	INSERT/LOCKING POST & WASHERS	TIN-LEAD	747844-8
-	FEMALE SCREWLOCKS	TIN-LEAD	747844-7
-	FEMALE SCREWLOCKS	TIN-LEAD	747844-6
-	FEMALE SCREWLOCKS	TIN-LEAD	747844-5
-	TRAY	TIN-LEAD	747844-4
-	THREADED INSERTS	TIN-LEAD	747844-3
-	THREADED INSERTS	TIN-LEAD	747844-2
SUPSD BY 747844-2	-	.125 DIA HOLES	747844-1
PACKAGING	MOUNTING HARDWARE	BOARDLOCK FINISH	CONTACT FINISH

THIS DRAWING IS A CONTROLLED DOCUMENT. DATE CHANGED: 15 JAN 81 BY: J. LONKER

TE Connectivity

RECEPTACLE ASSEMBLY, SIZE 1, RIGHT ANGLE, .318 SERIES, FRONT METAL SHELL, .026 DIA POSTS, BOARDLOCKS, AMPLIMITE® HD-20

114-40010

100779

CUSTOMER DRAWING