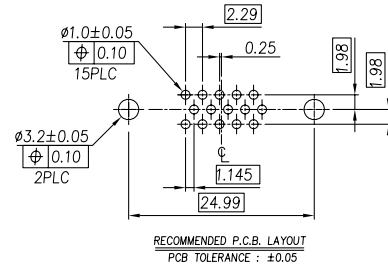
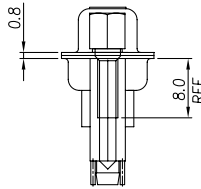
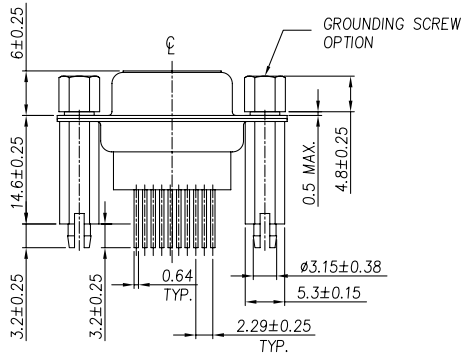
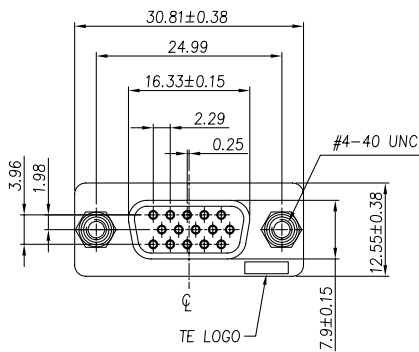


THIS DRAWING IS UNPUBLISHED. RELEASED FOR PUBLICATION AUG 2006.
 © COPYRIGHT 2009 BY TYCO ELECTRONICS CORPORATION. ALL RIGHTS RESERVED.

LOC	DIST	REVISIONS				
P	LTR	DESCRIPTION	DATE	DWN	APVD	
DW	-	A	REVISED (ECR-09-010844), OBSOLETE -2	15MAY09	SC	WK

- NOTES:
- MATERIAL:
 HOUSING : THERMOPLASTIC, UL94V-0, BLACK COLOR
 CONTACTS : BRASS
 GROUNDING SCREW : BRASS
 SHELL : STEEL
 - FINISH :
 CONTACT : GOLD FLASH ON CONTACT AREA
 100 μ" MIN. TIN PLATING ON SOLDERTAILS
 40 μ" MIN. NICKEL UNDERPLATING OVERALL
 SHELL : 40 μ" MIN. NICKEL PLATING
 GROUNDING SCREW : 60 μ" MIN. TIN PLATING
 40 μ" MIN. NICKEL UNDERPLATED OVERALL
 - QUALIFICATION TEST REPORT : 501-57590
 - RECOMMENDED PCB THICKNESS : 1.6mm
 - APPLY TO WAVE SOLDERING PROCESS



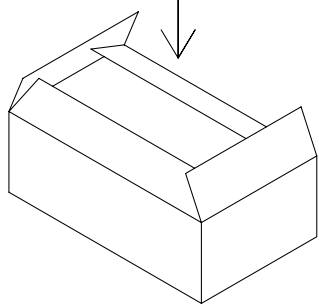
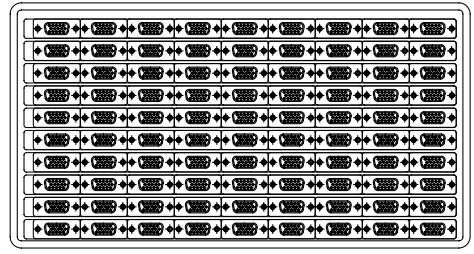
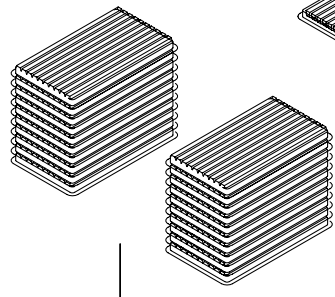
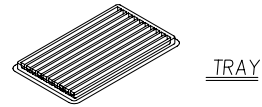
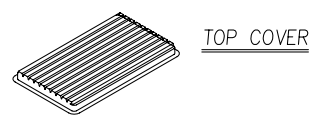
OBSOLETE	W/O	1734708-2
	W/	1734708-1
	SCREW	PART NUMBER

THIS DRAWING IS A CONTROLLED DOCUMENT.		DWN S. CHIEN 15MAY2009	Tyco Electronics Corporation Taipei, Taiwan	
DIMENSIONS: MM		CHK S. CHIEN 15MAY2009	NAME	
TOLERANCES UNLESS OTHERWISE SPECIFIED: 0 PLC ± 0.5 1 PLC ± 0.3 2 PLC ± 0.2 3 PLC ± - 4 PLC ANGLES ± 3°		APVD W. KODAMA 15MAY2009	PRODUCT SPEC 108-57517	
MATERIAL		APPLICATION SPEC 501-57590	SIZE A3	CAGE CODE 00779
SEE NOTE		FINISH	DRAWING NO C=1734708	RESTRICTED TO -
		WEIGHT - GRAMS	CUSTOMER DRAWING	
		SCALE	SHEET 1 of 2	REV A

THIS DRAWING IS UNPUBLISHED. RELEASED FOR PUBLICATION AUG 2006.
 © COPYRIGHT 2009 BY TYCO ELECTRONICS CORPORATION. ALL RIGHTS RESERVED.

LOC	DIST	REVISIONS			
P	LTR	DESCRIPTION	DATE	DWN	APVD
		SEE SHEET 1.			

- NOTES :
- DIMENSION :
 TRAY : L=310, W=230, H=22
 SHIPPING BOX : L=470, W=320, H=230
 - QUANTITY :
 90 PCS/TRAY
 18 TRAYS/SHIPPING BOX (=1620 PCS)
 - WEIGHT :
 N.W. : 15.5 KG/ SHIPPING BOX
 G.W. : 17.5 KG/ SHIPPING BOX



THIS DRAWING IS A CONTROLLED DOCUMENT.		DWN	Tyco Electronics Corporation Taipei, Taiwan	
DIMENSIONS: MM		CHK	NAME	
TOLERANCES UNLESS OTHERWISE SPECIFIED: 0 PLC ± - 1 PLC ± - 2 PLC ± - 3 PLC ± - 4 PLC ± - ANGLES ± -		APVD	HD-22, D-Sub, RCPT, V/T, 15PIN	
MATERIAL		PRODUCT SPEC	SIZE	RESTRICTED TO
FINISH		APPLICATION SPEC	CAGE CODE	DRAWING NO
		WEIGHT	A3 00779	©=1734708
		CUSTOMER DRAWING	SCALE	SHEET 2 of 2
				REV A