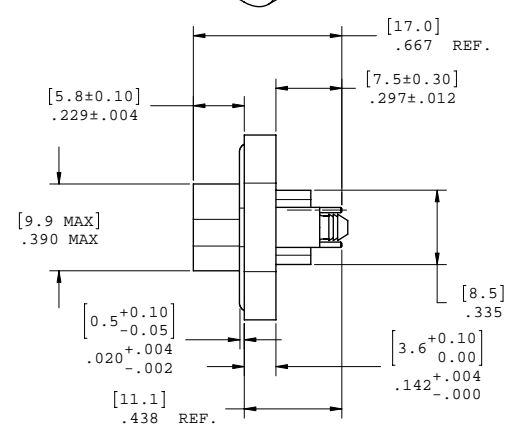
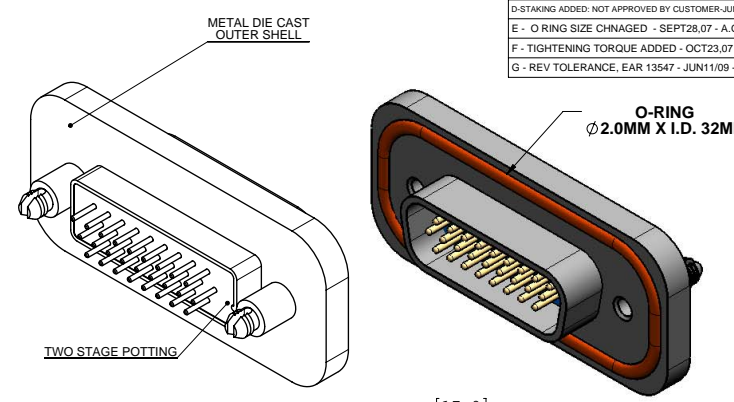
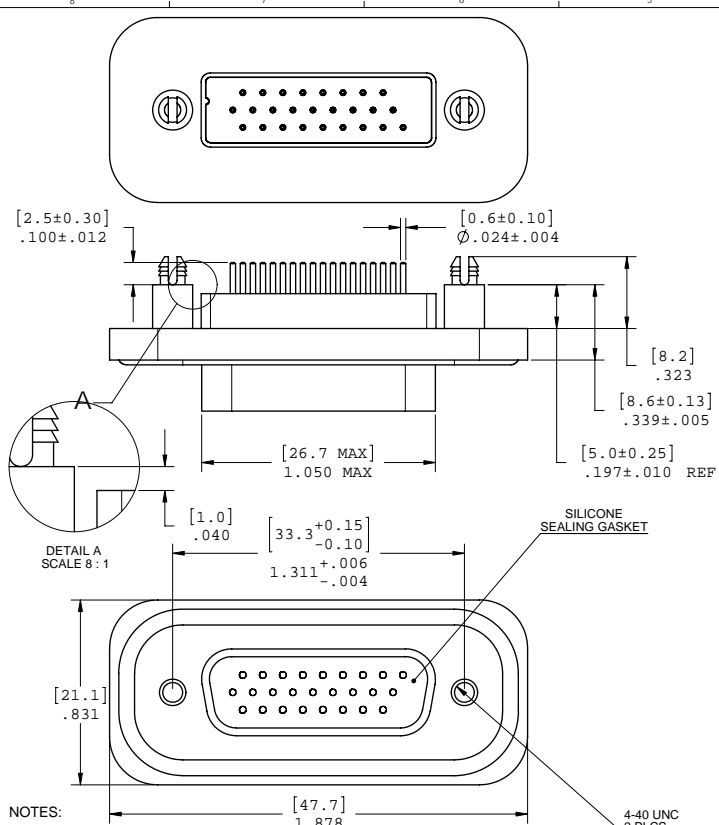


REV	DESCRIP	DATE	APPRVD
A	UPDATED NOTES	2006/06/16	- YK.
B	CHG SOLDER TAILS	2006/07/18	- YK.
C	UPDATED MATERIALS	2006/08/18	- YK.
D	STAKING ADDED: NOT APPROVED BY CUSTOMER	JUNE28,07	- A.G.
E	O RING SIZE CHNAGED	SEPT28,07	- A.G.
F	TIGHTENING TORQUE ADDED	OCT23,07	- A.G.
G	REV TOLERANCE, EAR	13547 - JUN11/09	- K.L.



- NOTES:
- MATERIAL:
 - SHELL: ZINC ALLOY 50 MICRO INCH MINIMUM NICKEL PLATING.
 - CONTACTS: COPPER ALLOY 30 MICRO INCH GOLD OVER 50 MICRO INCH NICKEL PLATING.
 - INSULATOR: THERMOPLASTIC POLYESTER RESIN (D5M) 94V-0 FLAMMABILITY RATING.
 - GASKETS: SILICONE RUBBER S7001R, 70 DUROMETER.
 - SEALING COMPOUND: STYCAST 2651 WITH CATALYST 11
 - FEATURES: SEALED CONNECTOR IN THE MATED AND UNMATED CONDITIONS.
 - OPERATING TEMPERATURE: -40°C TO +105°C.
 - ENVIRONMENT PERFORMANCE: IP67.
 - PART IS RoHS COMPLIANT.
 - REAR SEAL TO WITHSTAND TEMPERATURE EXPOSURE OF SOLDER BATH 265°C FOR 8 SEC & SOLDER PREHEAT 150°C FOR 180 SEC.
 - SEALED TO WITHSTAND PRESSURE UP TO 5 PSI AFTER HIGH TEMPERATURE EXPOSURE.
 - RECOMMENDED TORQUE FOR SCREW TIGHTENING:
 - STEEL SCREW WITH MORE THAN .090" OF THREAD ENGAGEMENT: 4.0 TO 5.75 IN-LBS.
 - BRASS SCREW: 3.1 TO 4.5 IN-LBS.

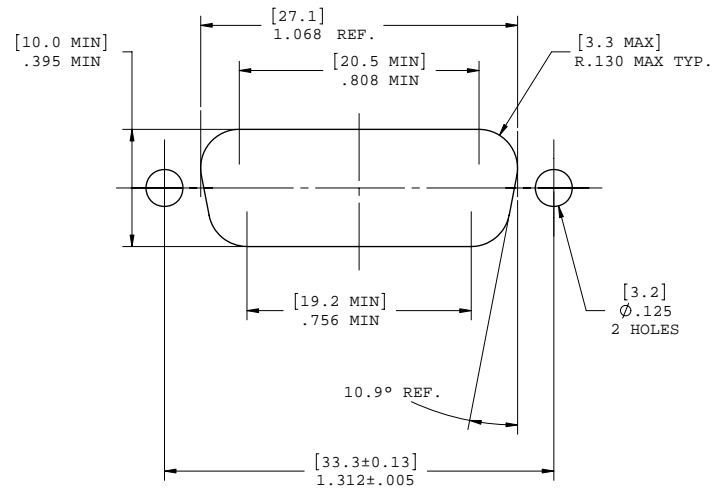
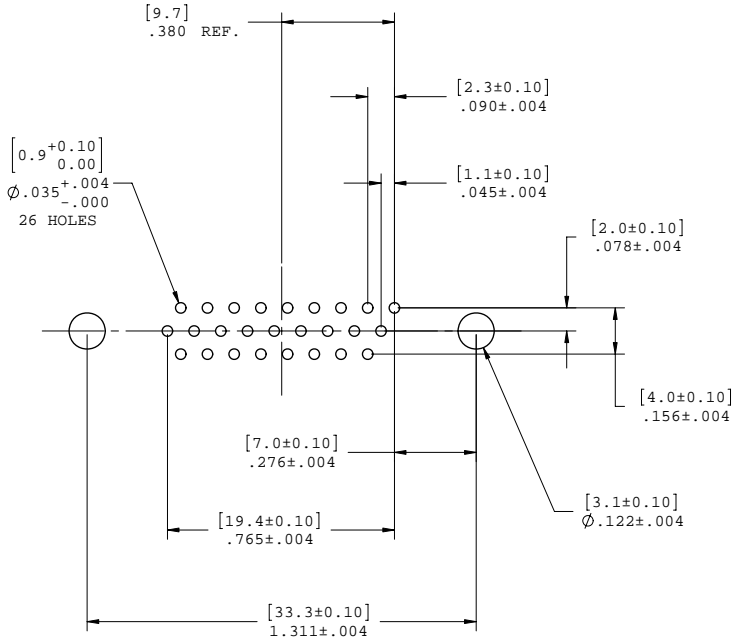


AMPHENOL PART NUMBER: MDB-A26PE-860

UNLESS OTHERWISE SPECIFIED DIMENSIONS ARE IN MILLIMETER TOLERANCES ARE:		APPROVALS	DATE	Amphenol Canada Corp.		
DECIMALS	ANGLES	DRAWN				
XX ±.10	±1°	Y.KUZYK	2006/07/24	TITLE MDB SERIES RUGGED D-SUB CONNECTOR, 26 SIZE HIGH DENSITY PIN, VERTICAL PCB TAIL, RoHS COMPLIANT		
X ±.25		DESIGNED				
MATERIAL AND FINISH		CHECKED				
REF.		QA APP'D				
CODE IDENT. NO.		IE APP'D		SIZE	DWG. NO.	REV.
		DWG APP'D	2006/07/24	C	P-MDB-A26PE-860	G
				SCALE	PROJECT	SHEET
				1:0.333333	MDB-A26	1 OF 2

DO NOT SCALE DRAWING
THIS DOCUMENT CONTAINS PROPRIETARY INFORMATION AND SUCH INFORMATION MAY NOT BE DISCLOSED TO OTHERS FOR ANY PURPOSE OR USED FOR MANUFACTURING PURPOSES WITHOUT PERMISSION FROM AMPHENOL CANADA CORP.

REV - DESCRIPT - DATE - APPRVD
SEE PAGE 1



PCB LAYOUT

EXISTING PANEL CUTOUT



UNLESS OTHERWISE SPECIFIED DIMENSIONS ARE IN MILLIMETER TOLERANCES ARE:		APPROVALS	DATE	Amphenol Canada Corp.	
DECIMALS	ANGLES	DRAWN	2006/07/24	TITLE MDB SERIES RUGGED D-SUB CONNECTOR, 26 SIZE HIGH DENSITY PIN, VERTICAL PCB TAIL, RoHS COMPLIANT	
XX ±.10	±1°	DESIGNED	2006/07/24		
X ±.25		CHECKED			
		QA APP'D			
MATERIAL AND FINISH		IE APP'D		SIZE	DWG. NO.
REF.		DWG APP'D		C	P-MDB-A26PE-860
CODE IDENT. NO.			2006/07/24	SCALE	PROJECT
				4:1	MDB-A26
					SHEET
					2 OF 2
					REV.
					G

DO NOT SCALE DRAWING
THIS DOCUMENT CONTAINS PROPRIETARY INFORMATION AND SUCH INFORMATION MAY NOT BE DISCLOSED TO OTHERS FOR ANY PURPOSE OR USED FOR MANUFACTURING PURPOSES WITHOUT PERMISSION FROM AMPHENOL CANADA CORP.

