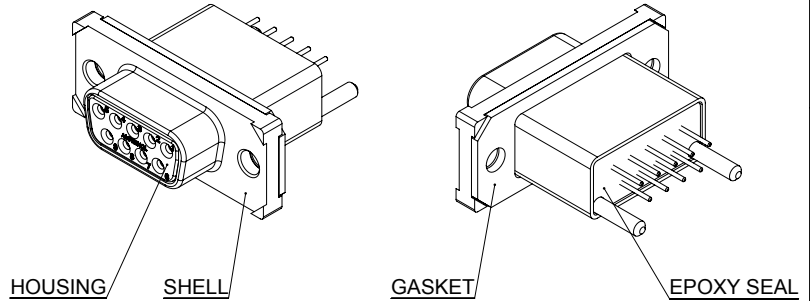
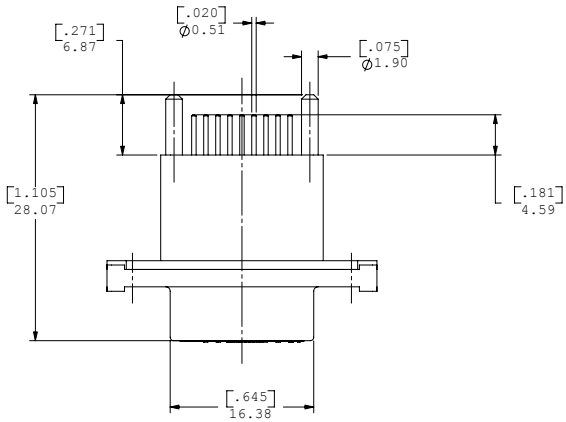
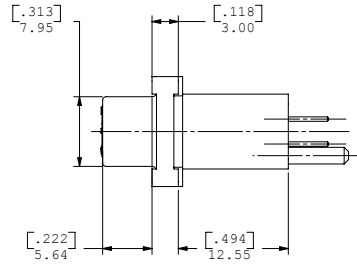
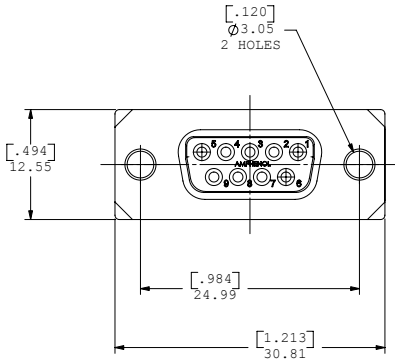


REV	DESCRIPT	DATE	APPRVD



MDB-E09SA-765 IS SHOWN



NOTES:

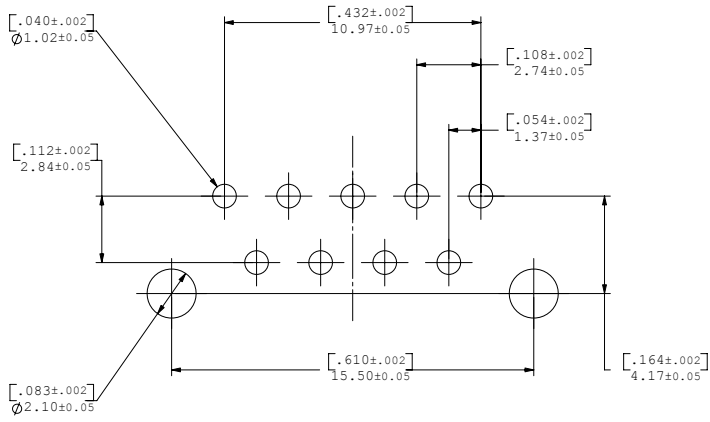
1. MATERIAL:
 - SHELL: ZINC ALLOY WITH 50 MICRO INCH MINIMUM NICKEL PLATING,
 - CONTACTS: COPPER ALLOY 50 MICRO INCH GOLD OVER 50 MICRO INCH NICKEL PLATING,
 - HOUSING: THERMOPLASTIC POLYESTER RESIN,
 - GASKET: SILICONE RUBBER,
 - SCREWS: STAINLESS STEEL,
 - DUST COVER: SILICONE RUBBER.
2. FEATURES: SEALED CONNECTOR IN THE MATED AND UNMATED CONDITIONS.
3. OPERATING TEMPERATURE: -40°C TO +105°C.
4. ENVIRONMENT PERFORMANCE: IP67.
5. CONNECTOR IS ROHS COMPLIANT PER EU DIRECTIVE 2002/95/EC AND AMENDMENTS.
6. PART IS UL94V-0 FLAMMABILITY COMPLIANT.
7. PART NUMBER FOR ORDER:
 - MDB-E09SA-760 - WITH DUST COVER AND SCREWS,
 - MDB-E09SA-765 - NO DUST COVER AND SCREWS.



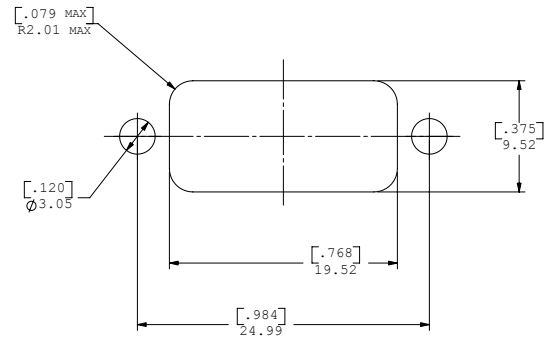
UNLESS OTHERWISE SPECIFIED DIMENSIONS ARE IN MILLIMETER TOLERANCES ARE: DECIMALS .XX ± .10 .X ± .25 ANGLES ± 1°	APPROVALS	DATE	Amphenol Canada Corp.					
	DRAWN S.SEMENOV	OCT02/06						
	DESIGNED S.SEMENOV	OCT02/06	TITLE	RUGGED 9 SOCKET, D-SUB CONNECTOR, VERTICAL MOUNT				
	CHECKED		SIZE	C				
MATERIAL AND FINISH	QA APP'D		DWG. NO.	P-MDB-E09SA-76X	REV	2B		
REF.	IE APP'D		SCALE	3:1	PROJECT	MDB	SHEET	1 OF 2
CODE IDENT. NO.	DWG APP'D A.GREEN	OCT02/06						

DO NOT SCALE DRAWING
THIS DOCUMENT CONTAINS PROPRIETARY INFORMATION AND SUCH INFORMATION MAY NOT BE DISCLOSED TO OTHERS FOR ANY PURPOSE OR USED FOR MANUFACTURING PURPOSES WITHOUT PERMISSION FROM AMPHENOL CANADA CORP.

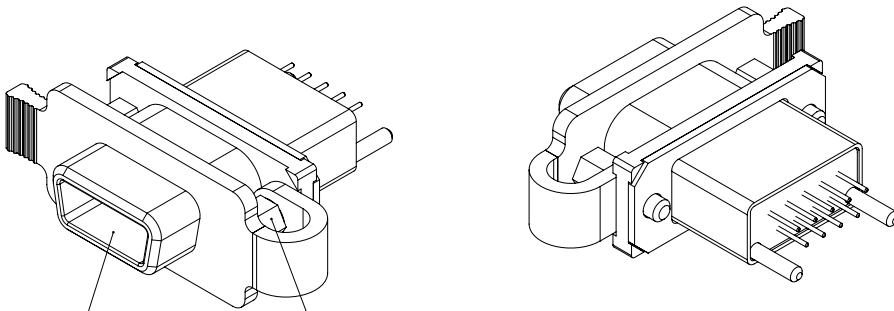
REV	DESCRIPT	DATE	APPRVD



RECOMMENDED P.C.B. LAYOUT



RECOMMENDED PANEL CUTOUT DIMENSIONS FOR REFERENCE ONLY



DUST COVER

SCREW

MDB-E09SA-760 IS SHOWN

**FOR MORE INFORMATION ABOUT DUST COVER
SEE DRAWING MDB-E09SA-007**



UNLESS OTHERWISE SPECIFIED DIMENSIONS ARE IN MILLIMETER TOLERANCES ARE:		APPROVALS	DATE	Amphenol Canada Corp.	
DECIMALS	ANGLES	DRAWN	OCT02/06	TITLE RUGGED 9 SOKET, D-SUB CONNECTOR, VERTICAL MOUNT	
XX ±.10	± 1°	S.SEMENOV	OCT02/06		
X ±.25		DESIGNED			
		S.SEMENOV			
MATERIAL AND FINISH		CHECKED		SIZE	C
REF.		QA APP'D		DWG. NO.	P-MDB-E09SA-76X
CODE IDENT. NO.		IE APP'D		SCALE	3:1
		DWG APP'D	OCT02/06	PROJECT	MDB
		A.GREEN		SHEET	2 OF 2

DO NOT SCALE DRAWING
THIS DOCUMENT CONTAINS PROPRIETARY INFORMATION AND SUCH INFORMATION MAY NOT BE DISCLOSED TO OTHERS FOR ANY PURPOSE OR USED FOR MANUFACTURING PURPOSES WITHOUT PERMISSION FROM AMPHENOL CANADA CORP.