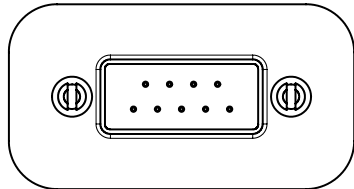
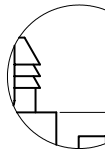
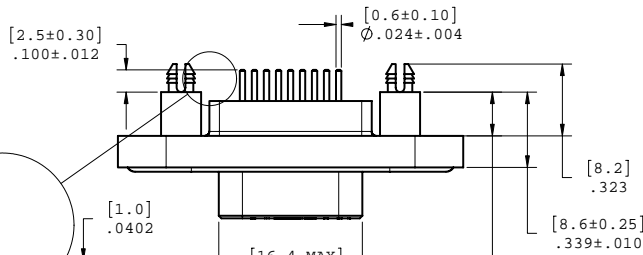
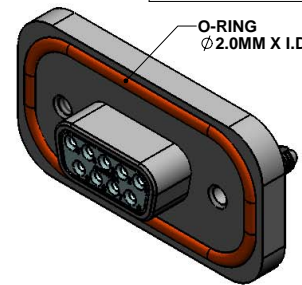
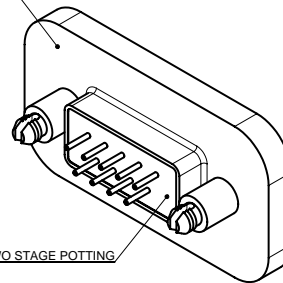


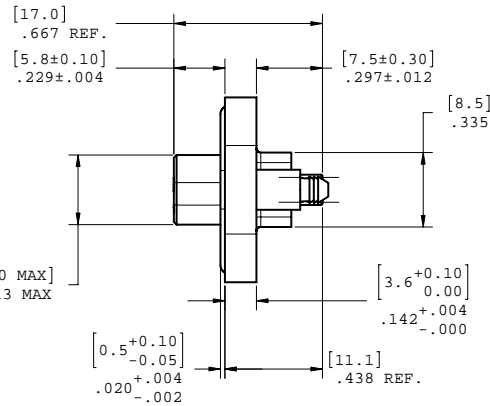
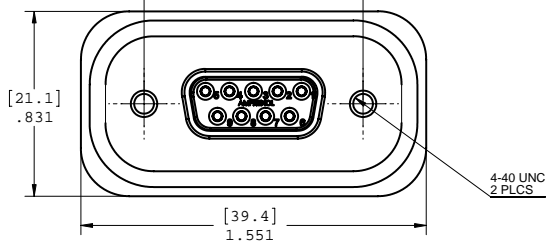
REV - DESCRIPT - DATE - APPRVD
A - UPDATED NOTES - 2006/06/16 - YK.
B - CHG SOLDER TAIL - 2006/07/19 - YK.
C - UPDATED MATERIALS - 2006/08/18 - YK.
D - STAKING ADDED: NOT APPROVED BY CUSTOMER - MAY 23,07
E - O-RING SIZE CHANGED - SEPT28.07 - A.G.
F - TIGHTENING TORQUE ADDED - OCT23,07 - A.G.



METAL DIE CAST OUTER SHELL



DETAIL A
SCALE 8:1



NOTES:

- MATERIAL:
 - SHELL: ZINC ALLOY 50 MICRO INCH MINIMUM NICKEL PLATING.
 - CONTACTS: COPPER ALLOY 30 MICRO INCH GOLD OVER 50 MICRO INCH NICKEL PLATING.
 - INSULATOR: THERMOPLASTIC POLYESTER RESIN (DSM) 94V-0 FLAMMABILITY RATING.
 - GASKETS: SILICONE RUBBER S7001R, 70 DUROMETER.
 - SEALING COMPOUND: STYCAST 2651 WITH CATALYST 11
- FEATURES: SEALED CONNECTOR IN THE MATED AND UNMATED CONDITIONS.
- OPERATING TEMPERATURE: -40°C TO +105°C.
- ENVIRONMENT PERFORMANCE: IP67.
- PART IS RoHS COMPLIANT.
- REAR SEAL TO WITHSTAND TEMPERATURE EXPOSURE OF SOLDER BATH 265°C FOR 8 SEC & SOLDER PREHEAT 150°C FOR 180 SEC.
- SEALED TO WITHSTAND PRESSURE UP TO 5 PSI AFTER HIGH TEMPERATURE EXPOSURE.
- RECOMMENDED TORQUE FOR SCREW TIGHTENING:
 - STEEL SCREW WITH MORE THAN .090" THREAD ENGAGEMENT: 4.0 TO 5.75 INCH-LBS
 - BRASS SCREW: 3.1 TO 4.5 INCH-LBS.

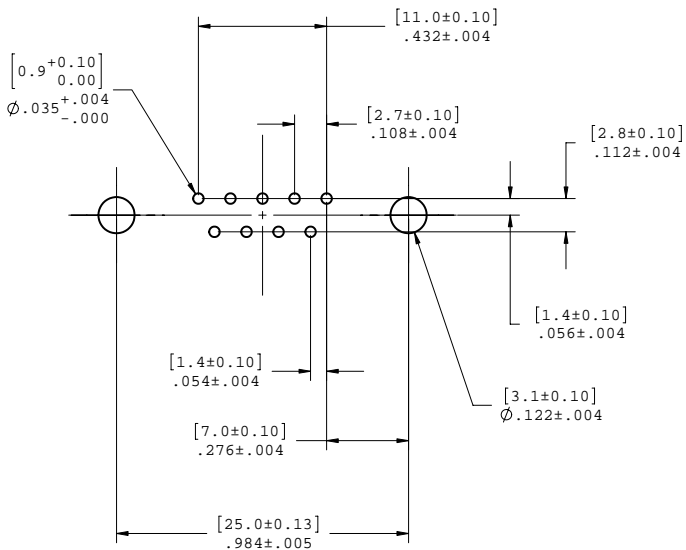
AMPHENOL PART NUMBER: MDB-E09SE-860



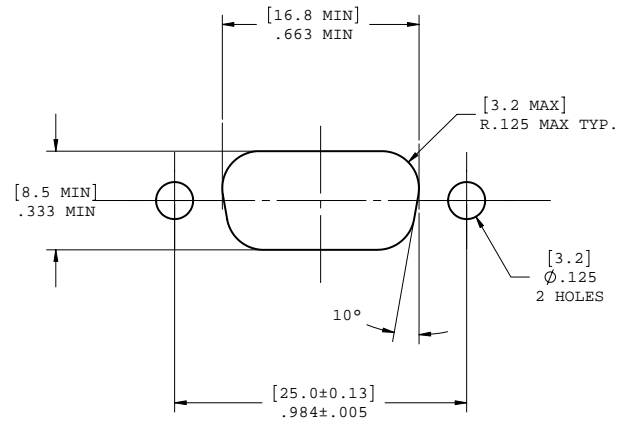
UNLESS OTHERWISE SPECIFIED DIMENSIONS ARE IN MILLIMETER TOLERANCES ARE:		APPROVALS	DATE	Amphenol Canada Corp.
DECIMALS XX ±.10 X ±.25	ANGLES ±1°	DRAWN Y.KUZYK	2006/07/24	
MATERIAL AND FINISH		DESIGNED S.SEMENOV	2006/07/24	TITLE
REF.		CHECKED		MDB 9 SOCKETS CONNECTOR
CODE IDENT. NO.		QA APP'D		SIZE C
		IE APP'D		DWG. NO. P-MDB-E09SE-860
		DWG APP'D	2006/07/24	REV. F
				SCALE 3:1
				PROJECT MDB
				SHEET 1 OF 2

DO NOT SCALE DRAWING
THIS DOCUMENT CONTAINS PROPRIETARY INFORMATION AND SUCH INFORMATION MAY NOT BE DISCLOSED TO OTHERS FOR ANY PURPOSE OR USED FOR MANUFACTURING PURPOSES WITHOUT PERMISSION FROM AMPHENOL CANADA CORP.

REV - DESCRIPT - DATE - APPRVD
SEE PAGE 1



PCB LAYOUT



RECOMMENDED PANEL CUTOUT



UNLESS OTHERWISE SPECIFIED DIMENSIONS ARE IN MILLIMETER TOLERANCES ARE: DECIMALS .XX ±.10 .X ±.25 ANGLES ±1°	APPROVALS	DATE	Amphenol Canada Corp.		
	DRAWN Y.KUZYK	2006/07/24			
	DESIGNED S.SEMENOV	2006/07/24	TITLE MDB 9 SOCKETS CONNECTOR		
	CHECKED				
MATERIAL AND FINISH			SIZE C	DWG. NO. P-MDB-E09SE-860	REV. F
REF.	IE APPD		SCALE 4:1	PROJECT MDB	SHEET 2 OF 2
CODE IDENT. NO.	DWG APPD	2006/07/24			

DO NOT SCALE DRAWING
THIS DOCUMENT CONTAINS PROPRIETARY INFORMATION AND SUCH INFORMATION MAY NOT BE DISCLOSED TO OTHERS FOR ANY PURPOSE OR USED FOR MANUFACTURING PURPOSES WITHOUT PERMISSION FROM AMPHENOL CANADA CORP.

