

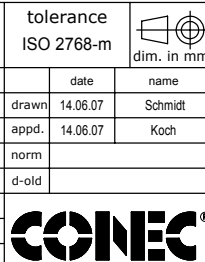
**NOTES:**

1. METALSHELLS: STEEL; min. 315µin TIN over 40-80µin NICKEL
2. INSULATORS: PBT GF UL 94 V-0; GREEN
3. HIGH POWER CONTACTS 40A: COPPER ALLOY  
PLATING MATING AREA: 30µin HARD GOLD over min. 50µin NICKEL  
PLATING TERMINATION SIDE: 160-240µin TIN over 80µin NICKEL  
MALE CONTACT ON POS. A1 and A2
4. SIGNAL CONTACTS: COPPER ALLOY; 7,5A nominal  
PLATING MATING AREA: 30µin HARD GOLD over min. 50µin NICKEL  
MALE CONTACTS ON POS. 1 and 2, NO CONTACTS ON POS. 3, 4, 5
5. METAL BRACKET:  
ZINC DIE CAST; 30µin COPPER/40-120µin NICKEL/120-200µin TIN
6. THREADED INSERT: COPPER ALLOY; min. 200µin TIN over 80µin NICKEL
7. PCB-SNAP: COPPER ALLOY; min. 200µin TIN over 80µin NICKEL  
PCB-HOLE:  $\phi 3,1 \pm 0,1$ mm; PCB-THICKNESS: 1,6mm
8. MAXIMUM TORQUE VALUE FOR THREAD: 6" LBS
9. CONNECTOR IS PART MARKED: 13-000101 CONEC ABC

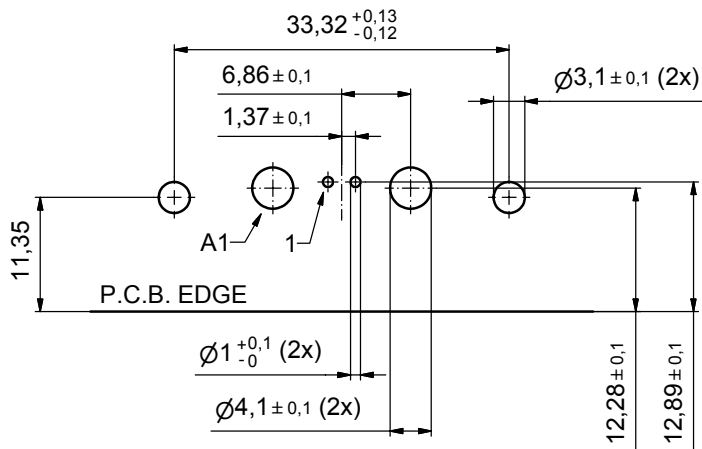
Directive 2002/95/EC  
"RoHS"  
Compliant

APPROVAL # FREIGABE # DEBLOCAGE # AUTORIZACION # APPROVAL	
CUSTOMER APPROVAL DATE:	
NAME:	TITLE:
COMPANY NAME:	
APPROVAL # FREIGABE # DEBLOCAGE # AUTORIZACION # APPROVAL	

THIS DRAWING MAY NOT BE COPIED OR REPRODUCED IN ANY WAY, AND MAY NOT BE PASSED ON TO A THIRD PARTY WITHOUT WRITTEN PERMISSION. OWNERSHIP AND COPYRIGHT OF CONEC GmbH DO NOT ALTER CAD DRAWING BY HAND			
finish:	see notes	tolerance	ISO 2768-m
date	name	dim. in mm	scale: 2:1
drawn 14.06.07	Schmidt		material: see notes
appd. 14.06.07	Koch		title: MicroTCA Single Port 90° Power Module Input Connector Male with threaded insert, metal bracket and snap
norm			dwg no: Inventor 10
d-old			DIN-A3
a	Origin		sh: 1
rev.	description	date	name



dwg no: Inventor 10	DIN-A3
13K1A2061	
part no: 13-000101	



APPROVAL # FREIGABE # DEBLOCAGE # AUTORIZACION # APPROVAL	
CUSTOMER APPROVAL DATE:	
NAME:	TITLE:
COMPANY NAME:	
APPROVAL # FREIGABE # DEBLOCAGE # AUTORIZACION # APPROVAL	

THIS DRAWING MAY NOT BE COPIED OR REPRODUCED IN ANY WAY, AND MAY NOT BE PASSED ON TO A THIRD PARTY WITHOUT WRITTEN PERMISSION. OWNERSHIP AND COPYRIGHT OF CONEC GmbH				finish: see sheet 1		tolerance ISO 2768-m		dim. in mm		scale: 2:1	
DO NOT ALTER CAD DRAWING BY HAND				date		name		material: see sheet 1			
				drawn 14.06.07		Schmidt		title: P.C.B. HOLE DRILLINGS			
				appd. 14.06.07		Koch		MicroTCA Male Single Port 90°			
				norm				Power Module Input Connector			
				d-old				dwg no: Inventor 10		DIN-A3	
				a Origin				13K1A2061		sh: 2	
				rev. description date name				part no: see sheet 1			

