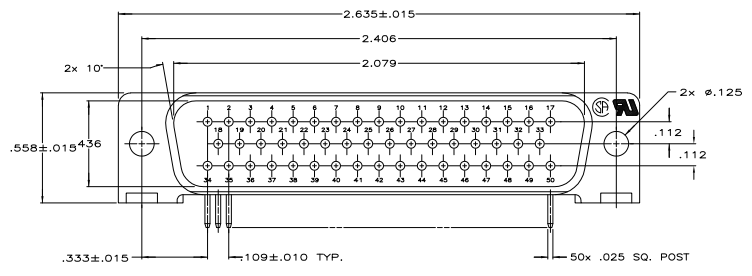
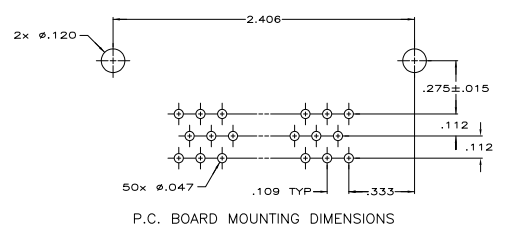
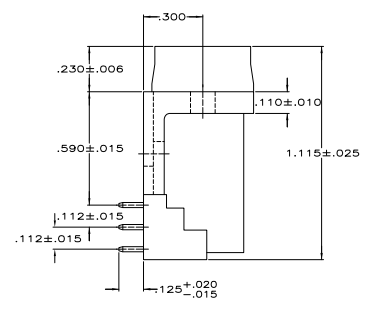
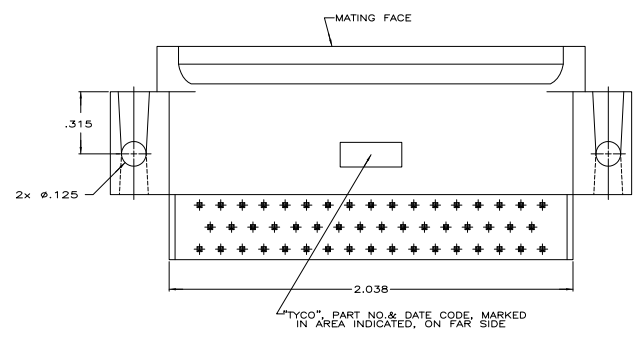


THIS DRAWING IS UNPUBLISHED. RELEASED FOR INFORMATION.
 © 2008 Tyco Electronics Corporation. ALL RIGHTS RESERVED.

REV	DATE	DESCRIPTION	BY	CHK	APP
GP 00					
A		REVISED FOR ECO-06-01486			JDP/EDB



- △ HOUSING: FLAME RETARDANT 94V-0 RATED THERMOPLASTIC, COLOR BLACK.
CONTACTS: BRASS
- △ GOLD PLATED FOR LENGTH OF .150 MIN FROM MATING END, GOLD FLASH IN MATED AREA.
.000100 MIN TIN ON SOLDER END, BOTH OVER
.000050 MIN NICKEL
- △ GOLD PLATED FOR LENGTH OF .150 MIN FROM MATING END, .000030 MIN GOLD IN MATED AREA.
.000100 MIN TIN ON SOLDER END, BOTH OVER
.000050 MIN NICKEL
OR
GOLD FLASH OVER PALLADIUM NICKEL PLATED FOR LENGTH OF .150 MIN FROM MATING END.
.000030 MIN PALLADIUM NICKEL IN MATED AREA,
.000100 MIN TIN ON SOLDER END, BOTH OVER
.000050 MIN NICKEL.



△	5206971-2
△	5206971-1
CONTACT FINISH	PART NUMBER

THIS DRAWING IS A CONTROLLED DOCUMENT.		DESIGNED BY	REVISIONS	DATE	BY	APP
INCHES	UNLESS OTHERWISE SPECIFIED	J. PETERS				
DECIMALS		DR				
FRACTIONS		JE				
ANGLES		JE				
SPRINGS		JE				
WELDS		JE				
PROFILES		JE				
OTHER		JE				
DATE	114-40015	SIZE	DATE	108-40025	REVISIONS	DATE
REV		BY				
APP		CHK				
CUSTOMER DRAWING		DATE	4-1	REV	1	APP

Tyco Electronics Corporation
 Harrisburg, PA 17105-3608
 PLUG ASSEMBLY, SIZE 5, 50 POS.,
 RIGHT ANGLE, 590 SERIES, .025 SQ.
 POSTS, ANILAMITE HD-20