

4

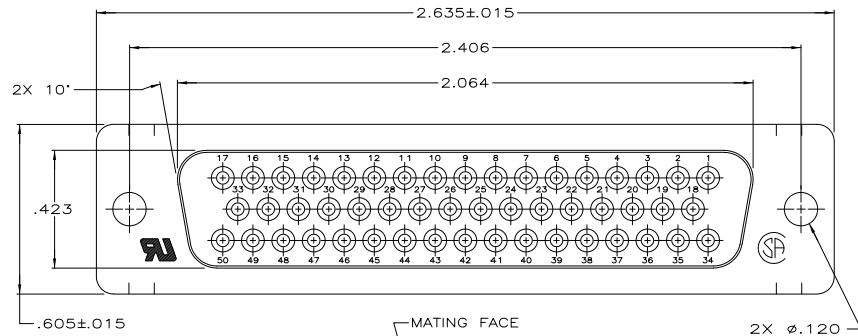
3

2

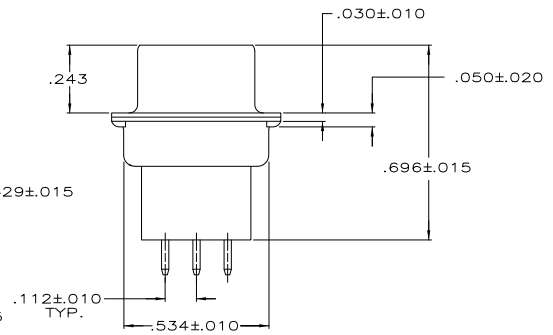
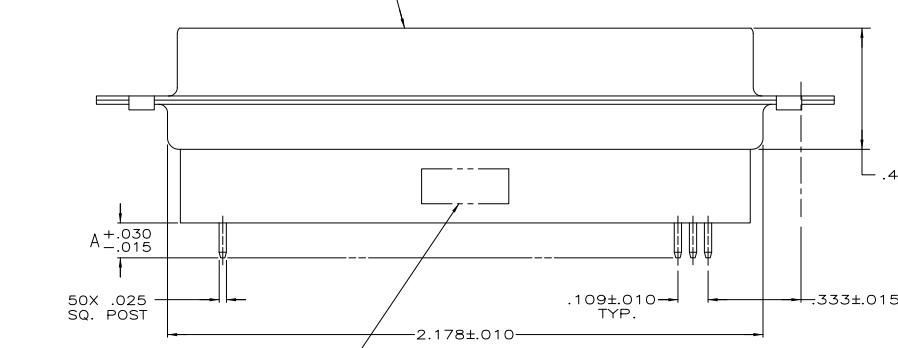
1

THIS DRAWING IS UNPUBLISHED. RELEASED FOR PUBLICATION
 © COPYRIGHT BY TYCO ELECTRONICS CORPORATION. ALL RIGHTS RESERVED.

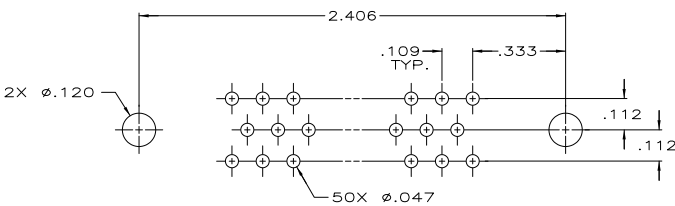
LOC		DIBT		REVISIONS			
GP	00	P	LTR	DESCRIPTION	DATE	OWN	APP'D
		M		REVISED PER ECO-10-000073	18/FEB/2010	CJV	SB



1. NOTE DELETED.
- ⚠ MOLDED PARTS: FLAME RETARDANT 94V-0 RATED THERMOPLASTIC
SHELLS: STEEL
CONTACTS: BRONZE.
 - ⚠ GOLD FLASH ON MATING END, .000100 MIN TIN-LEAD ON SOLDER END, ALL OVER .000050 MIN NICKEL.
 - ⚠ .000030 MIN GOLD ON MATING END, .000100 MIN TIN-LEAD ON OPPOSITE END, ALL OVER .000050 MIN NICKEL.
-OR-
GOLD FLASH OVER PALLADIUM-NICKEL .000030 MIN TOTAL ON MATING END, .000100 MIN TIN-LEAD ON OPPOSITE END, ALL OVER .000050 MIN NICKEL.
 - ⚠ .000200 MIN TIN OVER .000100 MIN COPPER.



"AMP", PART NO. & DATE CODE, STAMPED
 IN AREA INDICATED, ON FAR SIDE



P.C. BOARD MOUNTING DIMENSIONS

SUPSD BY 745191-7	⚠	.188	745191-8
	⚠	.188	745191-7
	⚠	.651	745191-6
SUPSD BY 205740-5	⚠	.651	745191-5
	⚠	.427	745191-4
	⚠	.427	745191-3
SUPSD BY 745191-1	⚠	.125	745191-2
	⚠	.125	745191-1
	⚠	DIMENSION A	PART NUMBER

THIS DRAWING IS A CONTROLLED DOCUMENT.		DN	10-24-83	Tyco Electronics Corporation	
DIMENSIONS: INCHES		J GERACE	10-24-83	Harrisburg, PA 17105-3608	
TOLERANCES UNLESS OTHERWISE SPECIFIED:		J GERACE	1-4-84	NAME: B. TAYLOR	
Ø	PLC	±		RECEPTACLE ASSEMBLY, SIZE 5,	
1	PLC	±		50 POS., VERTICAL,	
2	PLC	±		TM	
3	PLC	± .005		SIZE CASE CODE DRAWING NO.	
4	PLC	± .005		108-40025	
5	PLC	± .005		APPLICATION SPEC: 114-40013	
6	PLC	± .005		HEIGHT: -	
7	PLC	± .005		REVISION: A2	
8	PLC	± .005		CUSTOMER DRAWING	
9	PLC	± .005		SCALE: NTS	
10	PLC	± .005		SHEET: 1 of 1	
11	PLC	± .005		REV: M	

AMP 1471-9 REV 31MM2000

745191

A