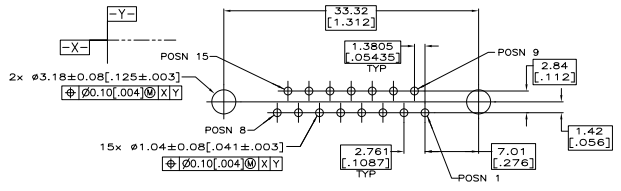
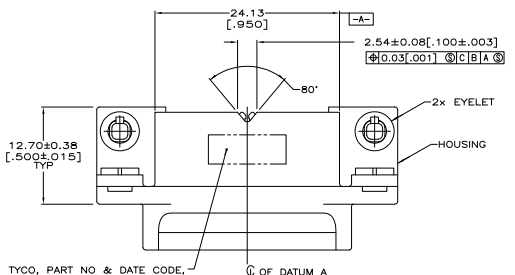


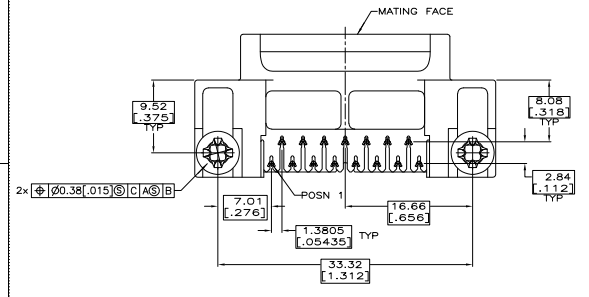
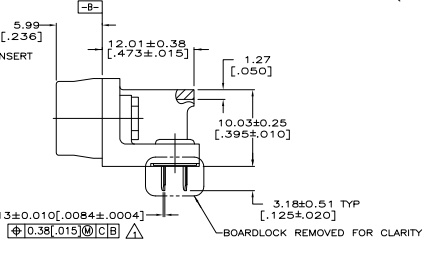
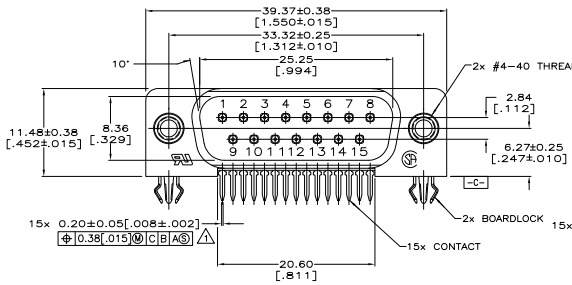
THIS DRAWING IS UNCLASSIFIED
 UNLESS INDICATED OTHERWISE
 BY TYCO ELECTRONICS CORPORATION. ALL WORK HEREON

REV	DATE	DESCRIPTION	BY	CHK	APPV
00					
0		RELEASED FOR DC 0513-0087-05	2005P05	GP	JG



PC BOARD MOUNTING DIMENSIONS
 (.062 PC BOARD THICKNESS)

- △ POSITION TOLERANCE APPLIES AT TIP ONLY.
- △ HOUSING: FLAME RETARDANT 94V-0, GLASS FILLED, NYLON OR POLYESTER, COLOR BLACK.
- CONTACTS: BRASS
- EYELETS: BRASS
- INSERTS: ZINC
- BOARDLOCKS: COPPER ALLOY
- △ EYELETS: 2.54 µm [0.00100] MIN TIN OVER COPPER FLASH.
- BOARDLOCKS: 3.81 µm [0.0015] MIN TIN OVER 1.27 µm [0.00050] MIN NICKEL.
- CONTACTS: GOLD PLATED FOR A LENGTH OF 3.81 [150] MIN FROM MATING END, 0.76 µm [0.00030] MIN GOLD IN MATED AREA, 2.54 µm [0.001] MIN TIN FOR A LENGTH OF 3.68 [145] MIN FROM OPPOSITE END, BOTH OVER 1.27 µm [0.00050] MIN NICKEL.
- INSERTS: CLEAR CHROMATE COATING.



COPYRIGHT 2005
 TYCO ELECTRONICS CORP
 ALL RIGHTS RESERVED

THIS DRAWING IS A CONTROLLED DOCUMENT.		REV	DATE	DESCRIPTION	BY	CHK	APPV
0	114-40027	108-1226					
1	114-40027	108-1226					
2	114-40027	108-1226					
3	114-40027	108-1226					
4	114-40027	108-1226					
5	114-40027	108-1226					
6	114-40027	108-1226					
7	114-40027	108-1226					
8	114-40027	108-1226					
9	114-40027	108-1226					
10	114-40027	108-1226					
11	114-40027	108-1226					
12	114-40027	108-1226					
13	114-40027	108-1226					
14	114-40027	108-1226					
15	114-40027	108-1226					
16	114-40027	108-1226					
17	114-40027	108-1226					
18	114-40027	108-1226					
19	114-40027	108-1226					
20	114-40027	108-1226					
21	114-40027	108-1226					
22	114-40027	108-1226					
23	114-40027	108-1226					
24	114-40027	108-1226					
25	114-40027	108-1226					
26	114-40027	108-1226					
27	114-40027	108-1226					
28	114-40027	108-1226					
29	114-40027	108-1226					
30	114-40027	108-1226					
31	114-40027	108-1226					
32	114-40027	108-1226					
33	114-40027	108-1226					
34	114-40027	108-1226					
35	114-40027	108-1226					
36	114-40027	108-1226					
37	114-40027	108-1226					
38	114-40027	108-1226					
39	114-40027	108-1226					
40	114-40027	108-1226					
41	114-40027	108-1226					
42	114-40027	108-1226					
43	114-40027	108-1226					
44	114-40027	108-1226					
45	114-40027	108-1226					
46	114-40027	108-1226					
47	114-40027	108-1226					
48	114-40027	108-1226					
49	114-40027	108-1226					
50	114-40027	108-1226					

5748904-1
 PART NO

TYCO ELECTRONICS CORPORATION		Harrisburg, PA 17105-2608	
REV	DATE	DESCRIPTION	BY
0			
1			
2			
3			
4			
5			
6			
7			
8			
9			
10			
11			
12			
13			
14			
15			
16			
17			
18			
19			
20			
21			
22			
23			
24			
25			
26			
27			
28			
29			
30			
31			
32			
33			
34			
35			
36			
37			
38			
39			
40			
41			
42			
43			
44			
45			
46			
47			
48			
49			
50			