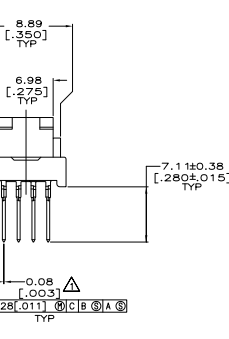
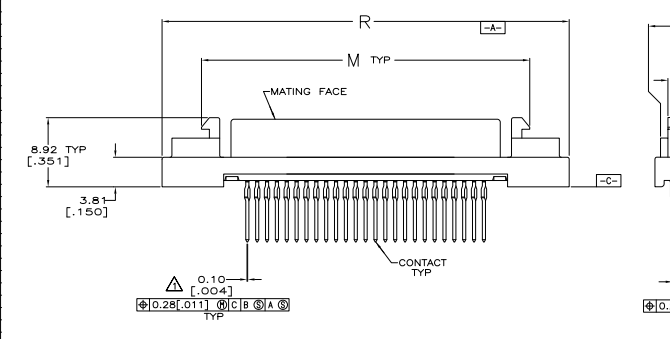
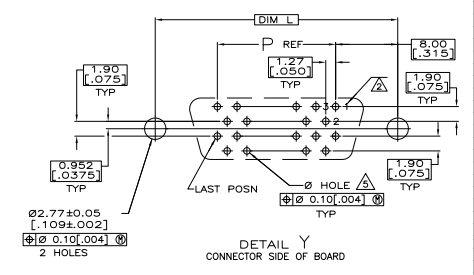
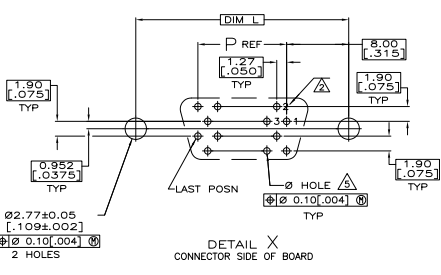
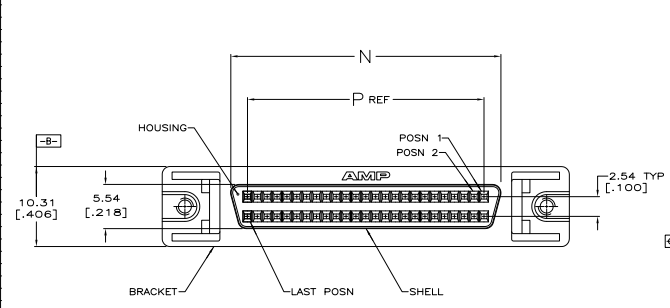
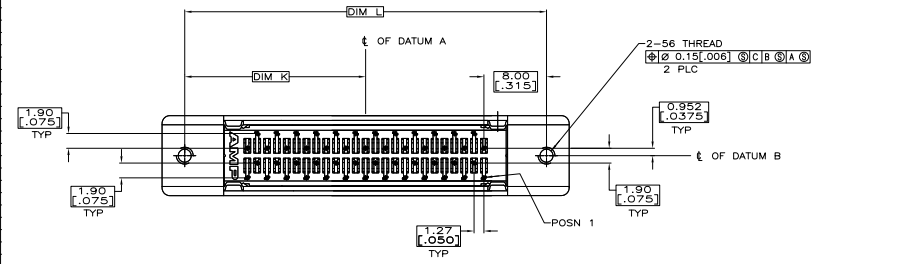


REV	DATE	DESCRIPTION	BY	CHK	APP
A	REVISED PER ECO-08-018735		SAUGUSTIN	ZMR	BAS
AT	REV PER ECO-10-000444		03NOV09	KK	AEG



- △ POSITION TOLERANCE APPLIES AT CONTACT TIP.
- △ POSITION NUMBERS SHOWN FOR REFERENCE ONLY.
- △ MATERIAL:  
HOUSING - POLYPHTHALAMIDE, BLACK, UL 94-V0 RATED.  
SHELL - CARBON STEEL.  
CONTACTS - PHOSPHOR BRONZE.  
BRACKET - ZINC.
- △ FINISH:  
SHELL - 5.09µm [.000200] MIN NICKEL OVER 1.27µm [.000050] MIN COPPER.  
BRACKET - 3.51µm [.000150] MIN NICKEL OVER 5.08µm [.000200] MIN COPPER.  
CONTACTS - EITHER 0.76µm [.000030] MIN GOLD PLATE OR GOLD FLASH OVER PALLADIUM NICKEL, 0.76µm [.000030] MIN TOTAL, FOR A LENGTH OF 0.64 [.025] MIN, 0.13 [.005] MAX FROM MATING END, 1.27µm [.000050] MIN TIN ON OPPOSITE END FOR A LENGTH OF 7.49 [.295] MIN, ALL OVER 1.27µm [.000050] MIN NICKEL UNDERPLATE.
- △ PC BOARD HOLE RECOMMENDATIONS:  
A. HOLES SHOULD BE DRILLED WITH A 0.701 [.0276] DRILL.  
B. PC BOARD PLATING TO BE 7.62µm [.000300] MIN TIN OVER 0.025-0.038 [.0010-.0015] COPPER.  
C. RECOMMENDED HOLE SIZE AFTER TIN PLATING IS 0.56-0.66 [.022-.026].
- △ OBSOLETE PARTS: OBSOLETE CIS STREAMLINING PER D.RENAUD/D.SINISI



REV	DESCRIPTION	PER DETAIL X	74.93	79.15	86.74	90.93	45.47	120	PART NUMBER
6	OBSOLETE	96.90	74.93	79.15	86.74	90.93	45.47	120	1-5786556-0
	OBSOLETE	63.88	41.91	46.13	53.72	57.91	28.96	68	5786556-7
	PER DETAIL Y	52.45	30.48	34.70	42.29	46.48	23.24	50	5786556-5

**COPYRIGHT 2005  
TYCO ELECTRONICS CORP  
ALL RIGHTS RESERVED**

THIS DRAWING IS A CONTROLLED DOCUMENT. IT IS THE PROPERTY OF TYCO ELECTRONICS CORPORATION. IT IS TO BE KEPT IN CONFIDENCE AND NOT TO BE REPRODUCED OR TRANSMITTED IN ANY FORM OR BY ANY MEANS, ELECTRONIC OR MECHANICAL, INCLUDING PHOTOCOPYING, RECORDING, OR BY ANY INFORMATION STORAGE AND RETRIEVAL SYSTEM, WITHOUT THE WRITTEN PERMISSION OF TYCO ELECTRONICS CORPORATION.

RECEIPTABLE ASSEMBLY, SHIELDED, VERTICAL, RAISED, ACTION PIN FOR 125 TO 200 TRICK BOX AMPLITUDE, 0.000 SERIES

114-40029  
108-1228  
114-40029  
108-1228

DATE: 11/14/09  
DRAWN BY: SAUGUSTIN  
CHECKED BY: ZMR  
APPROVED BY: BAS

CUSTOMER DRAWING  
REV: 4.1  
SHEET: 1 OF 1  
APP: AT