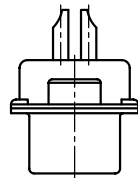
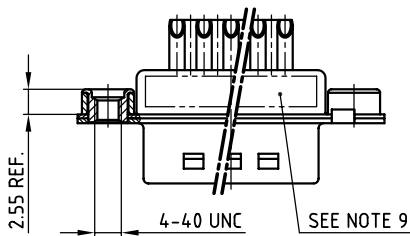
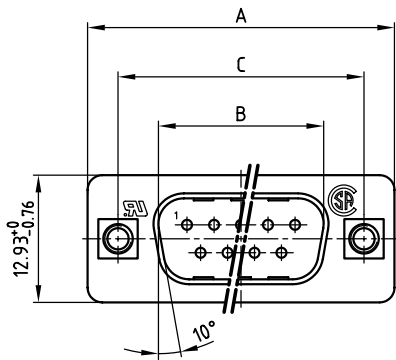
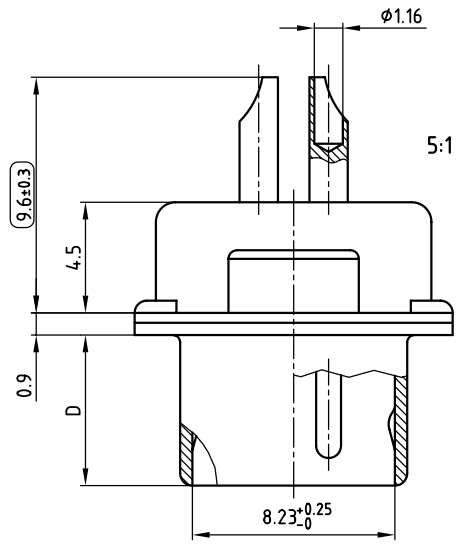


used for: D-SUB FILTER

POS.	A -0.76	B $+0.25$	C	D -0.3	Part NO.
9	31.19	16.79	25.00 $+0.12$ -0.13	6.12	241A27120X
15	39.52	25.12	33.30 $+0.15$ -0.1	6.12	241A27130X
25	53.42	38.84	47.04 ± 0.13	5.99	241A27140X
37	69.70	55.30	63.50 ± 0.13	5.99	241A27150X



NOTES:

- METALSHELLS: STEEL; min. 320µ" TIN
- INSULATORS: HIGH TEMPERATURE PLASTIC UL 94 V-0, BLACK
- CONTACTS: COPPER ALLOY
PLATING: 8µ" HARD GOLD OVER min. 50µ" NICKEL
SOLDER CUP ACCEPTS CABLE AWG 20
- THREADED INSERT: COPPER ALLOY; min. 200µ" TIN over 80µ" NICKEL
- COLLAR: COPPER ALLOY; min. 200µ" TIN over 80µ" NICKEL
- CAPACITANCE: 1300pF ±20%
- DIELECTRIC WITHSTANDING VOLTAGE: 424 VDC
- MAXIMUM TORQUE VALUE FOR THREAD: 6" LBS
- CONNECTOR IS PART MARKED: PART-NO. CONEC ABC
- = CHECK DIMENSION

Directive 2002/95/EC
"RoHS"
Compliant

APPROVAL # FREIGABE # DEBLOCAGE # AUTOR/ZACION # APPROVAL	APPROVAL # FREIGABE # DEBLOCAGE # AUTOR/ZACION # APPROVAL
CUSTOMER APPROVAL DATE:	
NAME:	TITLE:
COMPANY NAME:	
APPROVAL # FREIGABE # DEBLOCAGE # AUTOR/ZACION # APPROVAL	APPROVAL # FREIGABE # DEBLOCAGE # AUTOR/ZACION # APPROVAL

THIS DRAWING MAY NOT BE COPIED OR REPRODUCED IN ANY WAY, AND MAY NOT BE PASSED ON TO A THIRD PARTY WITHOUT WRITTEN PERMISSION. OWNERSHIP AND COPYRIGHT OF CONEC GmbH DO NOT ALTER CAD DRAWING BY HAND

rev.	description	date	name
a	Origin		

tolerance			dim. in mm	scale:	2:1 (5:1)
				material:	SEE NOTES
2006	date	name	title:		
drawn	06.02.	Lehmenkühler	D-SUB FILTER MALE 9-37pos. SOLDER CUP with threaded insert		
appd.	06.02.	Mickenbecker			
norm	DIN 41652				
d-old			dwg no:	AutoCAD 2004	DIN-A
			24K1A760		
			part no:	SEE TABLE	
			3 sh: 1/1		

