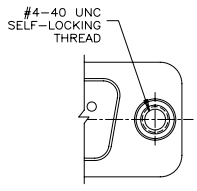


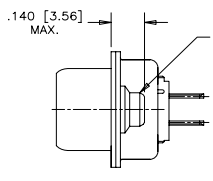
REVISIONS			
REV	ECN, ERN NO.	DATE	APPRD.
D	PRODUCT DRAWING (EAR 13733)	JUN23/10	K.L.

ADDITIONAL MOUNTING OPTIONS AVAILABLE  
FOR PIN OR SOCKET CONNECTOR



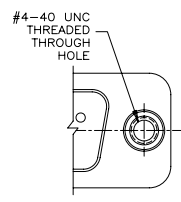
PARTIAL FRONT VIEW

MOUNTING CODE 3



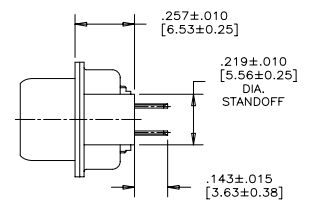
END VIEW

VIEW FOR E09, A15 & B25 SIZE. FOR C37 SIZE VIEW SEE MOUNTING CODE 4, SHEET 1.

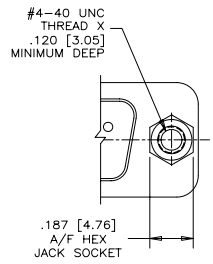


PARTIAL FRONT VIEW

MOUNTING CODE 5

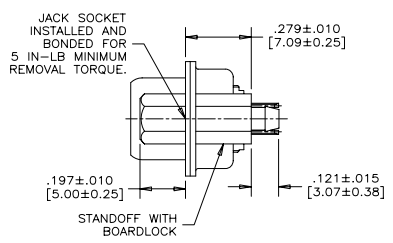


END VIEW



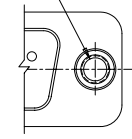
PARTIAL FRONT VIEW

MOUNTING CODE 9



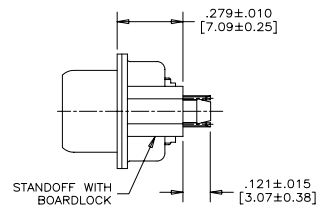
END VIEW

MOUNTING CODE A - #4-40 UNC MOUNTING CODE J - M3 x 0.5 THREAD DEPTH .220 [5.59] MIN.



PARTIAL FRONT VIEW

MOUNTING CODES A & J



END VIEW



DRAWN K. LAMBIE	DATE MAY13/05	Amphenol Canada Corp.	
DESIGNED		TITLE	
CHECKED		FCE17 SERIES FILTERED D-SUB CONNECTOR, PIN & SOCKET, VERTICAL MOUNT PCB TAIL, VARIOUS MOUNTING OPTIONS, RoHS COMPLIANT	
I. E. APPRD.		DWG	DRAWING NO.
Q. A. APPRD.		C	P-FCE17-XXXXE-XXOX
DWG. APPRD.		DIMENSIONS ARE IN INCHES [mm]	03554
ENG. REL. NO.		SCALE	3/1
REF. EAR #12744		WT.	-----
		SURF.	-----
		SHEET	2 OF 2

THIS DOCUMENT CONTAINS PROPRIETARY INFORMATION AND SUCH INFORMATION MAY NOT BE DISCLOSED TO OTHERS FOR ANY PURPOSE OR USED FOR MANUFACTURING PURPOSES WITHOUT WRITTEN PERMISSION FROM AMPHENOL CANADA CORP.