

# MICROTCA POWER INPUT CONNECTOR

Socket connector – Solder cup or crimp body



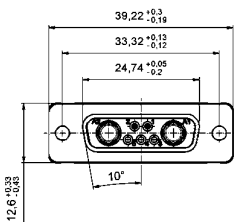
RoHS compliant

## DESCRIPTION

- 7W2 MicroTCA Design: 2 Power / 2 signal contacts
- Available with bridged and unbridged signal contacts
- Mounting style: with Through-hole .118" / 3.0 mm
- Power contacts solder cup or crimp type wire size
- Note for 9W4 product please contact factory

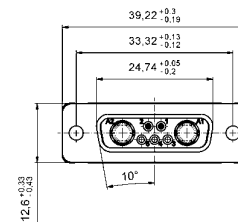
## PRODUCT DRAWING

### Solder cup

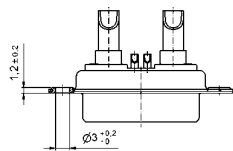


AWG	X	Current rating
10-12	3.5	max. 30 A
12-14	2.7	max. 20 A
16-20	1.8	max. 10 A

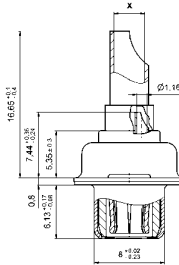
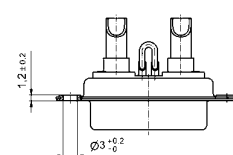
### Crimp version



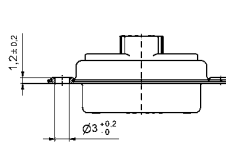
### With signal contacts



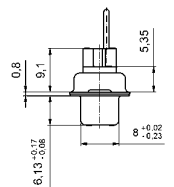
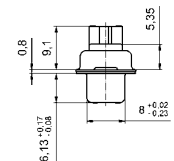
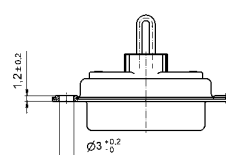
### With bridged signal contact



### Without signal contacts



### with bridged signal contacts



## ORDER DATA

### SOCKET CONNECTOR VERSION SOLDER CUP

Design	Wire size	Current rating	Mounting style	Signal contacts	Part Number
7W2	AWG 10...12	30 A	Through-hole .118" / 3.0 mm	Unbridged	13-000131
7W2	AWG 12...14	20 A	Through-hole .118" / 3.0 mm	Unbridged	13-000141
7W2	AWG 16...20	10 A	Through-hole .118" / 3.0 mm	Unbridged	13-000151
7W2	AWG 10...12	30 A	Through-hole .118" / 3.0 mm	Bridged	13-000161
7W2	AWG 12...14	20 A	Through-hole .118" / 3.0 mm	Bridged	13-000171
7W2	AWG 16...20	10 A	Through-hole .118" / 3.0 mm	Bridged	13-000181

### SOCKET CONNECTOR CRIMP BODY

Design	Design	Mounting style	Crimp signal contacts	Part Number
7W2	Crimp body	Through-hole .118" / 3.0 mm	Without signal contacts	13-000190
7W2	Crimp body	Through-hole .118" / 3.0 mm	Bridged	13-000201