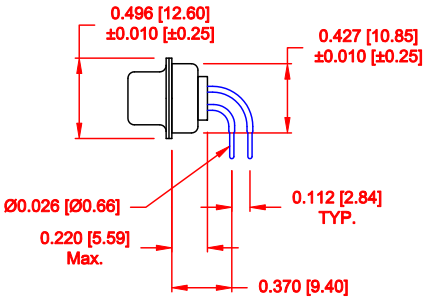
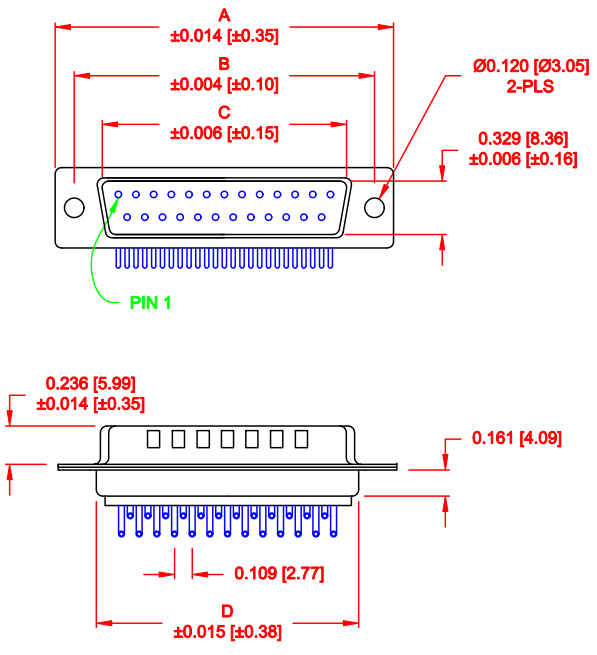


DESCRIPTION: MALE - 0.370 RIGHT ANGLE - MACHINED - ECONOMY

		DIMENSIONS							
No. OF PINS		A	B	C	D	E	F	G	H
9		1.213	0.984	0.666	0.329	0.236	0.756	0.496	0.427
		30.80	24.99	16.92	8.36	5.99	19.20	12.60	10.85
15		1.541	1.312	0.994	0.329	0.236	1.091	0.496	0.427
		39.15	33.32	25.25	8.36	5.99	27.70	12.60	10.85
25		2.087	1.852	1.534	0.329	0.236	1.618	0.496	0.427
		53.00	47.04	38.96	8.36	5.99	41.10	12.60	10.85



774-EYY-1 1 3 R YY 1

SERIES: 774-EYY-1
 POSITIONS: 1 1 3
 GENDER: R
 TERMINATION: YY
 SHELL PLATING: 1
 HARDWARE OPTIONS: 1

1 = MALE
 1 = THROUGH HOLE
 3 = NICKEL (GROUND INDENTS)
 1 = GOLD FLASH
 2 = 30 MICRO-INCH GOLD

MEETS IP67 STANDARDS
 (SEE PAGE 3 FOR SEALING DETAILS)

MATERIAL:
 SHELL: STEEL, NICKEL PLATED
 INSULATOR: UL 94V-O RATED, WHITE PA6T
 PROCESS TEMP.: 260° C
 CONTACT: BRASS
 SEALING MATERIAL: F08 FLEXIBLE ADHESIVE

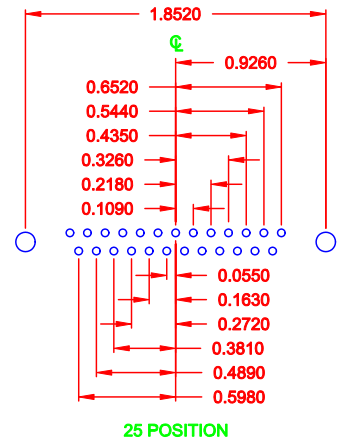
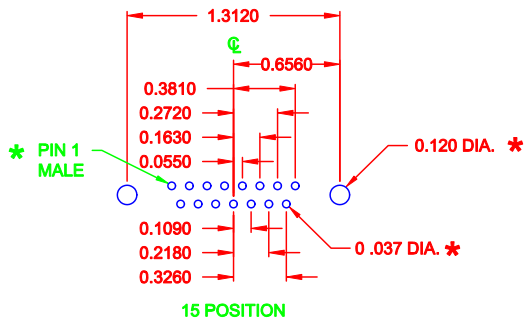
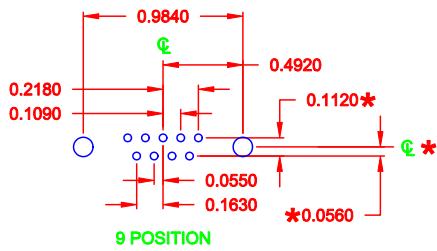
ELECTRICAL:
 CURRENT RATING: 5 AMPS
 CONTACT RESISTANCE: 15 mOhms Max.
 INSULATION RESISTANCE: 1,000 MOhms min.
 VOLTAGE: 500VAC FOR 1 MINUTE
 TEMPERATURE: -50° C TO 100° C

RoHS COMPLIANT

DO NOT SCALE FROM DRAWING


	THESE DRAWINGS AND SPECIFICATIONS ARE THE PROPERTY OF NorComp AND SHALL NOT BE REPRODUCED, COPIED OR USED AS THE BASIS FOR THE MANUFACTURE OF SALE OF APPARATUS WITHOUT WRITTEN PERMISSION.		DRAWN: C. SMITH	DATE: 03-26-09
			CHECKED:	DATE:
NorComp		SCALE: 1:1	SHEET 1 OF 3	REV 2
		DWG NO. 774-EYY-113RYY1		

DESCRIPTION: PCB LAYOUT - RIGHT ANGLE

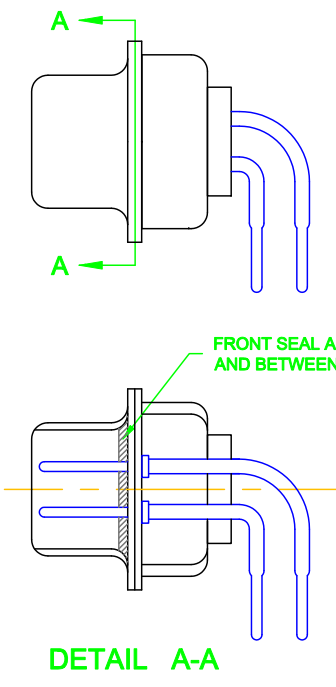


* TYP. ON ALL SIZES
UNLESS NOTED OTHERWISE

DO NOT SCALE FROM DRAWING

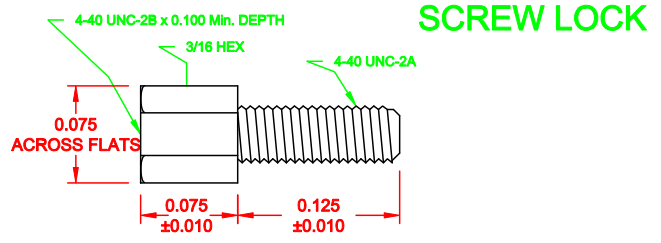
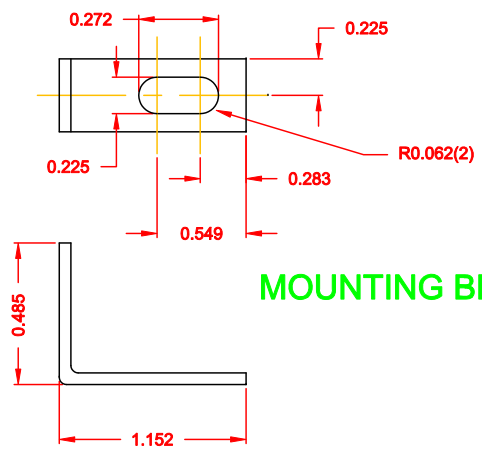
	THESE DRAWINGS AND SPECIFICATIONS ARE THE PROPERTY OF NorComp AND SHALL NOT BE REPRODUCED, COPIED OR USED AS THE BASIS FOR THE MANUFACTURE OF SALE OF APPARATUS WITHOUT WRITTEN PERMISSION.		DRAWN: C. SMITH	DATE: 06-10-09
	<h1>NorComp</h1>		CHECKED:	DATE:
SCALE: 1 : 1			SHEET 2	OF 3
		DWG NO. 774-EYY-113RYY1		

DESCRIPTION: IP67 - MALE - RIGHT ANGLE - MACHINED - ECONOMY - SEALING PROCESS




HARDWARE OPTION

14 = SHORT BRACKET & 4-40 SCREW LOCK



DO NOT SCALE FROM DRAWING

	THESE DRAWINGS AND SPECIFICATIONS ARE THE PROPERTY OF NorComp AND SHALL NOT BE REPRODUCED, COPIED OR USED AS THE BASIS FOR THE MANUFACTURE OF SALE OF APPARATUS WITHOUT WRITTEN PERMISSION.		DRAWN: C. SMITH	DATE: 06-10-09
			CHECKED:	DATE:
NorComp		SCALE: 2.5 : 1	SHEET 3 OF 3	REV 2
		DWG NO. 774-EYY-113RYY1		