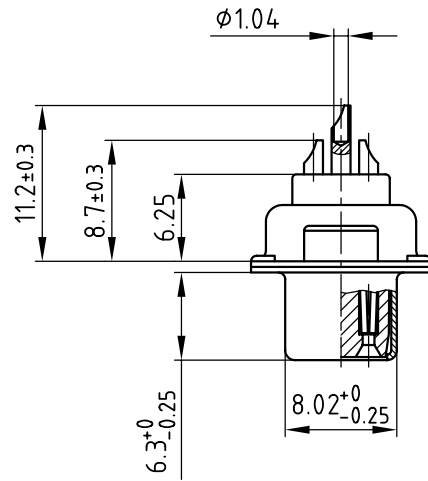
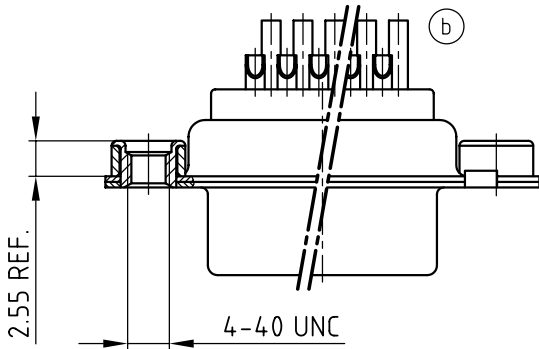
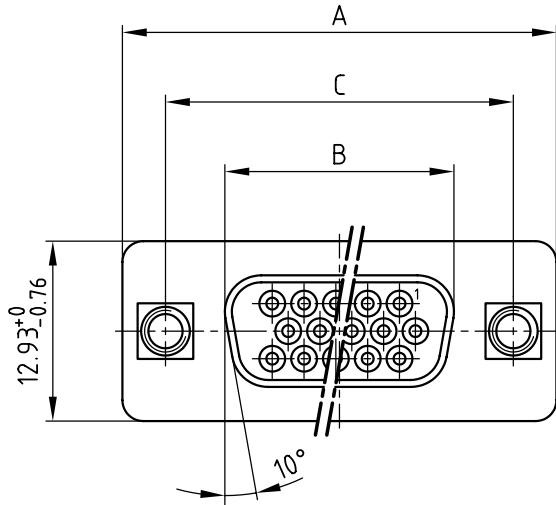


used for: D-SUB HD

POS.	A ^{-0.76}	B ^{-0.25}	C	Part NO.
15	31.19	16.46	25.00 ^{+0.12} / _{-0.13}	164A17059X
26	39.52	24.79	33.30 ^{+0.15} / _{-0.1}	164A17069X
44	53.42	38.50	47.04 ±0.13	164A17079X
62	69.70	54.96	63.50 ±0.13	164A17089X



NOTES:

- METALSHELLS: STEEL; min. 315µin TIN over 40-80µin Nickel
- INSULATORS: PBT GF UL 94 V-0, BLACK
- CONTACTS: COPPER ALLOY
PLATING: 8µin HARD GOLD over min. 50µin NICKEL
SOLDER CUP ACCEPTS CABLE AWG 22
- THREADED INSERT: COPPER ALLOY; min. 200µin TIN over 80µin NICKEL
- COLLAR: COPPER ALLOY; min. 200µin TIN over 80µin NICKEL
- MAXIMUM TORQUE VALUE FOR THREAD: 6 in.LB
- CONNECTOR IS PART MARKED: PART-NO. CONEC ABC



APPROVAL # FREIGABE # DEBLOCAGE # AUTORIZACION # APPROVAL	
CUSTOMER APPROVAL DATE:	
NAME:	TITLE:
COMPANY NAME:	
APPROVAL # FREIGABE # DEBLOCAGE # AUTORIZACION # APPROVAL	

THIS DRAWING MAY NOT BE COPIED OR REPRODUCED IN ANY WAY, AND MAY NOT BE PASSED ON TO A THIRD PARTY WITHOUT WRITTEN PERMISSION. OWNERSHIP AND COPYRIGHT OF CONEC GmbH DO NOT ALTER CAD DRAWING BY HAND

tolerance		dim. in mm	
2003	date	name	
drawn	30.07.	Lehmenkühler	
appd.	30.07.	Mickenbecker	
norm			
d-old			
2 x b	Ä3097	29.08.08	Petker
a	Origin		
rev.	description	date	name



scale:	2:1	
material:	SEE NOTES	
title:	D-SUB HD FEMALE 15-62pos. SOLDER CUP with threaded insert	
dwg no:	AutoCAD 2000	DIN-A
	16K1A989	4
		sh: 1/1
part no:	SEE TABLE	