

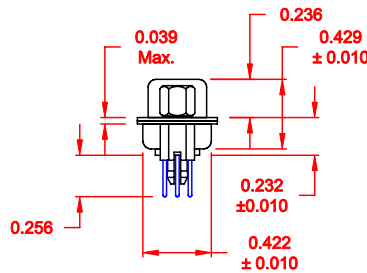
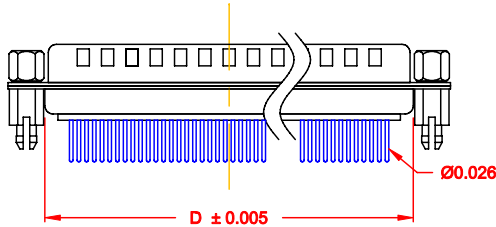
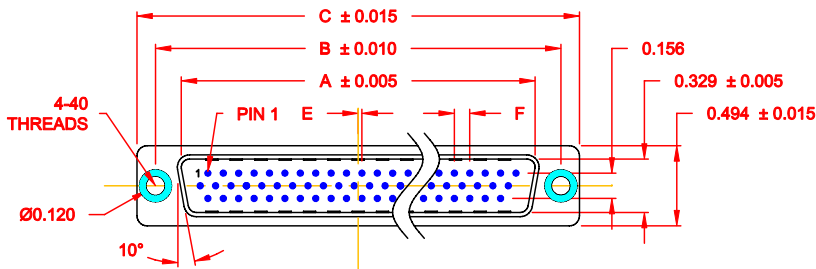
DESCRIPTION: HIGH DENSITY - MACHINED CONTACTS - VERTICAL

MATERIALS AND FINISH:

SHELL: STEEL MATERIAL, NICKEL FINISH
 INSULATOR: PA6T = 260°C, UL 94V-0 RATED, BLACK
 CONTACT MATERIAL: BRASS
 CONTACT FINISH: FULL GOLD FLASH

ELECTRICAL:

CONTACT CURRENT RATING: 5 AMPS
 CONTACT RESISTANCE: 30 Milliohms Max.
 DIELECTRIC WITHSTANDING VOLTAGE: 1,00VAC Min.
 INSULATION RESISTANCE: 5,000 Megohms Min.
 TEMPERATURE RATING: -55° ~ +105° C




180-MYY-11YRYYY

SERIES 180
 MACHINED CONTACTS MY
 POSITION Y
 POSITION 11
 GENDER R
 GENDER 1 = MALE
 TERMINATION Y
 TERMINATION 1 = VERTICAL DIP
 SHELL PLATING R
 SHELL PLATING 3 = NICKEL
 RoHS (HIGH TEMP.) 260° PROCESS
 HARDWARE
 00 = Ø 0.120" HOLE
 01 = 0.098" 4-40 INSERT, BOARD SIDE
 02 = 0.250" 4-40 INSERT, BOARD SIDE
 03 = 0.250" 4-40 INSERT, MATING SIDE
 05 = 0.224" 4-40 BOARD LOCK, BOARD SIDE
 91 = 0.224" BOARD LOCK, BOARD SIDE
 0.189" SCREW LOCK, MATING SIDE
 CONTACT PLATING
 1 = GOLD FLASH, ENTIRE CONTACT
 2 = 30u" GOLD, ENTIRE CONTACT

DIMENSIONS (IN.)						
No. OF PINS	A	B	C	D	E	F
15	0.666	0.984	1.213	0.759	0.010	0.090
25	0.994	1.312	1.541	1.083	0.020	0.090
44	1.534	1.852	2.088	1.625	0.020	0.090
62	2.182	2.500	2.729	2.272	0.023	0.094

DO NOT SCALE FROM DRAWING

RoHS COMPLIANT

 <p>THESE DRAWINGS AND SPECIFICATIONS ARE THE PROPERTY OF NorComp AND SHALL NOT BE REPRODUCED, COPIED OR USED AS THE BASIS FOR THE MANUFACTURE OF SALE OF APPARATUS WITHOUT WRITTEN PERMISSION.</p>	DRAWN: C. SMITH CHECKED:	DATE: 03-16-07 DATE:
	SCALE: 1 : 1 DWG NO. 180-MYY-11YRYYY	SHEET 1 OF 3

NorComp

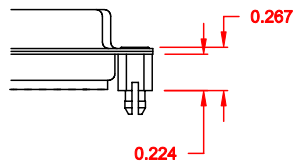
180-MYY-11YRYYY

DESCRIPTION: CLINCH NUT HARDWARE

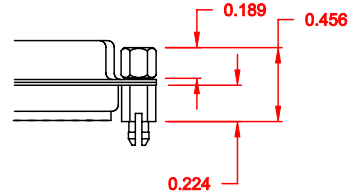
TOLERANCE:
ALL DIMENSIONS ARE ± 0.010

ALL CLINCH-NUTS ARE 4-40 INTERNAL THREADS

05X 0.224" BOARD SIDE - CN10

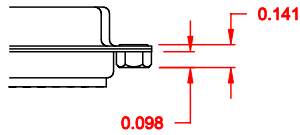


91X 0.224" BOARD SIDE
0.189 MATING SIDE
CN10/SFSO4404

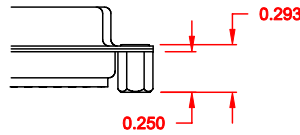


NOTE: 4-40 FEMALE SCREW LOCK IS REMOVABLE

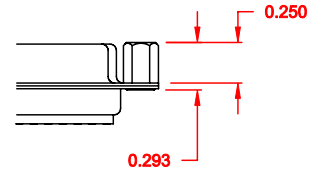
01X 0.098" (BOARD SIDE) - CN1



02X 0.250" (BOARD SIDE) - CN2




03X 0.250" (MATING SIDE) - CN8

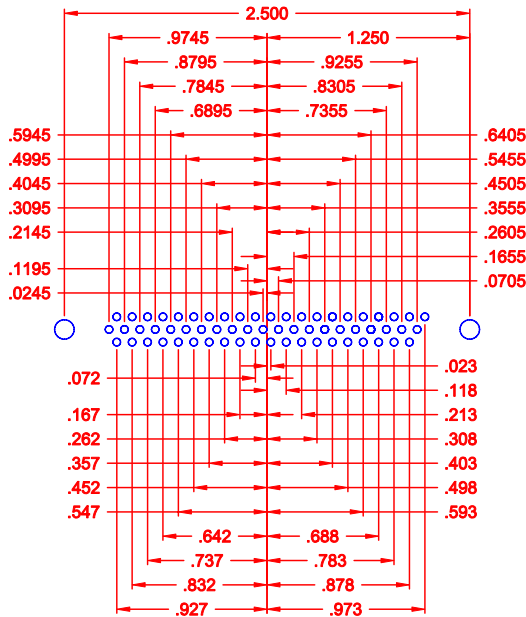
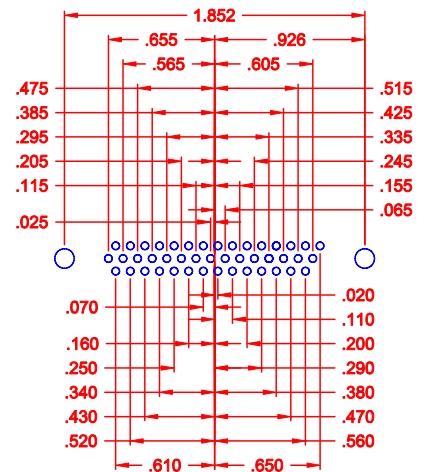
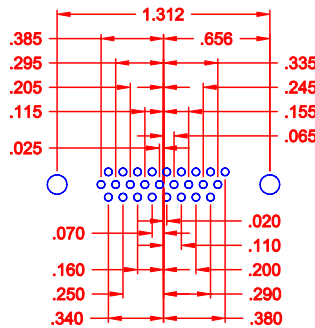
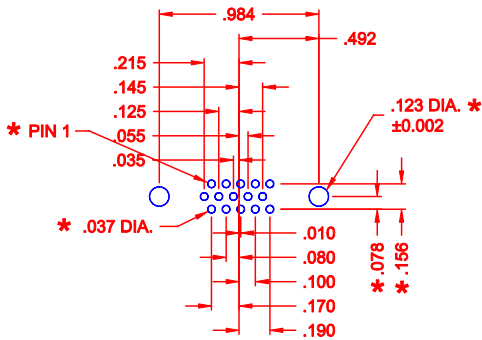


DO NOT SCALE FROM DRAWING

RoHS COMPLIANT

	THESE DRAWINGS AND SPECIFICATIONS ARE THE PROPERTY OF NorComp AND SHALL NOT BE REPRODUCED, COPIED OR USED AS THE BASIS FOR THE MANUFACTURE OF SALE OF APPARATUS WITHOUT WRITTEN PERMISSION.		DRAWN: C. SMITH	DATE: 02-12-08
			CHECKED:	DATE:
<h1>NorComp</h1>		SCALE:	SHEET 2	OF 3
		DWG NO. 180-MYY-11YRYYY		

DESCRIPTION: LAYOUT - HIGH DENSITY - MACHINED CONTACTS - VERTICAL



* TYP. ON ALL SIZES

DO NOT SCALE FROM DRAWING

	THESE DRAWINGS AND SPECIFICATIONS ARE THE PROPERTY OF NorComp AND SHALL NOT BE REPRODUCED, COPIED OR USED AS THE BASIS FOR THE MANUFACTURE OF SALE OF APPARATUS WITHOUT WRITTEN PERMISSION.		DRAWN: C. SMITH	DATE: 03-16-07
			CHECKED:	DATE:
<h1>NorComp</h1>		SCALE: 1 : 1	SHEET 3	OF 3
		DWG NO. 180-MYY-11YRYYY		