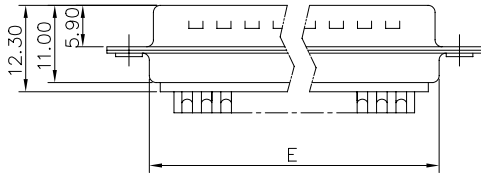
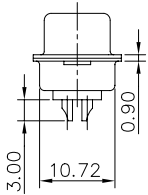
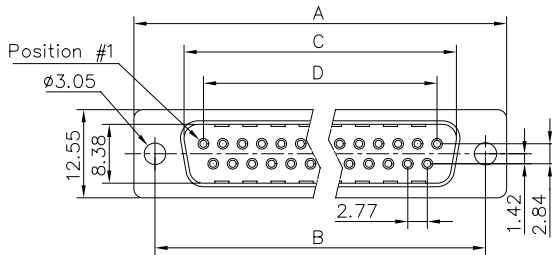


This document is the property of Amphenol Corporation and is delivered on the express condition that it is not to be disclosed, reproduced or used, in whole or in part, for manufacture or sale by anyone other than Amphenol Corporation without the prior consent, & that no right is granted to disclose or to use any information in this document.



Customer drawing

| Nb OF CONTACTS | Dimension | | | | |
|----------------|-----------|-------|-------|-------|-------|
| | A | B | C | D | E |
| 9 | 30.84 | 24.99 | 16.92 | 11.09 | 19.28 |
| 15 | 39.24 | 33.32 | 24.70 | 19.39 | 27.51 |
| 25 | 53.04 | 47.04 | 38.96 | 33.24 | 41.30 |
| 37 | 69.32 | 63.50 | 55.42 | 49.86 | 57.71 |

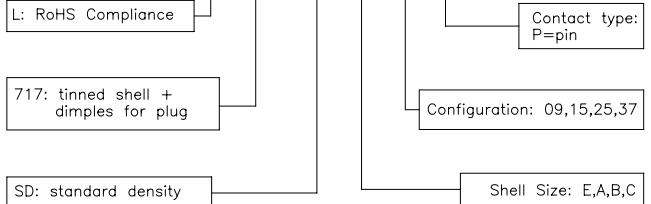
| REVISIONS | | | | |
|-----------|-----|-------------|----------|----------|
| SYM | ECN | DESCRIPTION | DATE | APPROVED |
| 1 | | | 03/20/08 | |

D-SUB TECHNICAL DATA

SHELL : Steel 100u"min tin over 50u" min nickel
 BODY : Glass filled thermoplastic.
 Flame retardant to UL94 V-0 Color Black
 CONTACTS : Brass
 Gold flash over 50u" min nickel on mating area.
 100u" min tin over 50u" min nickel on solder area
 ELECTRICAL: Voltage rating : 250 V Rms to 50 Hz
 Current rating : 3A
 Withstanding Voltage >1000 V Rms to 50 Hz for one minute
 Insulation resistance >5000 M Ohms
 Contact resistance 20 mOhms max.
 CLIMATIC : Temperature range -55 °C up to 125°C
 MARKING : Amphenol...(Series No.)
 Commercial reference
 Manufacturing date

PRODUCT CODE

L 717 SD X XX P



| UNLESS OTHERWISE SPECIFIED TOLERANCES | | APPROVAL | DATE |
|---------------------------------------|--------|---------------------|-------------------------|
| .X | +/- | DRAWN | Christophe.cud 03/20/08 |
| .XX | +/- | CHECKED | Hk.wang 03/20/08 |
| .XXX | +/- | CHECKED | |
| FRACTIONS | +/- | | |
| ANGLES | +/- | | |
| FOR MATERIALS AND FINISHES SEE NOTES | | DRAWING FILE : | |
| REMOVE SHARP EDGES | | ANGLE OF PROJECTION | |
| DIMENSIONS | | | |
| U.S. | INCHES | | |
| METRIC | MM | | |

| | | |
|--|--------------|--------------|
| Amphenol® | | |
| TITLE | | |
| Stamped and Formed contacts, SD series | | |
| SIZE | DRAWING NO. | REV. |
| A4 | C L717SDXXXX | 1 |
| SCALE | NONE | SHEET 1 OF 1 |