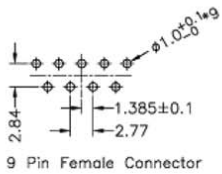
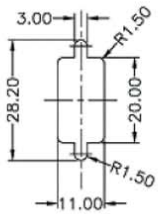
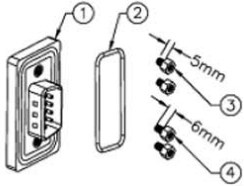
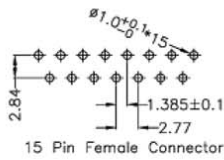
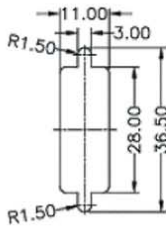
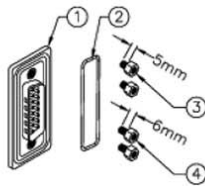


9 Contacts



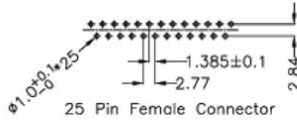
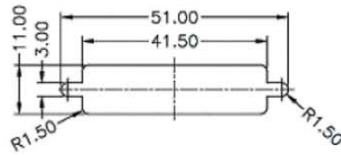
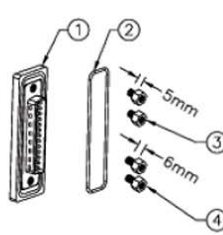
9 Pin Female Connector

15 Contacts

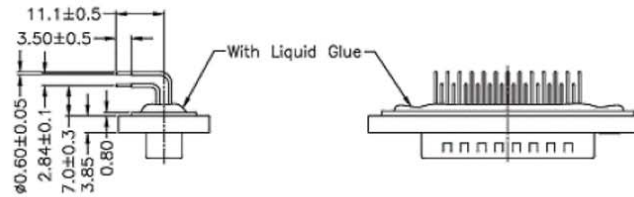


15 Pin Female Connector

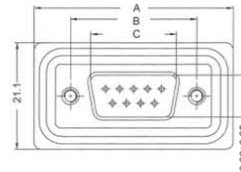
25 Contacts



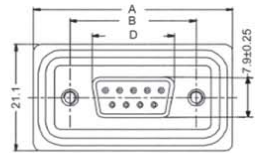
25 Pin Female Connector



Female



Male



Notes:

- Waterproof Rate: IP67
- Connector: Black, Nylon+GF
- Pin: Copper Alloy, Gold Plated
- Applicable Wire Range: 22AWG - 26AWG
- Insulators: PBT
- Current rating: 5A
- Dielectric voltage: 500V AC / 1 minute
- Insulation resistance: >500MΩ min.
- Operating temperature: -40°C to +105°C

Dimensions

No. of contacts	A	B	C	D
09	39.4	25.00	16.92	16.33
15	47.8	33.50	25.25	24.66
25	64.5	47.04	38.96	38.38

RoHS
Compliant

ITEM NO

A-DFXXAA-WP-R (FEMALE)
A-DSXXAA-WP-R (MALE)

TITLE

Waterproof D-Sub Connector, **Angled** for PCB Assembly

ASSMANN
Electronics, Inc.

1840 W. Drake Drive, Suite 101 - Tempe, AZ 85283

Toll Free: 1-877-277-6266 Email: info@usa-assmann.com

THIS DRAWING IS UNPUBLISHED
© Copyright 2008 by Assmann Electronic Components
All International Rights Reserved