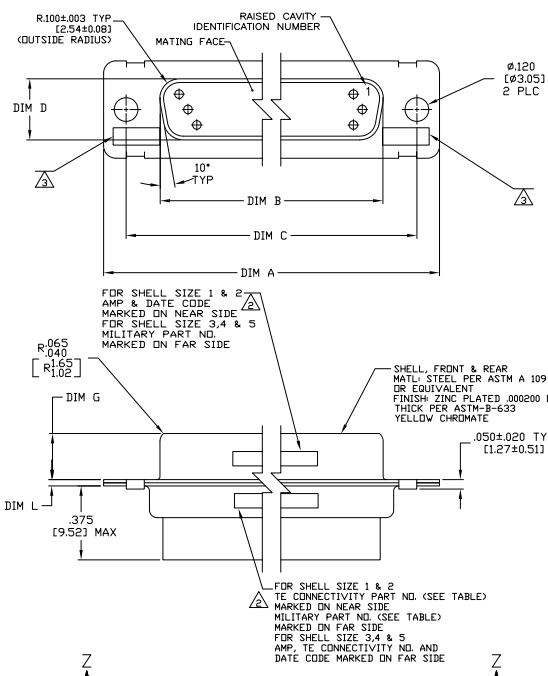
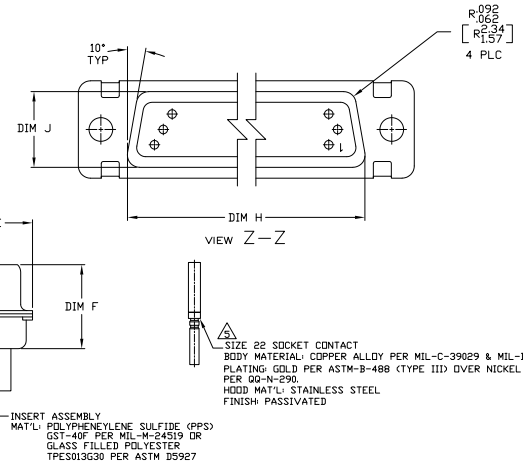


REV	DATE	DESCRIPTION	BY	APP
1	11MAR11	REVISED PER EDD-11-005030	CK	HMR



- THE CONNECTOR DESCRIBED IN THIS DOCUMENT WILL MATE WITH ANY PLUG CONNECTOR WITH THE SAME INSERT ARRANGEMENT.
- MARKED WITH .047-.062 [119-157] HIGH CHARACTERS. FAR SIDE REFERS TO THE WIDE SIDE OF THE KEYSTONE. NEAR SIDE REFERS TO THE NARROW SIDE OF THE KEYSTONE. WHEN SPACE IS LIMITED MARKING CAN BE SPLIT BETWEEN FRONT AND REAR SHELL.
- UL/CSA DESIGNATION STAMPED IN THIS AREA. (SIZE 1 THRU SIZE 5 ONLY).
- CONNECTOR ASSEMBLY WITHOUT CONTACTS, TE CONNECTIVITY P/N 204351-1. MUST BE ORDERED SEPARATELY.
- CONNECTOR ASSEMBLY SUPPLIED WITH CONTACTS, TE CONNECTIVITY P/N 204351-1. PACKAGED IN A SEPARATE CONTAINER. QTY = NO. OF POSN. (SEE TABLE).



REMARKS	MILITARY P/N ON PACKAGE	MILITARY P/N ON CONNECTOR	MARKED TE PART NUMBER	L	J	H	G	F	E	D	C	B	A	INSERT ARRANGEMENT	NO OF POS	SHELL SIZE	PART NUMBER
	M24308/2-16	M24308/2-16	1-1757824-2	.049 (1.24)	.666 (15.99)	2.912 (58.72)	2.48 (6.30)	.439 (11.15)	.683 (17.35)	.490 (12.45)	2.505 (63.63)	2.194 (55.73)	2.744 (69.70)	MS14004-1	104	6	1-1757824-2
	M24308/2-15	M24308/2-15	1-1757824-1	.049 (1.24)	.666 (15.99)	2.912 (58.72)	2.48 (6.30)	.439 (11.15)	.683 (17.35)	.490 (12.45)	2.505 (63.63)	2.194 (55.73)	2.744 (69.70)	MS18277-2	78	5	1-1757824-1
	M24308/2-14	M24308/2-14	1-1757824-0	.049 (1.24)	.666 (15.99)	2.912 (58.72)	2.48 (6.30)	.439 (11.15)	.683 (17.35)	.490 (12.45)	2.505 (63.63)	2.194 (55.73)	2.744 (69.70)	MS18276-2	62	4	1-1757824-0
	M24308/2-13	M24308/2-13	1757824-9	.049 (1.24)	.666 (15.99)	2.912 (58.72)	2.48 (6.30)	.439 (11.15)	.683 (17.35)	.490 (12.45)	2.505 (63.63)	2.194 (55.73)	2.744 (69.70)	MS18275-2	44	3	1757824-9
	M24308/2-12	M24308/2-12	1757824-8	.049 (1.24)	.666 (15.99)	2.912 (58.72)	2.48 (6.30)	.439 (11.15)	.683 (17.35)	.490 (12.45)	2.505 (63.63)	2.194 (55.73)	2.744 (69.70)	MS18274-2	26	2	1757824-8
	M24308/2-11	M24308/2-11	1757824-7	.049 (1.24)	.666 (15.99)	2.912 (58.72)	2.48 (6.30)	.439 (11.15)	.683 (17.35)	.490 (12.45)	2.505 (63.63)	2.194 (55.73)	2.744 (69.70)	MS18273-2	15	1	1757824-7
	M24308/2-291	M24308/2-16	1-1757824-2	.049 (1.24)	.666 (15.99)	2.912 (58.72)	2.48 (6.30)	.439 (11.15)	.683 (17.35)	.490 (12.45)	2.505 (63.63)	2.194 (55.73)	2.744 (69.70)	MS14004-1	104	6	1757824-6
	M24308/2-290	M24308/2-15	1-1757824-1	.049 (1.24)	.666 (15.99)	2.912 (58.72)	2.48 (6.30)	.439 (11.15)	.683 (17.35)	.490 (12.45)	2.505 (63.63)	2.194 (55.73)	2.744 (69.70)	MS18277-2	78	5	1757824-5
	M24308/2-289	M24308/2-14	1-1757824-0	.049 (1.24)	.666 (15.99)	2.912 (58.72)	2.48 (6.30)	.439 (11.15)	.683 (17.35)	.490 (12.45)	2.505 (63.63)	2.194 (55.73)	2.744 (69.70)	MS18276-2	62	4	1757824-4
	M24308/2-288	M24308/2-13	1757824-9	.049 (1.24)	.666 (15.99)	2.912 (58.72)	2.48 (6.30)	.439 (11.15)	.683 (17.35)	.490 (12.45)	2.505 (63.63)	2.194 (55.73)	2.744 (69.70)	MS18275-2	44	3	1757824-3
	M24308/2-287	M24308/2-12	1757824-8	.049 (1.24)	.666 (15.99)	2.912 (58.72)	2.48 (6.30)	.439 (11.15)	.683 (17.35)	.490 (12.45)	2.505 (63.63)	2.194 (55.73)	2.744 (69.70)	MS18274-2	26	2	1757824-2
	M24308/2-286	M24308/2-11	1757824-7	.049 (1.24)	.666 (15.99)	2.912 (58.72)	2.48 (6.30)	.439 (11.15)	.683 (17.35)	.490 (12.45)	2.505 (63.63)	2.194 (55.73)	2.744 (69.70)	MS18273-2	15	1	1757824-1

THIS DRAWING IS A CONTROLLED DOCUMENT. THE ORIGINAL IS IN THE MILLER OFFICE. THE MILLER OFFICE IS THE SOURCE OF ALL INFORMATION. THE MILLER OFFICE IS THE SOURCE OF ALL INFORMATION. THE MILLER OFFICE IS THE SOURCE OF ALL INFORMATION.

TE Connectivity
 AMPHIMITE RECEPTACLE ASSY, SIZE 1 THRU 6
 SERIES 90 WITH ZINC PLATED SHELLS

SIZE: 00779 (G=1757824)
 CUSTOMER DRAWING: 4.1