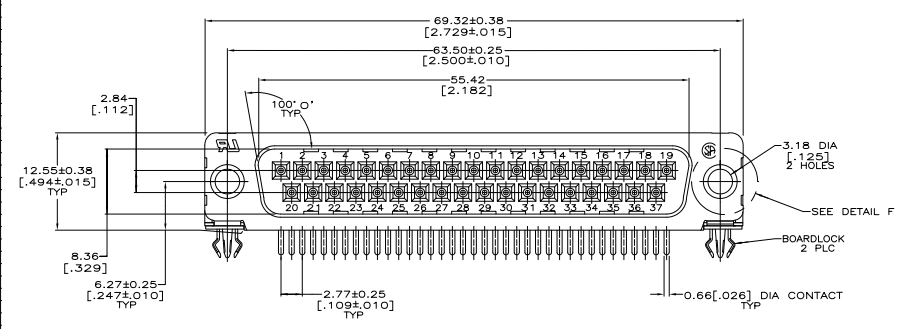
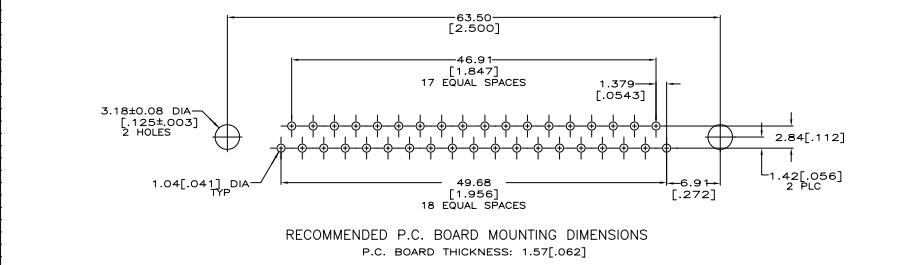
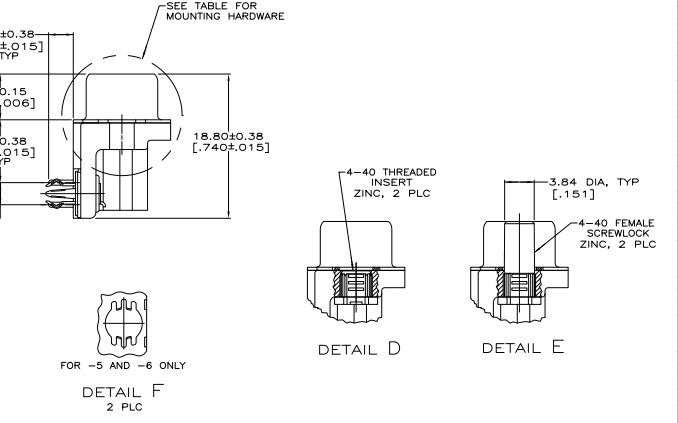
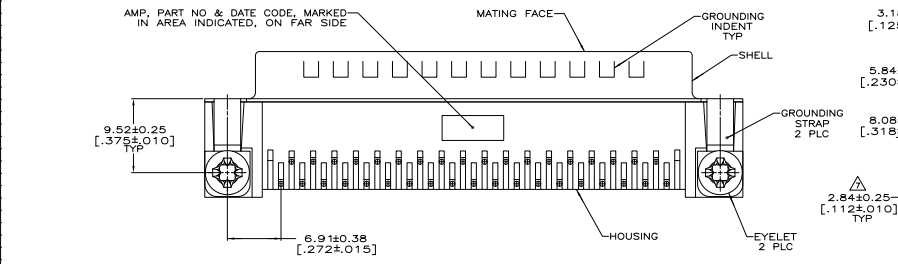


REV	DATE	DESCRIPTION	BY	APP
00				
S		REVISED FOR ECO-07-00077	13FB07	CJV/SB
ST		REVISED FOR ECO-10-00043	15M010	KK/AEG



- △ HOUSING: NYLON OR POLYESTER, FLAME RETARDANT 94V-0 RATED, GLASS FILLED, BLACK  
 SHELLS: CARBON STEEL  
 CONTACTS: BRASS  
 BOARDLOCKS: COPPER ALLOY  
 EYELETS: BRASS
- △ SHELLS: 2.54µm [0.00100] MIN TIN OVER 1.27µm [0.00050] MIN COPPER.  
 EYELETS: 5.08µm [0.000200] MIN TIN OVER COPPER FLASH.  
 CONTACTS AND BOARDLOCKS: SEE TABLE.  
 INSERTS AND BOARDLOCKS: CLEAR CHROMATE.
- △ GOLD PLATED FOR A LENGTH OF 3.81 [0.150] MIN FROM MATING END, GOLD FLASH IN MATED AREA, 2.54µm [0.000100] MIN TIN OR TIN-LEAD FOR A LENGTH OF 3.56 [0.140] MIN FROM OPPOSITE END, BOTH OVER 1.27µm [0.00050] MIN NICKEL.
- △ GOLD PLATED FOR A LENGTH OF 3.81 [0.150] MIN FROM MATING END, 0.76µm [0.00030] MIN GOLD IN MATED AREA, 2.54µm [0.000100] MIN TIN OR TIN-LEAD FOR A LENGTH OF 3.56 [0.140] MIN FROM OPPOSITE END, BOTH OVER 1.27µm [0.00050] MIN NICKEL.  
 -OR-  
 GOLD FLASH OVER PALLADIUM NICKEL PLATED FOR LENGTH OF 3.81 [0.150] MIN FROM MATING END, 0.76µm [0.00030] MIN PALLADIUM NICKEL IN MATED AREA, 2.54µm [0.000100] MIN TIN OR TIN-LEAD FOR A LENGTH OF 3.56 [0.140] MIN FROM OPPOSITE END, BOTH OVER 1.27µm [0.00050] MIN NICKEL.
- △ 5.08µm [0.000200] MIN TIN-LEAD OVER 1.27µm [0.00050] MIN NICKEL.
- △ 5.08µm [0.000200] MIN TIN OVER 1.27µm [0.00050] MIN NICKEL.
- △ DIMENSION APPLIES FROM CENTER OF CONTACTS.
- △ OBSOLETE PARTS: OBSOLETE CIS STREAMLINING PER D.RENAUD/D.SINISI



RECOMMENDED P.C. BOARD MOUNTING DIMENSIONS  
 P.C. BOARD THICKNESS: 1.57[0.062]

REVISION	DESCRIPTION	DATE	BY	APP	PART NUMBER
△ OBSOLETE	SEE DETAIL E				6-747843-9
△ OBSOLETE	SEE DETAIL D				6-747843-8
					6-747843-7
					747843-6
△ OBSOLETE	SEE DETAIL E				747843-5
					747843-4
SUPERCEDED BY 5747843-3	SEE DETAIL D				747843-3
△ OBSOLETE					747843-2
△ OBSOLETE					747843-1

DESCRIPTION	REV	DATE	BY	APP
THIS DRAWING IS A CONTROLLED DOCUMENT.				
ENGINEER	108-40025			
DRAWN	114-40010			
CHECKED				
APPROVED				

DESCRIPTION	REV	DATE	BY	APP
RIGHT ANGLE FRONT METAL SHELL, 318 SERIES, BOARDLOCKS, AMP/LITE # HD-20				
CUSTOMER DRAWING				