

4

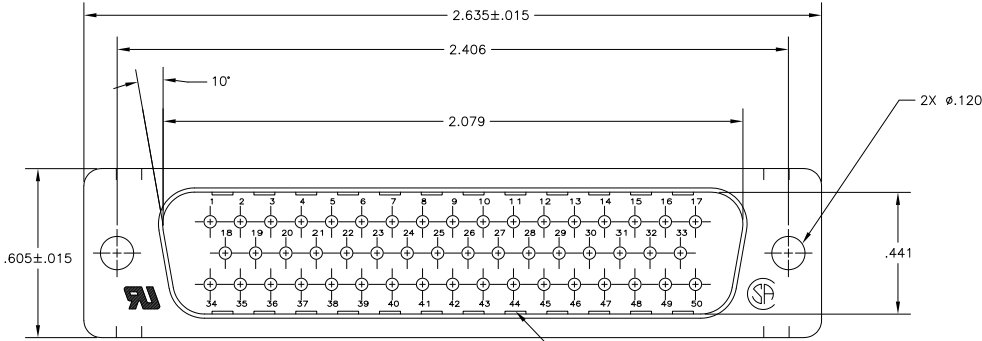
3

2

1

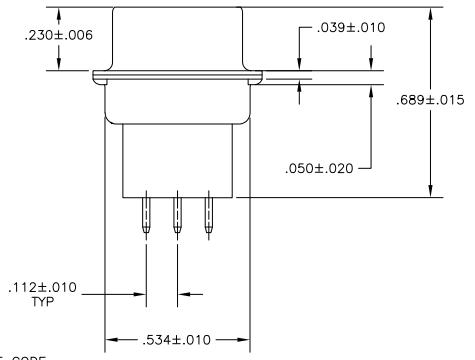
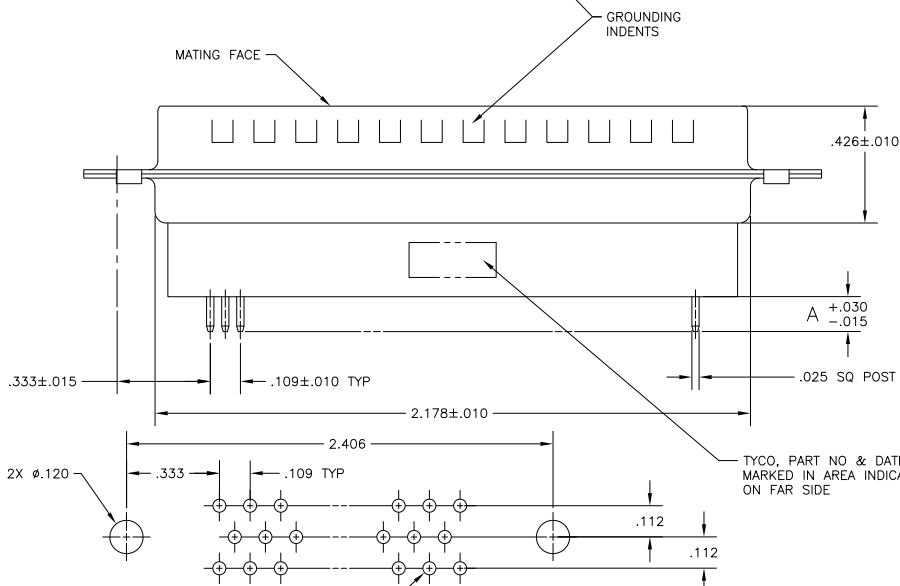
THIS DRAWING IS UNPUBLISHED. RELEASED FOR PUBLICATION
 © COPYRIGHT BY TYCO ELECTRONICS CORPORATION. ALL RIGHTS RESERVED.

LOC	DIST	REVISIONS					
GP	00	P	LTR	DESCRIPTION	DATE	MIN	APPD
		C		REVISED PER ECO-10-000073	5FEB2010	CJV	SB



⚠ MOLDED PART: FLAME RETARDANT, UL 94V-0 RATED, THERMOPLASTIC; COLOR: BLACK.
 SHELLS: CARBON STEEL
 CONTACTS: BRASS

⚠ SHELLS: .000200 MIN TIN OVER .000100 MIN COPPER.
 CONTACTS: GOLD PLATING FOR A LENGTH OF .150 MIN FROM MATING END, .000030 MIN GOLD IN MATED AREA, .000100 MIN TIN ON SOLDER END, BOTH OVER .000050 MIN NICKEL.
 -OR-
 GOLD FLASH OVER PALLADIUM-NICKEL PLATED FOR A LENGTH OF .150 MIN FROM MATING END, .000030 MIN TOTAL IN MATED AREA, .000100 MIN TIN ON SOLDER END, BOTH OVER .000050 MIN NICKEL.



P.C. BOARD MOUNTING DIMENSIONS

TYCO, PART NO & DATE CODE, MARKED IN AREA INDICATED ON FAR SIDE

2X Ø.120

50X Ø.047

.188	5745414-7
.125	5745414-1
A	PART NO

THIS DRAWING IS A CONTROLLED DOCUMENT.

DR: S. LATTUCA	16SEP05	Tyco Electronics Corporation Harrisburg, PA 17105-3608
CHK: S. BOLASH	16SEP05	
APP: M. WALMSLEY	16SEP05	NAME
PRODUCT SPEC:	108-40025	PLUG ASSEMBLY, SIZE 5, 50 POSN, VERTICAL, .025 SQ. POSTS, GROUNDING INDENTS, AMPLIMITE HDP
APPLICATION SPEC:	114-40013	SIZE ONE CODE (DRAWING NO)
WEIGHT:	-	A2 00779 C=5745414
MATERIAL:	FINISH:	CUSTOMER DRAWING

SCALE: NTS SHEET 1 of 1 REV C

COPYRIGHT 2005
 TYCO ELECTRONICS CORP
 ALL RIGHTS RESERVED

AMP 1471-9 REV 31MM2000

5745414

A