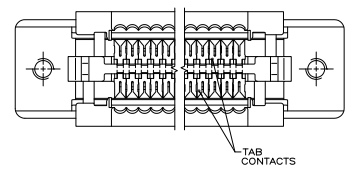
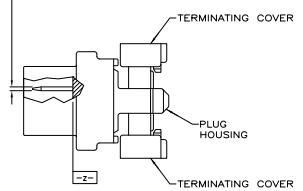
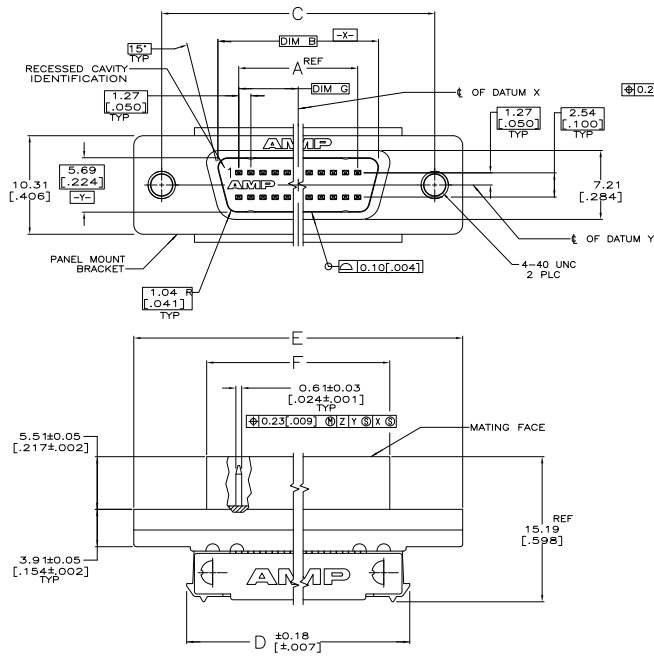


THIS DRAWING IS UNPUBLISHED. RELEASED FOR PURCHASERS. ALL RIGHTS RESERVED.

REV	DATE	DESCRIPTION	BY	APP'D
GP 00		REVISED PER ECO-11-001216		



- MATERIAL—
TAB CONTACTS: PHOSPHOR BRONZE.
PANEL MOUNT BRACKET: ZINC.
PLUG HOUSING AND TERMINATION COVERS: UL V-0 RATED THERMOPLASTIC, COLOR: BLACK.
- FINISH—
TAB CONTACTS: EITHER 0.76µm [0.00030] MINIMUM GOLD PLATE OR GOLD FLASH OVER PALLADIUM NICKEL PLATE, 0.76µm [0.00030] MIN TOTAL IN CONTACT AREA, 1.27µm [0.00050] MINIMUM BRIGHT TIN-LEAD PLATE IN TERMINATION AREA, ALL OVER 1.27µm [0.00050] MINIMUM NICKEL UNDERPLATE.
PANEL MOUNT BRACKET: 5.08µm [0.00020] MINIMUM NICKEL PLATE OVER 7.62µm [0.00030] MINIMUM COPPER PLATE.
- RECOMMENDED WIRE:
28 AWG OR 30 AWG, SOLID OR 7 STRANDED, PVC INSULATION WITH A 0.74-0.91 [0.029-0.036] INSULATION DIA.
- FINISH—
TAB CONTACTS: EITHER 0.76µm [0.00030] MINIMUM GOLD PLATE OR GOLD FLASH OVER PALLADIUM NICKEL PLATE, 0.76µm [0.00030] MINIMUM TOTAL IN CONTACT AREA, 1.27µm [0.00050] MINIMUM MATTE TIN PLATE IN TERMINATION AREA, ALL OVER 1.27µm [0.00050] MINIMUM NICKEL UNDERPLATE.
PANEL MOUNT BRACKET: 5.08µm [0.00020] MINIMUM NICKEL PLATE OVER 7.62µm [0.00030] MINIMUM COPPER PLATE.
- ROHS 2002/95/EC COMPLIANT

FINISH	G	F	E	D	C	B	A	NO OF POSN	PART NUMBER
△	31.12	68.94	84.20	73.13	78.23	66.60	62.23	100	5-749879-9
△	1.225	2.714	3.315	2.879	3.080	2.622	2.450	50	5-749879-5
△	15.24	37.19	52.45	41.38	46.48	34.85	30.48	100	749879-9
△	31.12	68.94	84.20	73.13	78.23	66.60	62.23	50	749879-5
△	1.225	2.714	3.315	2.879	3.080	2.622	2.450	50	749879-5
△	15.24	37.19	52.45	41.38	46.48	34.85	30.48	50	749879-5

THIS DRAWING IS A CONTROLLED DOCUMENT.		BY: MCCAFFREY	REVISED	DATE
DRAWING: 114-40029		BY: BERGICHADO	DATE	108-1228
DESIGNED BY: M (REV)	CHECKED BY: M	APPROVED BY: M	DATE	114-40029
DRAWN BY: M	CHECKED BY: M	APPROVED BY: M	DATE	114-40029
DATE:	REVISED:	BY:	DATE:	114-40029
SEE TABLE		CUSTOMER DRAWING.		

AP 485 80 3/18/2003