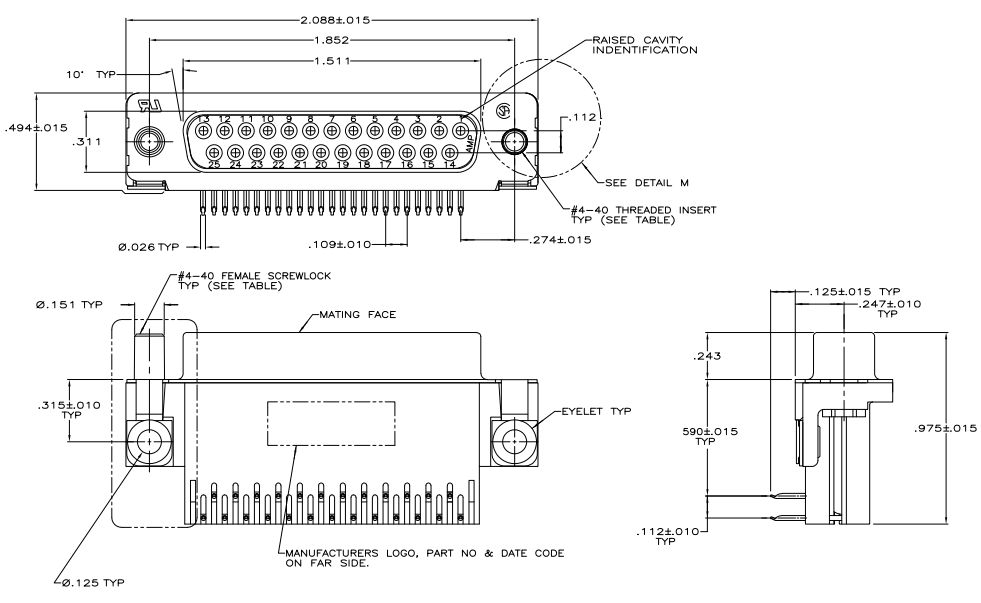
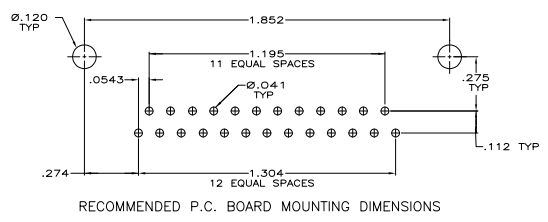


REV	DATE	DESCRIPTION	BY	CHK	APP
00					
0		RELEASED PER EC 0513-0016-05	04-11-05	AF	JG



- ⚠ MOLDDED PARTS: FLAME RETARDANT 94V-0 RATED THERMOPLASTIC, BLACK.
SHELL: CARBON STEEL
CONTACTS: PHOSPHOR BRONZE
EYELETS: BRASS
SCREWLOCKS: ZINC
INSERTS: ZINC
- ⚠ SHELL: .000100 MIN TIN OVER .000050 MIN COPPER.
CONTACTS: SEE TABLE
EYELETS: .000100 MIN TIN OVER COPPER FLASH.
SCREWLOCKS: CLEAR CHROMATE
INSERTS: CLEAR CHROMATE
- ⚠ GOLD FLASH FOR A DISTANCE OF .100 MIN FROM MATING END, .000100 MIN TIN ON SOLDER POST, ALL OVER .000050 MIN NICKEL.
- ⚠ .000030 MIN GOLD FOR A DISTANCE OF .100 MIN FROM MATING END, .000100 MIN TIN ON SOLDER POST, ALL OVER .000050 MIN NICKEL.



COPYRIGHT 2005
TYCO ELECTRONICS CORP
ALL RIGHTS RESERVED

FEMALE SCREWLOCKS		CONTACT FINISH		PART NUMBER	
THREADED INSERTS		CONTACT FINISH		5745992-6	
MOUNTING HARDWARE		CONTACT FINISH		5745992-3	
THIS DRAWING IS A CONTROLLED DOCUMENT. Tyco Electronics Corporation, Harrisburg, PA 17105-3608					
DESIGNER	DATE	REVISED BY	DATE	REVISED BY	DATE
W. WILMSLEY	04-11-05	W. WILMSLEY	04-11-05		
108-40025		108-40025			
114-40010		114-40010			
CUSTOMER DRAWING			A100779 (Q)=5745992		