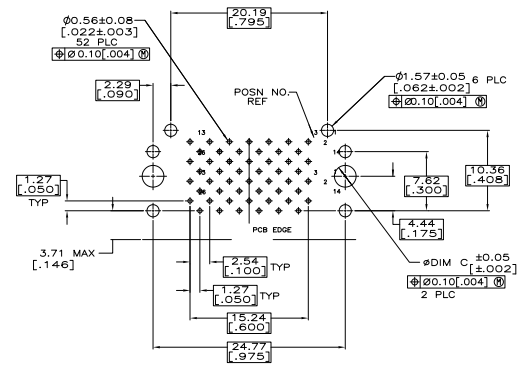
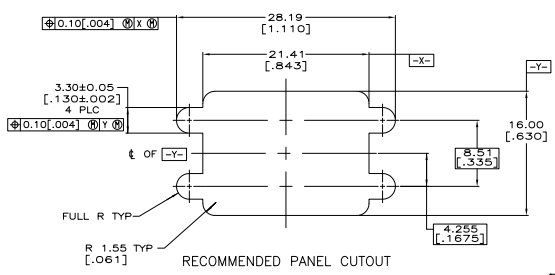
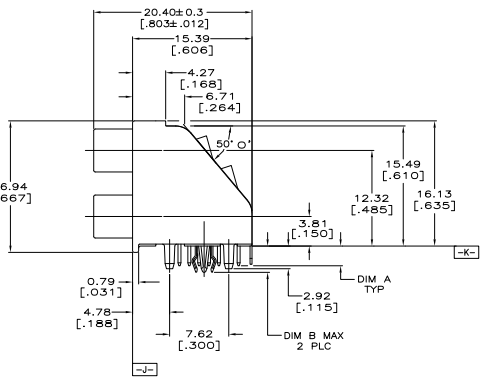
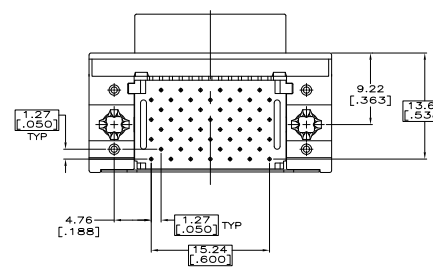
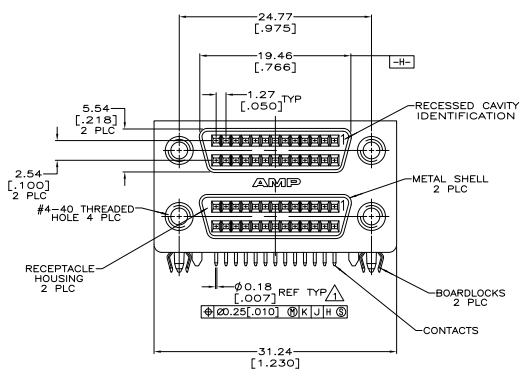
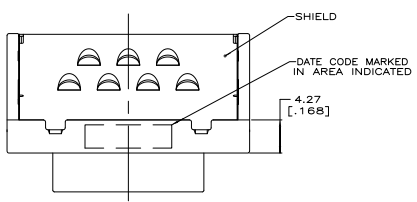


REV	DATE	DESCRIPTION	BY	CHK	APP
00					
01		REVISED PER EDD-10-013809			



P.C. BOARD MOUNTING DIMENSIONS
CONNECTOR SIDE
PC BOARD THICKNESS = DIM D ±.008

- △ POSITION TOLERANCE APPLIES AT TIP ONLY.
- △ MATERIAL: RECEPTACLE HOUSING: UL 94V-0 RATED LCP, COLOR BLACK. CONTACTS: PHOSPHOR BRONZE. BRACKET: ZINC. METAL SHELL: CARBON STEEL. BOARDLOCKS: COPPER ALLOY. SHIELD: PHOSPHOR BRONZE.
- △ FINISH: CONTACTS: GOLD FLASH OVER PALLADIUM-NICKEL PLATE, 0.00076 [0.00030] MIN TOTAL ON MATING SURFACES, 0.0038 [0.00150] MIN TIN PLATE ON SOLDER-TAILS, 0.0127 [0.00050] MIN NICKEL UNDERPLATE ON ENTIRE CONTACT. -OR- 0.00076 [0.00030] MIN GOLD PLATE ON MATING SURFACES, 0.0038 [0.00150] MIN TIN PLATE ON SOLDER-TAILS, 0.0127 [0.00050] MIN NICKEL UNDERPLATE ON ENTIRE CONTACT.
- BRACKET: 0.00508-0.01016 [0.00200-0.00400] TIN OVER 0.00508-0.00762 [0.00200-0.00300] COPPER.
- METAL SHELL: 0.00508-0.01016 [0.00200-0.00400] TIN OVER 0.00127-0.00254 [0.00050-0.00100] COPPER.
- BOARDLOCKS: 0.00508-0.01016 [0.00200-0.00400] TIN OVER 0.00127-0.00254 [0.00050-0.00100] NICKEL.
- SHIELD: 0.00254-0.00635 [0.00100-0.00250] TIN.

DIM D	DIM C	DIM B	DIM A	PART NUMBER
2.36 [1.093]	3.18 [1.25]	4.52 [1.78]	3.30 [1.30]	5750820-2
1.57 [0.62]	2.77 [1.09]	3.81 [1.50]	2.54 [1.00]	5750820-1

THIS DRAWING IS A CONTROLLED DOCUMENT.

DATE: 108-1366
REVISED PER: 114-40036
CUSTOMER DRAWING: [X]

REVISIONS: 108-1366
REVISED PER: 114-40036
CUSTOMER DRAWING: [X]

RECEPTACLE ASSEMBLY, SHIELDED, 52 POSN STACKED RIGHT ANGLE, AMPHENOL 500 Series SIGNALING

DATE: 4.1 REV: 1 OF 1

COPYRIGHT 2005 TYCO ELECTRONICS CORP ALL RIGHTS RESERVED