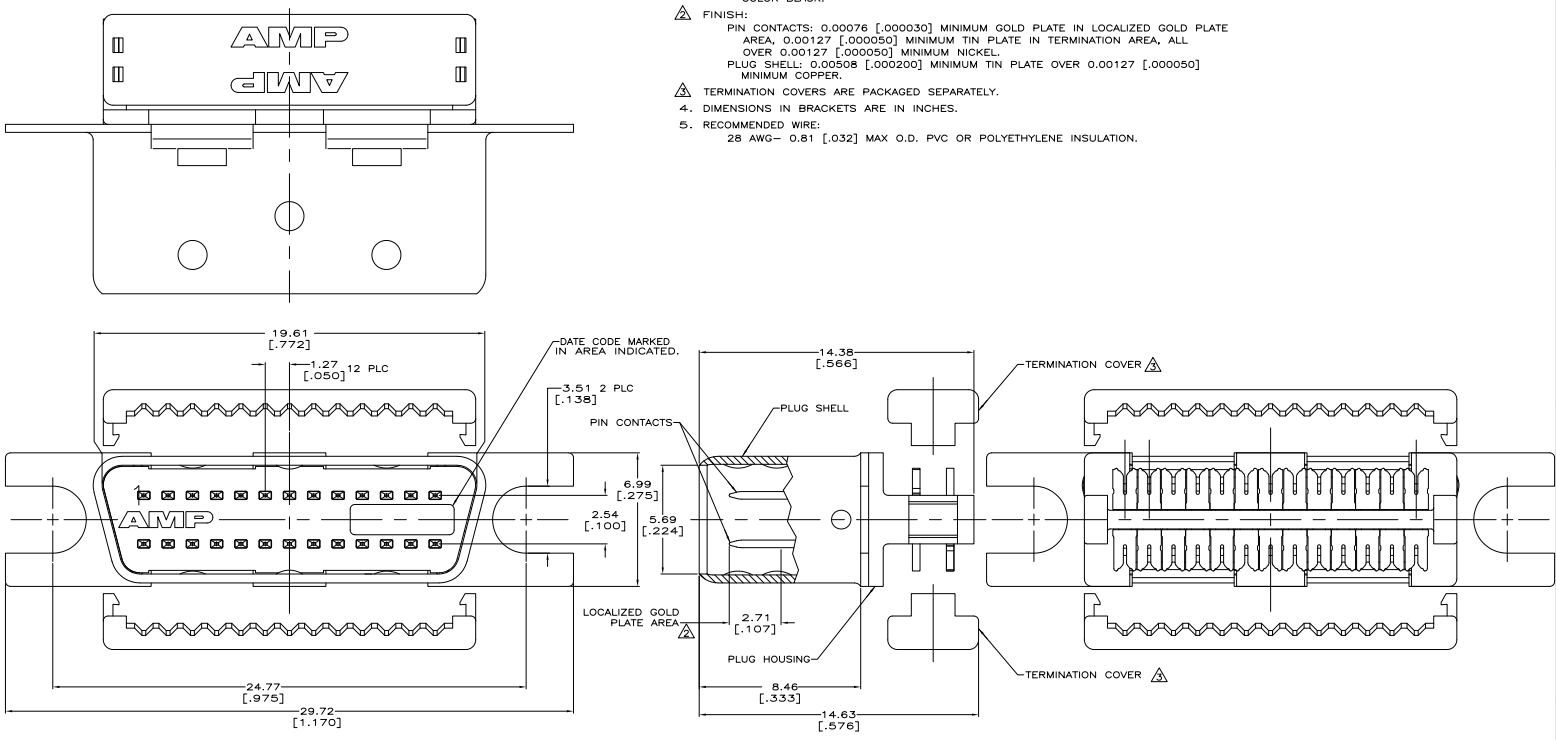


THIS DRAWING IS UNAPPROVED FOR PRODUCTION
 ALL WORK REQUIRED

REVISIONS			
REV	DATE	DESCRIPTION	BY
GP	00	REVISED PER ECO-11-004833	11MM/11 RK HMR

- MATERIAL:**
 PIN CONTACTS: PHOSPHOR BRONZE.
 PLUG SHELL: STEEL.
 PLUG HOUSING AND TERMINATION COVERS: UL V-0 RATED POLYESTER THERMOPLASTIC, COLOR BLACK.
- FINISH:**
 PIN CONTACTS: 0.00076 [.000030] MINIMUM GOLD PLATE IN LOCALIZED GOLD PLATE AREA, 0.00127 [.000050] MINIMUM TIN PLATE IN TERMINATION AREA, ALL OVER 0.00127 [.000050] MINIMUM NICKEL.
 PLUG SHELL: 0.00508 [.000200] MINIMUM TIN PLATE OVER 0.00127 [.000050] MINIMUM COPPER.
- TERMINATION COVERS ARE PACKAGED SEPARATELY.**
- 4. DIMENSIONS IN BRACKETS ARE IN INCHES.**
- 5. RECOMMENDED WIRE:**
 28 AWG- 0.81 [.032] MAX O.D. PVC OR POLYETHYLENE INSULATION.



**COPYRIGHT 2005
 TE CONNECTIVITY CORP
 ALL RIGHTS RESERVED**

THIS DRAWING IS A CONTROLLED DOCUMENT.		REV. 00	DATE 02-20-09	BY 11MM/11
DRAWING NO. 5750833-1		REV. 00	DATE 02-20-09	BY 11MM/11
PART NO. 5750833-1		TE Connectivity		
DESCRIPTION: PLUG KIT, CABLE CONNECTOR, 28 POSITION, SHIMLINE, AMP/TIME .000 Series		REVISED PER ECO-11-004833		
DRAWN BY: A100779		CHECKED BY: HMR		
DATE: 02-20-09		SCALE: 1:1		
SHEET: 1		TOTAL SHEETS: 1		