

4

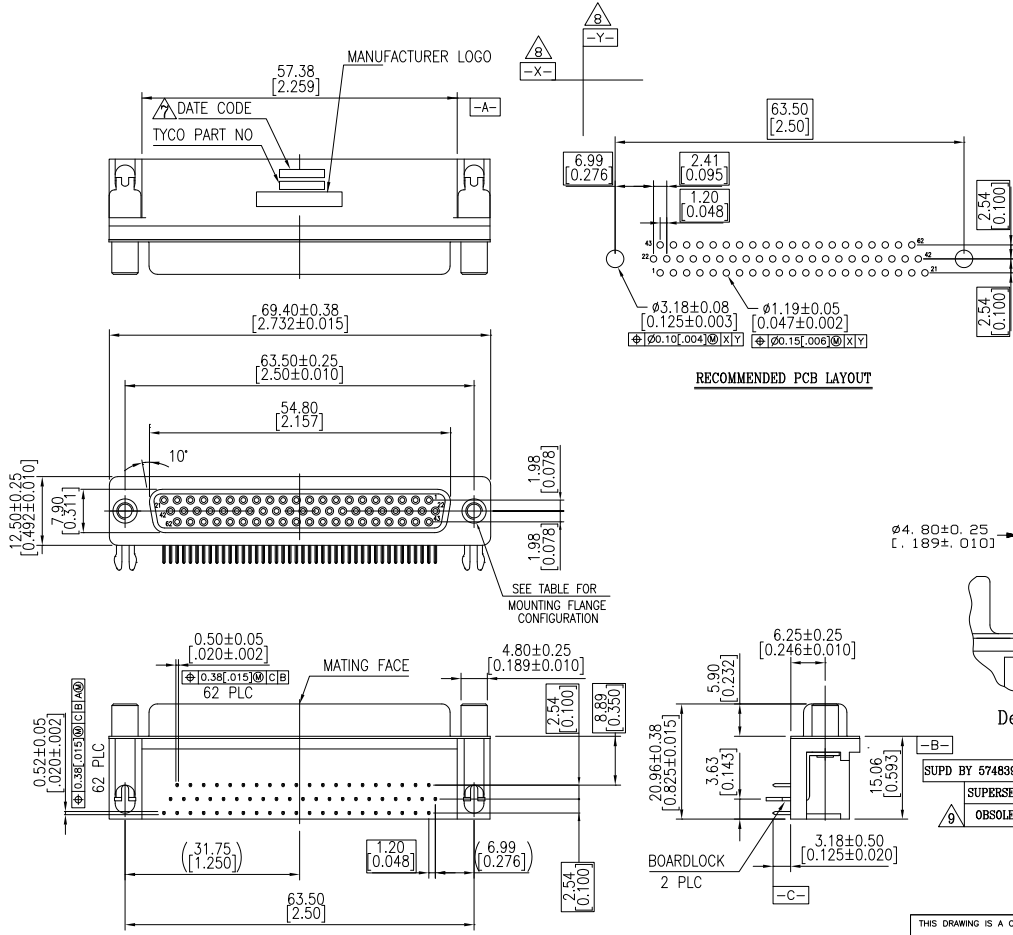
3

2

1

THIS DRAWING IS UNPUBLISHED. RELEASED FOR PUBLICATION
 © COPYRIGHT BY TYCO ELECTRONICS CORPORATION. ALL RIGHTS RESERVED.

| LOC | DIST | REVISIONS | | | | | |
|-----|------|-----------|----|---------------------------|-----------|-----|-------|
| GP | 00 | F | LR | DESCRIPTION | DATE | BY | APP'D |
| | | B | | REVISED PER ECO-09-005756 | 15APR2009 | ZMR | SLB |
| | | B1 | | REVISED PER ECO-10-000444 | 20JAN10 | KK | HMR |



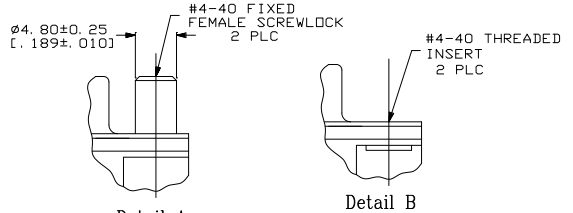
- HOUSING MATERIAL: PBT, GLASS FILLED, BLACK, UL 94V-0 RATED.
- CONTACT MATERIAL: PHOSPHOR BRONZE.
- CONTACT FINISH: GOLD PLATE IN MATING AREA (SEE TABLE), 120µ" MIN TIN PLATE ON SOLDER TAIL, BOTH OVER 50µ" MIN NICKEL UNDERPLATE.
- SHELL: STEEL, NICKEL PLATE.
- BOARDLOCK: BRASS, 100µ" MIN TIN PLATE.
- FEMALE SCREWLOCKS/ THREADED INSERTS: BRASS, NICKEL PLATE.

△ FOUR DIGIT DATE CODE IN THIS FORMAT.

Year 01 Manufacturing Week 45

△ DATUMS -X- & -Y- TO BE ESTABLISHED BY CUSTOMER.

△ OBSOLETE PARTS: OBSOLETE CIS STREAMLINING PER D.RENAUD/D.SINISI



| Part | Configuration | Finish | AMP Part No. |
|------|---------------|------------|--------------|
| Tray | Detail A | Gold flash | 2-5748394-6 |
| Tray | Detail A | 15µ" MIN | 2-5748394-5 |
| Tray | Detail B | Gold flash | 2-5748394-4 |
| Tray | Detail B | 15µ" MIN | 2-5748394-3 |
| Tray | Detail A | 30µ" MIN | 5748394-6 |
| Tray | Detail B | 30µ" MIN | 5748394-5 |

| | | | | | |
|--|---------|----------------------------------|-------------|---------|---|
| THIS DRAWING IS A CONTROLLED DOCUMENT. | | DRM | B. MCMASTER | 21SEP05 | Tyco Electronics Corporation Harrisburg, PA 17105-3608 |
| DIMENSIONS: mm [INCHES] | | CHK | S. BOLASH | 21SEP05 | |
| TOLERANCES UNLESS OTHERWISE SPECIFIED: | | APP'D | M. WALMSLEY | 21SEP05 | NAME |
| 0 PLC | ± .005 | APPLICATION SPEC: - | | | |
| 1 PLC | ± .030 | SIZE: A2 | | | |
| 2 PLC | ± .030 | ONE CODE: C=5748394 | | | |
| 3 PLC | ± .010 | DRAWING NO: - | | | |
| 4 PLC | ± .010 | RESTRICTED TO: - | | | |
| ANGLES | ± .5° | CUSTOMER DRAWING | | | |
| MATERIAL: | FINISH: | SCALE: 2:1 SHEET: 1 of 1 REV: B1 | | | |

5748394-6, 2--5, & 2--6, SHOWN

AMP 1471-9 REV 31MAR2000