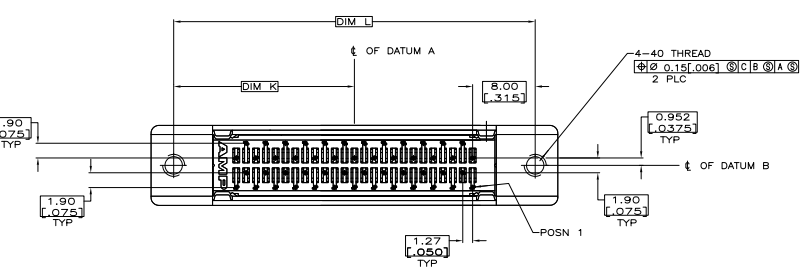
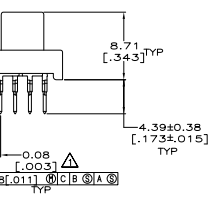
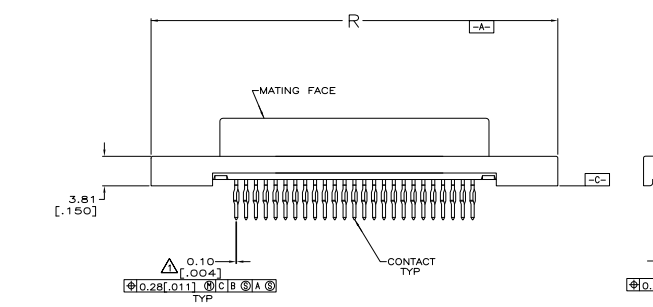
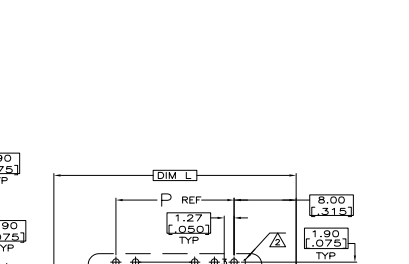
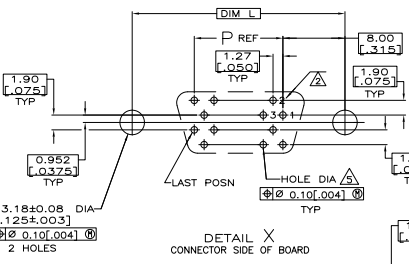
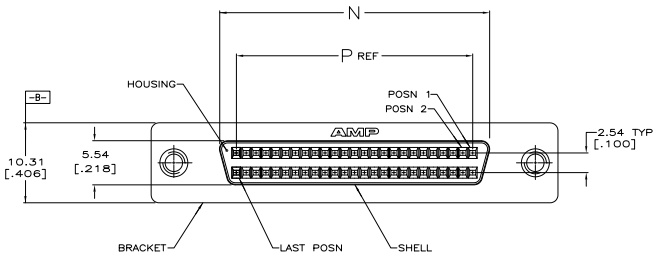


REV	DATE	DESCRIPTION	BY	CHK
00				
01		REVISED PER ECO-08-018735		



- △ POSITION TOLERANCE APPLIES AT CONTACT TIP.
- △ POSITION NUMBERS SHOWN FOR REFERENCE ONLY.
- △ MATERIAL:
 HOUSING - POLYPHTHALAMIDE, BLACK, UL 94-V0 RATED.
 SHELL - CARBON STEEL PER ASTM A109.
 CONTACTS - PHOSPHOR BRONZE PER QQ-B-750.
 BRACKET - ZINC.
- △ FINISH:
 SHELL - 5.08µm [0.00200] MIN NICKEL OVER 1.27µm [0.00050] MIN COPPER.
 BRACKET - 3.81µm [0.00150] MIN NICKEL OVER 5.08µm [0.00200] MIN COPPER.
 CONTACTS - EITHER 0.76µm [0.00030] MIN GOLD PLATE OR GOLD FLASH OVER PALLADIUM NICKEL PLATE, 0.76µm [0.00030] MIN TOTAL, FOR A LENGTH OF 0.64 [0.25] MIN, 0.13 [0.05] MAX FROM MATING END, 1.27µm [0.00050] MIN TIN-LEAD ON OPPOSITE END FOR A LENGTH OF 4.78 [1.88] MIN, BOTH OVER 1.27µm [0.00050] MIN NICKEL.
- △ PC BOARD HOLE RECOMMENDATIONS:
 A. HOLES SHOULD BE DRILLED WITH A 0.701 [0.276] DRILL.
 B. PC BOARD PLATING TO BE 7.62µm [0.00300] MIN TIN-LEAD OVER 0.025-0.038 [0.010-0.015] COPPER.
 C. RECOMMENDED HOLE SIZE AFTER TIN-LEAD PLATING IS 0.56-0.66 [0.22-0.26].
- △ OBSOLETE PART NUMBER.

PER DETAIL X	96.90 [3.815]	74.93 [2.950]	79.15 [3.116]	90.93 [3.580]	45.47 [1.790]	120	△ 1-786555-0
PER DETAIL X	84.20 [3.315]	62.23 [2.450]	66.45 [2.616]	78.23 [3.080]	39.12 [1.540]	100	786555-9
PER DETAIL X	63.88 [2.515]	41.91 [1.650]	46.13 [1.816]	57.91 [2.280]	28.96 [1.140]	68	786555-7
PER DETAIL Y	52.45 [2.065]	30.48 [1.200]	34.70 [1.366]	46.48 [1.830]	23.24 [0.915]	50	786555-5
PER DETAIL Y	37.21 [1.465]	15.24 [0.600]	19.46 [0.766]	31.24 [1.230]	15.62 [0.615]	26	786555-2
PER DETAIL X	33.40 [1.315]	11.43 [0.450]	15.65 [0.616]	27.43 [1.080]	13.72 [0.540]	20	△ 786555-1
RECOMMENDED PCB MTG DIMENSIONS	R	P	N	L	K	NO OF POSN	PART NO

THIS DRAWING IS A CONTROLLED DOCUMENT. TYS ELECTRONICS CORPORATION, HARRISBURG, PA 17105-3608. DRAWING NO: 108-1228. CUSTOMER DRAWING: 00779C-786555. DATE: 11-14-0029. REVISIONS: 1.0. PART: RECEPTACLE ASSEMBLY, SHIELDED, VERTICAL, FLAT TOP, ACTION PIN FOR 062 TO 093 THICK BO.