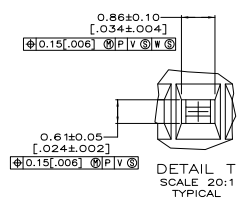
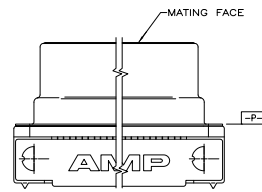
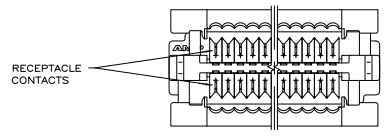
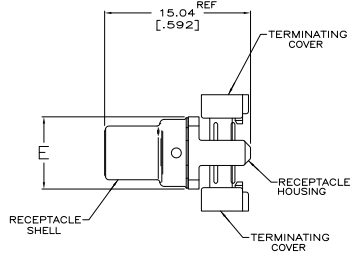
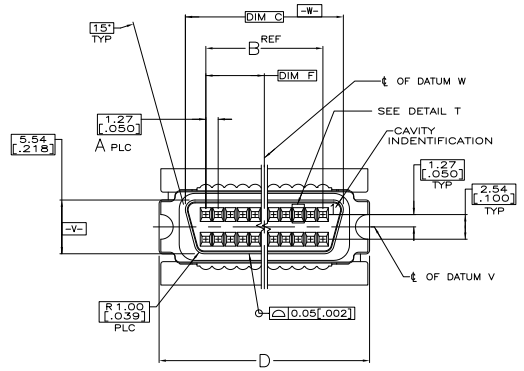


THIS DRAWING IS UNPUBLISHED. REVISIONS FOR MODIFICATION. ALL RIGHTS RESERVED.

REV	DATE	DESCRIPTION	BY	APP'D
00				
C		REVISED PER ECO-11-001216		



- △ MATERIAL:  
 RECEPTACLE CONTACTS - PHOSPHOR BRONZE  
 RECEPTACLE SHELL - STEEL  
 RECEPTACLE HOUSING AND TERMINATING COVERS - UL V-0 RATED THERMOPLASTIC, COLOR: BLACK.
- △ PLATING:  
 RECEPTACLE CONTACTS - EITHER 0.76µm [.000030] MINIMUM GOLD PLATE OR GOLD FLASH OVER PALLADIUM NICKEL PLATE 0.76µm [.000030] MIN TOTAL IN CONTACT AREA, 1.27µm [.000050] MINIMUM BRIGHT TIN PLATE IN TERMINATION AREA, ALL OVER 1.27µm [.000050] MINIMUM NICKEL.  
 RECEPTACLE SHELL - 5.08µm [.000200] MINIMUM BRIGHT TIN PLATE OVER 1.27µm [.000050] MINIMUM COPPER.
3. RECOMMENDED WIRE: 28 AWG OR 30 AWG, SOLID OR 7 STRANDED, PVC INSULATION, WITH A 0.74-0.91 [.029-.036] INSULATION DIA.

**COPYRIGHT 2005  
 TYCO ELECTRONICS CORP  
 ALL RIGHTS RESERVED**

20.96 [.825]	7.44 [.293]	51.54 [2.029]	46.13 [1.816]	41.91 [1.650]	33	68	5749210-7
15.24 [.600]	7.44 [.293]	40.11 [1.579]	34.70 [1.366]	30.48 [1.200]	24	50	5749210-5
F	E	D	C	B	A	NO OF POSH	PART NO

THIS DRAWING IS A CONTROLLED DOCUMENT. DATE: 02-23-04 BY: M. CHILEY (02-23-04) CHECKED BY: M. WILKINSON (02-23-04) DRAWN BY: M. WILKINSON (02-23-04)

UNLESS SPECIFIED, DIMENSIONS ARE IN INCHES. UNLESS SPECIFIED, DIMENSIONS ARE IN MILLIMETERS.

108-1228  
 114-40029  
 1000 SERIES, AMP/LITE

RECEPTACLE ASSEMBLY, CABLE CONNECTOR, 1000 SERIES, AMP/LITE

DATE: 02-23-04 DRAWN BY: M. WILKINSON (02-23-04) CHECKED BY: M. WILKINSON (02-23-04) APPROVED BY: M. WILKINSON (02-23-04)

CUSTOMER DRAWING